

Enhancing the spectral response of filled bolometer arrays for submillimeter astronomy

Vincent Revéret,^{1,*} Louis Rodriguez,¹ and Patrick Agnès²

¹*Laboratoire AIM Paris-Saclay, CNRS/INSU CEA/Irfu Université Paris-Diderot,
F-91191 Gif-sur-Yvette, France*

²*CEA Grenoble, LETI/SLIR, MINATEC, 17 rue des Martyrs, 38054 Grenoble,
France*

**Corresponding author: vincent.reveret@cea.fr*

The future missions for astrophysical studies in the submillimeter region will need detectors with very high sensitivity and large field of view. Bolometer arrays can fulfill these requirements over a very broad band. We describe a technique that enables bolometer arrays that use quarter wave cavities to have a high spectral response over most of the submillimeter band. This technique is based on the addition on the front of the array of an anti-reflecting dielectric layer. The optimum parameters (layer thickness and distance to the array) are determined by a 2D analytic code. This general principle is applied to the case of the Herschel PACS bolometers (optimized for the 60 μm - 210 μm band). As an example, we demonstrate experimentally that a PACS array covered by a 138 μm thick silicon layer can improve the spectral response by a factor 1.7 in the 450 μm band.

© 2010 Optical Society of America

OCIS codes: 040.0040, 040.1240, 040.2235, 350.1270.

1. Introduction

The recently launched Herschel Space Observatory has provided astronomers with a spectacular and promising glimpse of the submillimeter universe [1]. For the next generation submillimeter instruments operating from space [2] or from ground-based facilities [3,4], the improvement of performance generally implies to have better detector sensitivities and larger fields of view. Another important point is the ability to

fully cover the region between far-infrared and millimeter (typically between $50\ \mu\text{m}$ and $2\ \text{mm}$). This means that the spectral response of the detector has to be optimum in the considered spectral window.

Bolometers are the detectors of choice for direct detection in this part of the spectrum. To get a high absorption efficiency, modern bolometer arrays generally use quarter wave cavities to absorb the incoming radiation from the telescope. They are therefore restricted, by design, to work in a specific spectral window. It is not a straightforward process to modify the spectral range of operation of this type of detectors once assembled, because their cavities are usually made by spacers, etched materials or mechanical handling systems. However, when groups provide detectors to a project, many models are produced and only the ones with the perfectly matching parameters are selected for the mission. But some non-selected detectors can potentially give good performances in other bands, if their spectral response is enhanced. We have studied a technical solution which is simple, fast to assemble and not expensive, that enables a detector originally designed for a single band to work in other spectral windows. The solution is based on an anti-reflecting (AR) layer whose optimum parameters are obtained by modeling.

This paper first describes the model used to obtain the spectral response: a 2D analytic method which is fast, easy to implement and more flexible than heavy 3D electromagnetic software. Then the method is applied to the particular case of Herschel PACS bolometers. Our group has developed these semiconductor sensors for

the PACS photometer [5, 6]. These bolometers are optimized for the 60 μm - 210 μm band, but their spectral response decreases toward longer wavelengths (see next section). With the new method described in the paper, we have found that simple configurations with AR layers enable the PACS detectors to operate at longer wavelengths (bands beyond 300 μm). We focused our development on the 450 μm atmospheric window which is accessible from ground-based telescopes and which is of particular interest for astrophysical science. The results of simulation are compared to spectrometer measurements for validation in section 3.

2. Modeling the Bolometer Spectral Response

2.A. Absorption principle of bolometers with $\lambda/4$ cavities. Case of the PACS bolometers

Bolometer camera instruments for far-infrared to millimeter astronomy traditionally use integrating cavities and circular-aperture feedhorns to couple the detector to the telescope beam [7]. Generally, $2F\lambda$ or $1F\lambda$ horns were used to populate the focal planes of submillimeter bolometer cameras, with the disadvantage of undersampling the image. This is the main reason why many submillimeter cameras now use arrays of $0.5F\lambda$ bare detectors that instantaneously fully sample the image [8], and in most of the cases, the absorption is made by using $\lambda/4$ cavities.

We now take the example of the Herschel PACS detectors to describe the general behaviour of bolometers with such cavities. The bolometers that we have developed

for Herschel were the first ones to use this cartesian architecture for far-infrared / submillimeter astronomy (see Fig. 1, [9]). The principle of wave absorption is based on the Dennison-Hadley interference filters [10], sometimes called Salisbury screens [11, 12]. This consists in a reflecting metal layer placed at the bottom of a cavity (backshort), normal to the plane of propagation of the wave. In such a device, because of interferences between the incident and the 180° phase shifted reflected waves, a standing wave develops with a minimum of electric field intensity at the backshort and a maximum at a distance $\lambda/4$ above it. If an absorber is placed there (typically a resistive layer with a square resistance equal to the impedance of free space), 100% of the energy at this wavelength λ can be absorbed. This absorbed incident power is converted to thermal energy and a thermometer measures the temperature rise.

For PACS, we use a semiconducting thermometer (phosphorous doped silicon, compensated with boron impurities, [13]) located at the center of an etched silicon membrane, working at cryogenic temperature (300 mK). The silicon film is patterned as a thin grid in order to reduce the heat capacity and the cross-section to cosmic rays [14]. A very thin layer of absorber is deposited on the supporting silicon grid and absorbs the incoming submillimeter radiation (see Fig. 2). This is not a uniform film, but a periodic resonant structure made of square loops, to improve the spectral response in a certain optical band (see next section for the details). The vacuum quarter-wave cavity is obtained by indium bumps hybridization techniques. These spacers have three distinct roles: (i) define the cavity height, (ii) make a thermal link between

the silicon detection layer and the substrate which is kept at a constant temperature, (iii) conduct the electrical signals between the thermometer and the cold-stage electronics which is located near the reflector. In PACS, the indium bumps are 20 μm thick. This enables us to cover the region between 60 μm and 210 μm with two distinct focal planes and three different optical filters [5]. Ideally, the detection of longer wavelengths should be possible by increasing the size of the indium bumps, but re-hybridization with larger structures is not a straightforward process.

From Fig. 2b it should be noted that the grid does not extend over the entire pixel surface (fill factor = 85%). Mirotznik et al. [15] have studied the influence of the area fill factor on the absorption for infrared detectors using $\lambda/4$ cavities. They showed that because of diffraction effects on the sides of the absorbing surface, the absorption can be improved by a factor up to 3 compared to the purely geometric estimate. We applied this principle to longer wavelengths and found that for PACS pixels (750 μm pixel pitch) at 150 μm , the correction factor is 1.1 (corresponds to a pixel pitch of 50 μm at a wavelength of 10 μm in Fig. 3 in [15]).

2.B. Characteristic matrix method

The model used to compute the spectral response of the bolometers is based on the method of characteristic matrix. This method was first described by Abelès [16], and is now widely used in the thin film domain thanks to its ability to be rapidly solved by common programming languages. Considering a thin dielectric layer of thickness

d_1 and refraction index n_1 , it is possible to build a 2×2 matrix that links the electric fields of the two interfaces a and b of the film, see Fig. 3.

For one layer, the relation is (from [17])

$$\begin{pmatrix} E_a \\ H_a \end{pmatrix} = \begin{pmatrix} \cos \beta_1 & (i \sin \beta_1)/\eta_1 \\ i\eta_1 \sin \beta_1 & \cos \beta_1 \end{pmatrix} \begin{pmatrix} E_b \\ H_b \end{pmatrix} \quad (1)$$

where E_a is the total electric field at the first interface (sum of incident and reflected fields), H_a is the total magnetic field at this same boundary. E_b and H_b are respectively the total electric field and magnetic field at interface b . The optical admittance of the medium is defined by $\eta_1 = n_1 \eta_0 \cos \theta_0$ for TE modes and $\eta_1 = n_1 \eta_0 / \cos \theta_0$ for TM modes. $\eta_0 = 1/Z_0 = 1/377\Omega$ is the free space admittance and θ_0 is the incident angle on the first layer. The phase shift β_1 due to the propagation through the medium is

$$\beta_1 = \frac{2\pi n_1 d_1 \cos \theta_0}{\lambda} \quad (2)$$

where λ is the wavelength in vacuum. The optical admittance is also defined by the general form

$$\eta = \frac{H}{E} \quad (3)$$

The equation (1) transforms into

$$\begin{pmatrix} E_a/E_b \\ H_a/E_b \end{pmatrix} = \begin{pmatrix} M \end{pmatrix} \begin{pmatrix} 1 \\ \eta_s \end{pmatrix} \quad (4)$$

where (M) is the characteristic matrix of the layer m and η_s is the admittance of the exit medium (substrate). Defining $B = E_a/E_b$ and $C = H_a/E_b$, then for a stack of q layers, Eq. (4) becomes

$$\begin{pmatrix} B \\ C \end{pmatrix} = \left\{ \prod_{r=1}^q \begin{pmatrix} \cos \beta_r & (i \sin \beta_r)/\eta_r \\ i\eta_r \sin \beta_r & \cos \beta_r \end{pmatrix} \right\} \begin{pmatrix} 1 \\ \eta_s \end{pmatrix} \quad (5)$$

which is the general expression for thin films theory. The amplitude reflexion coefficient at the entrance of the multi-layer is defined by

$$r = \frac{\eta_0 - \eta}{\eta_0 + \eta} \quad (6)$$

where $\eta = C/B$ is the optical admittance of the assembly. Combining Eqs. (3) and (6), the reflexion coefficient can be written as

$$r = \frac{B\eta_0 - C}{B\eta_0 + C} \quad (7)$$

The reflectance of the multi-layer stack is therefore given by $R = r \times r^*$. As we are interested in the spectral response of the detector (its absorptance A), the model will evaluate the quantity $A(\lambda) = 1 - R(\lambda)$, assuming that no radiation exits the back of the bolometer. The advantage of this method is that each layer in the stack is only characterized by a matrix and two parameters (n and d), making it well suited for computer modeling and optimization.

2.C. Spectral response of a simple cavity

The matrix method is applied to the case of the PACS bolometers by considering a stack of several thin layers (see Fig. 2): a reflector, a vacuum quarter-wave cavity, an absorber and a supporting thin silicon grid. Except for the quarter-wave cavity, all the other layers can not be considered as simple dielectric layers. The following sub-sections describe for each of these media the characteristic parameters that will be used in the matrix calculation. These parameters (thickness and refractive index) are listed in Table 1. As this method works with semi-infinite layers, the results of the simulation need to be confirmed by 3D finite-element software (see section C. 4).

2.C.1. Reflector

In order to get total reflection in the submillimeter wavelength range, the skin depth inside the metal forming the reflector has to be much smaller than the physical thickness. The skin depth is defined by

$$\delta = \sqrt{\frac{2}{\omega\mu_0\mu_r\sigma}} \quad (8)$$

where ω is the radian frequency, μ_0 is the permeability of free space ($4\pi \times 10^{-7}$ H/m), μ_r is the relative permeability of the metal and σ its electrical conductivity. For PACS, the metallic reflector consists in a 150 nm layer of gold deposited on a silicon substrate. From [18], the electrical conductivity for gold at sub-Kelvin temperatures is 5×10^9 S/m, so at a wavelength of 100 μm and with $\mu_r = 1$, the skin depth is $\delta \simeq 4$

nm, which is small compared to the gold thickness used in our devices.

In the schematic view of Fig. 3, this reflective layer corresponds to the substrate, with the difference that no wave is transmitted through it. At the surface of the metallic layer (the boundary b), the tangential electric field E_b is equal to 0. So $E_b = E_b^+ + E_b^- = 0$ and from [17] the tangential magnetic field is $H_b = \eta_1 E_b^+ - \eta_1 E_b^-$ (the positive sign describes incident waves, along the z axis, and the negative sign describes waves travelling in the opposite direction, η_1 is the optical admittance of medium 1, the quarter wave cavity). Combining the two equations gives $H_b = 2\eta_1 E_b^+$. By replacing E_b and H_b by these new values in Eq. (1), the Eq. (4) can be rewritten as

$$\begin{pmatrix} E_a/E_b^+ \\ H_a/E_b^+ \end{pmatrix} = \begin{pmatrix} B' \\ C' \end{pmatrix} = \begin{pmatrix} M \end{pmatrix} \begin{pmatrix} 0 \\ 2\eta_1 \end{pmatrix} \quad (9)$$

The optical admittance of the assembly in that special case is $\eta = C'/B'$, so Eq. (7) can still be used with B' and C' replacing B and C respectively.

2.C.2. Absorber

In the infrared to submillimeter domain, absorbers are traditionally made of thin metal layers whose thickness is adjusted in order to get the appropriate impedance. In Dennison-Hadley filters, it is well known that the maximum absorption efficiency (100% at the peak wavelength in theory) is obtained when the impedance of the absorber matches the free space impedance [12]. In the fields of radar technology

and telecommunications, absorbers with periodic resonant geometrical structures are sometimes used instead of homogenous layers, in order to increase the bandwidth (frequency selective surfaces or FSS, [19]). The PACS bolometers were the first detectors to combine these two techniques (Dennison-Hadley filters and FSS) for submillimeter astronomy. In our design, the selected pattern is an array of square loops (Fig. 4).

Because of the resonant properties of the design, the absorber can not be considered as a simple homogenous lossy medium. Several authors have studied the electromagnetic properties of square loop FSS using equivalent circuit models [19, 20]. They developed expressions for the complex impedance, Z_{loop} of square loop FSS that consist of a series RLC resonant circuit. It is defined by

$$Z_{loop} = R_s + i \left(X_L + \frac{1}{B_C} \right) \quad (10)$$

R_s is the sheet resistance and is responsible for the resistive loss defined by $R_s = 1/\sigma_n d$, where σ_n is the electrical conductivity of the material and d its thickness. The inductance X_L comes from the finite length of the squares and the capacitance B_C comes from the spacing between two loops. X_L and B_C are defined by

$$X_L = Z_0 \frac{d}{p} H(p, 2s, \lambda) \quad (11)$$

and

$$B_C = 4Z_0 \frac{d}{p} H(p, g, \lambda) \quad (12)$$

H is defined in the Appendix A. For a given material and a fixed film thickness, the equivalent sheet resistance of this type of periodic structure is larger than the one of a homogenous film. To obtain an absorber with an equivalent sheet resistance of $377 \Omega/\square$, the material composing the loops must have a sheet resistance $R_s = 377 \times F_R$. In the case of square loops, this reduction factor is at first order $F_R = s/p$ (see Fig. 4 for the description of the geometrical parameters). Electromagnetic simulations with a finite-element software have been performed to get the maximum absorption in the PACS bands and resulted in the following results: $R_s = 40 \Omega/\square$, $p = 35 \mu m$, $s = 4.4 \mu m$, $g = 4.4 \mu m$, $d = 30.6 \mu m$.

Choosing the absorbing material is a compromise between different technological constraints like the compatibility with other fabrication processes, the mechanical strength, the film deposition rate and the minimum achievable thickness. We use titanium nitride (TiN) because it satisfies most of these criteria. Given the TiN electrical conductivity at low temperature ($\sigma_n = 1 \times 10^6 \text{ S/m}$), from $R_s = 1/\sigma_n d$ we deduce the needed thickness, d , for impedance matching. For TiN, $40 \Omega/\square$ correspond to a thickness of 20 nm.

The TiN that is used for our device has a critical temperature $T_c = 3.9 \text{ K}$, it is therefore superconducting during the bolometer operation. Superconducting materi-

als below their critical temperature are nevertheless resistive for AC currents induced by the incoming submillimeter wave. The BCS theory [21] introduces the concept of complex conductivity for superconductors which is written $\sigma_s = \sigma_1 - i\sigma_2$. In [22], Mattis and Bardeen derived expressions for σ_1/σ_n and σ_2/σ_n that are function of temperature and of the electromagnetic wave frequency (σ_n is the normal electrical conductivity of the material at T_c). σ_1 describes the thermally excited normal electrons, and is therefore responsible for absorption of the EM field. σ_2 represents the superconducting electrons and is ignored in our model [23]. To take into account the superconducting effect, instead of taking the normal sheet resistance R_s , we have to consider another expression for TiN: $R'_s = 1/\sigma_s d$. In order to build the characteristic matrix of the TiN absorber, the refractive index must be obtained from the value of the complex impedance. Using the expression from [24], the complex refractive index of the thin TiN film is

$$\tilde{n}_{abs} = \sqrt{\frac{1}{2\rho\epsilon_0\omega}}(1 - i) \quad (13)$$

with $\rho = Z_{loop} \times d$.

2.C.3. Silicon grid

Because the TiN layer is too thin to be self-suspended, it is deposited on a 5 μm thick monocrystalline silicon grid that also contains the semiconducting thermometer (see Fig. 2). In [25], Motamedi et al. have estimated the effective refractive index of such

subwavelength microstructures. This grid has an effective refractive index calculated by the following expression:

$$n_{eff} = \left[\frac{(1 - f + fn_{Si}^2) [(1 - f)n_{Si}^2 + f] + n_{Si}^2}{2 [(1 - f)n_{Si}^2 + f]} \right]^{1/2} \quad (14)$$

where f is the silicon filling factor of the grid (61%), n_{Si} is the refractive index of bulk silicon (3.4) and therefore $n_{eff} = 2.2$. The presence of this 5 μm silicon grid in the pixel cavity will slightly modify the spectral response compared to the simple case “reflector / absorber”.

2.C.4. Simulation results

To validate the method of characteristic matrix as a pertinent simulation tool, the model is used to simulate the absorption of a PACS pixel (quarter-wave cavity of height $d_c = 20 \mu\text{m}$ and TiN loops with a pitch of $p = 35 \mu\text{m}$). The result is then compared to a simulation made with a finite element electromagnetic simulation software, Ansoft HFSSTM(see Fig. 5).

The curve a in Fig. 5 corresponds to the case of a simplified cavity made of a free-standing uniform absorber (with a surface impedance of $377\Omega/\square$, not superconducting) located 20 μm above a reflector. The spectral response is maximum at 80 μm which corresponds to $\lambda = 4d_c$, as expected for Dennison-Hadley filters. The sudden absorption decrease toward the short wavelengths (near 40 μm) corresponds to the “zero” of these devices, which occurs at $\lambda = 2d_c$. Adding a supporting 5 μm silicon grid above the absorber shifts the peak toward longer wavelengths (curve b). Even

if the response is very high in the case of a uniform absorber, its profile is not flat and cannot optimally cover the two PACS bands represented in blue and purple in Fig. 5. This limitation is overcome by introducing the textured absorber (curve *c*). The absorption is relatively constant over the entire PACS band and still very high (around 90%). The result is very similar to the HFSS modeling (curve *d*) which gives credit to the matrix method for this kind of simulation.

As it has been previously described, our model can simulate the effect of the superconductivity of TiN, for which HFSS is limited. When the effect of superconducting TiN is introduced, the long wavelengths absorption decreases compared to the case of normal TiN (curve *e*). This device is limited to operation up to $\sim 350 \mu\text{m}$ (when the absorption drops below 70%). This simulated absorption is compared to measurements in section 3.

2.D. Enhancing the Response at Long Wavelengths

2.D.1. Demonstrator at 450 μm

The matrix method is easy to modify and runs fast on a personal computer (it takes a few seconds to obtain the curves of Fig. 5). Therefore it is more adapted to test different design options than a typical finite element software. As a demonstration and example, the target band is $450 \mu\text{m}$ ($425 - 470 \mu\text{m}$), which corresponds to an atmospheric transmission band that is accessible from ground-based telescopes located on dry and high sites. Based on the idea of optical systems that use AR

layers to improve reflection or transmission in a particular band, our development consists in an AR layer placed at the front-end of the bolometer array (this structure is called PACS+AR thereafter). The free parameters for the design are: (i) the distance between the dielectric and the silicon grid of the bolometer, called airgap, (ii) the thickness of the AR dielectric layer in silicon, see Fig. 6b.

The model tests the different airgap/AR combinations and estimates, for each of these cases, the quality of the spectral response in the 450 μm band. Two criteria are evaluated to characterize the response: the average absorption coefficient in the band α , and its flatness index γ . The flatness index is defined by the average deviation from α ($\gamma = 100\%$ for a perfectly flat response and 0% for a step profile). We use a single performance coefficient ($C_{abs} = \alpha\gamma$) to find the optimum parameters that provide the best response in the band. Results are displayed in the form of a 2D map (Fig. 6a). It shows that different combinations of thicknesses give good results, but not all of them are easily feasible. Solution *A* for example, which gives the best performance, corresponds to a very thin AR layer (13 μm) located just 2 μm above the PACS grid. Even if this solution is technically possible to build, it would require a complete design study, which is not the goal of this work. The solution *B*, which also gives a high response efficiency, requires the insertion of a 51 μm thick silicon layer at a distance of 179 μm (airgap) above the bolometer grid. As the interpixels walls have a fixed height of 450 μm because of the etching process (Fig. 2a), this solution would require a silicon waffle shaped structure encapsulated in the PACS array. Similar structures

have been made in our laboratory, and were successfully mounted on existing PACS arrays. For technical and practical reasons, we first focused on a simpler solution, (C), that gives a lower C_{abs} coefficient (mainly because the response is not flat), but which is technically easier to implement: a $138\ \mu\text{m}$ thick silicon layer is deposited (glued) directly on the top of the $450\ \mu\text{m}$ interpixel walls. Because of this simplicity of assembly, this solution has been selected to experimentally validate our method (see section 3).

Once the 2D map is obtained by the model (~ 30 minutes of calculation time on a typical PC), the chosen solution is studied more in details (comparison with HFSSTM). Fig. 7a shows the corresponding spectral response of solution C . The average absorption coefficient is 88% in the $450\ \mu\text{m}$ band with HFSSTM, 71% with the matrix method for normal TiN and 65% for superconducting TiN. The different curves are in very good agreement between $100\ \mu\text{m}$ and $440\ \mu\text{m}$, but the matrix method shows a larger dip near $480\ \mu\text{m}$ compared to the HFSSTM case. The improvement in spectral response is significant compared to the bare bolometer pixel (43% absorption). To use this detector in a scientific instrument, the parasitic peaks of absorption at shorter wavelengths (below $400\ \mu\text{m}$) need to be strongly attenuated with a combination of long-pass and band-pass optical filters. The model has also been used to test the influence of the angle of incidence on the spectral response of the detector. Results on Fig. 7b show that the absorption is constant up to 20° which is good enough for the requirements of a scientific bolometer camera (the final f-number

is typically between 3 and 5 in a submillimeter camera with filled arrays, [26]).

2.D.2. 350-735 μm Coverage

Based on this method, we have investigated the possibility to cover all the atmospheric windows between 350 μm and 735 μm with a 20 μm $\lambda/4$ cavity PACS array topped with an adapted AR layer. The results corresponding to the best performance are presented in Table 2 and in Fig. 9.

For each atmospheric band considered in this example, there is a particular air-gap/AR combination that improves the spectral response. Except for the 350 μm band, the absorption is improved by a minimum factor 2 (6 in the 735 μm band). All these solutions require waffle shaped structures inserted in the original array.

3. Experimental Results

3.A. Spectrometer Characterization

We used a polarizing Fourier transform spectrometer (Martin-Puplett) to measure the spectral response of the bolometer arrays with or without an AR layer. The experimental setup is detailed in Appendix B. In this setup, the global absorption of the 16×16 pixels array is deduced from the reflected signal of the FTS beam on its surface. Because the incident beam is larger than one pixel and because it is not normal to the surface (the incident angle is $\sim 5^\circ$), the interpixel silicon walls add a small scattering effect which results in oscillations in the spectral response. The model

has been modified in order to take this effect into account, and the result can be seen in Fig. 9a for the normal PACS array case. Fig. 9b shows the spectral response of the PACS+AR layer (solution *C*). The experimental data look very similar to the model, with an average absorption of 74% in the 450 μm band.

3.B. Bolometer camera on a telescope

We designed a camera for astrophysical observations in the 450 μm band equipped with a 16×16 PACS+AR array, similar to the one characterized with the FTS. This instrument is called p-ArTéMiS [26], and was installed at the Cassegrain focus of the APEX telescope in the Atacama desert in Chile. During the different runs (in 2007 and 2009), the detector showed the expected performances in terms of optics and sensitivity [27, 28].

4. Conclusion

Large arrays made of bolometers using quarter wave cavities are now commonly used in submillimeter cameras for astrophysics. Once assembled, it is not easy to modify the intrinsic spectral properties of these detectors. However, there are cases where it is interesting to use an array that was originally designed for a particular band to operate in other bands. For this purpose, our group has developed a technique using a front end anti-reflecting dielectric layer that enhances the spectral response of bolometer arrays in other windows. To get the optimum parameters of the dielectric

layer, we have developed a model based on the method of characteristic matrix for thin films. The results of the model have been compared to outputs from Ansoft HFSSTM and show very good accordance.

We applied this general method to the case of the Herschel PACS bolometer arrays which was developed for the 60 μm - 210 μm window. The cavity of the PACS detectors is formed by the hybridization of two layers with 20 μm indium bumps. We showed that it is possible to have a good spectral response for all the atmospheric transmission windows between 350 μm and 735 μm by adding a dielectric layer (silicon) with a thickness calculated by the model, over the original array. This design has been tested and validated experimentally in a spectrometer, and used for science purpose in a small submillimeter camera.

Appendix A: Details of the parameters for the square loops resonance.

H is defined by

$$H(p, s, \lambda) = \frac{p}{\lambda} \cos \theta \left[\ln \left(\frac{1}{\sin \frac{\pi s}{2p}} \right) + G(p, s, \lambda) \right] \quad (15)$$

where θ is the incident angle and

$$G(p, s, \lambda) = \frac{1}{2} \frac{(1 - \phi^2)^2 \left[\left(1 - \frac{\phi^2}{4}\right) (A_+ + A_-) + 4\phi^2 A_+ A_- \right]}{\left(1 - \frac{\phi^2}{4}\right) + \phi^2 \left(1 + \frac{\phi^2}{2} - \frac{\phi^4}{8}\right) (A_+ + A_-) + 2\phi^6 A_+ A_-}$$

where

$$A_{\pm} = \frac{1}{\sqrt{1 \pm \frac{2p \sin \theta}{\lambda} - \left(\frac{p \cos \theta}{\lambda}\right)^2}} - 1 \quad (16)$$

and

$$\phi = \frac{\sin \pi s}{2p} \quad (17)$$

Appendix B: Martin-Puplett FTS

Our spectrometer has a typical resolution of 0.25 cm^{-1} in the 100 to 700 μm band and operates at cryogenic temperatures. Measurements were made in reflective mode by comparison with a perfectly reflecting mirror (see Fig. 10). By considering that the power which is not reflected by the bolometer array is entirely absorbed, the spectral response is calculated with $A = 1 - R_{Array}/(C \times R_{Mirror})$, where R_{Array} is the signal reflected from the bolometer array, R_{Mirror} is the signal reflected from the mirror and C is a geometrical correcting factor. The pixel response is obtained from the global response of the array.

References

1. G. L. Pilbratt, J. R. Riedinger, T. Passvogel, G. Crone, D. Doyle, U. Gageur, A. M. Heras, C. Jewell, L. Metcalfe, S. Ott, M. Schmidt, ‘‘Herschel Space Observa-

- tory. An ESA facility for far-infrared and submillimetre astronomy,” *A&A* **518**, L1 (2010).
2. T. Nakagawa, H. Murakami, “Mid- and far-infrared astronomy mission SPICA,” *Advances in Space Research* **40**, 679-683 (2007).
 3. R. Güsten, L. Å. Nyman, P. Schilke, K. Menten, C. Cesarsky, R. Booth, “The Atacama Pathfinder EXperiment (APEX) - a new submillimeter facility for southern skies -,” *A&A* **454**, L13-L16 (2006).
 4. T. Sebring, “The Cornell Caltech Atacama Telescope: progress and plans 2010,” *Proc. SPIE* **7733**, 77331X (2010).
 5. A. Poglitsch, C. Waelkens, N. Geis, H. Feuchtgruber, B. Vandenbussche, L. Rodriguez, O. Krause, E. Renotte, “The Photodetector Array camera and Spectrometer (PACS) on the Herschel Space Observatory,” *A&A* **518**, L2 (2010).
 6. N. Billot, P. Agnèse, J.-L. Auguères, A. Béguin, A. Bouère, O. Boulade, C. Cara, C. Cloué, E. Doumayrou, L. Duband, B. Horeau, I. le Mer, J. Lepennec, J. Martignac, K. Okumura, V. Révéret, M. Sauvage, F. Simoens, L. Vigroux, “The Herschel/PACS 2560 bolometers imaging camera,” *Proc. SPIE* **6265** 62650D (2006).
 7. P. L. Richards, “Bolometers for infrared and millimeter waves,” *J. Appl. Phys.* **76**, 1-24 (1994).
 8. M. J. Griffin, J. J. Bock, W. K. Gear, “Relative performance of filled and feedhorn-

- coupled focal-plane architectures,” *Appl. Opt.* **41**, 6543-6554 (2002).
9. P. Agnèsè, C. Buzzi, P. Rey, L. Rodriguez, J.-L. Tissot, “New technological development for far-infrared bolometer arrays,” *Proc. SPIE* **3698**, 284 (1999).
 10. L. N. Hadley, D. M. Dennison, “Reflection and transmission interference filters,” *J. Opt. Soc. Am.* **37**, 451-465 (1947).
 11. W. W. Salisbury, “Absorbent body for electromagnetic waves,” US patent 2599944, June 10 1952.
 12. R. L. Fante, M. T. McCormack, “Reflection properties of the Salisbury screen,” *IEEE Trans. Antennas Propag.* **36**, 1443-1454 (1988).
 13. J. Zhang, W. Cui, M. Juda, D. McCammon, R. L. Kelley, S. H. Moseley, C. K. Stahle, A. E. Szymkowiak, “Hopping conduction in partially compensated doped silicon,” *Phys. Rev. B* **48**, 2312-2319 (1993).
 14. J. J. Bock, D. Chen, P. D. Mauskopf, A. E. Lange, “A novel bolometer for infrared and millimeter-wave astrophysics,” *Space Sci. Rev.* **74**, 229-235 (1995).
 15. M. Mirotznik, W. A. Beck, D. Prather, R. Vollmerhausen, R. Driggers, “Optical absorption modeling of thermal infrared detectors by use of the finite-difference time-domain method,” *Opt. Lett.* **26**, 280-282 (2001).
 16. F. Abelès, “La théorie générale des couches minces,” *Le Journal de Physique et le Radium*, **11**, 307-310 (1950).
 17. H.A. Macleod, *Thin-Film Optical Filters: 3rd edition* (Adam Hilger Ltd. Bristol,

- 1986).
18. R. A. Matula, "Electrical resistivity of copper, gold, palladium, and silver," *J. Phys. Chem. Ref. Data* **8**, 1147-1298 (1979).
 19. R. J. Langley, E. A. Parker, "Equivalent circuit model for arrays of square loops," *Electronics Letters* **18**, 294-296 (1982).
 20. B. Monacelli, J. B. Pryor, B. A. Munk, D. Kotter, G. D. Boreman, "Infrared frequency selective surface based on circuit-analog square loop design," *IEEE Trans. Antennas Propag.* **53**, 745-752 (2005).
 21. J. Bardeen, L. N. Cooper, J. R. Schrieffer, "Theory of superconductivity," *Phys. Rev.* **108**, 1175-1204 (1957).
 22. D. C. Mattis, J. Bardeen, "Theory of the anomalous skin effect in normal and superconducting metals," *Phys. Rev.* **111**, 412-417 (1958).
 23. R. L. Kautz, "Picosecond pulses on superconducting striplines," *J. Appl. Phys.* **49**, 308-314 (1978).
 24. C. Hilsum, "Infrared absorption of thin metal films," *J. Opt. Soc. Am.* **44**, 188-191 (1954).
 25. M. E. Motamedi, W. H. Southwell, W. J. Gunning, "Antireflection surfaces in silicon using binary optics technology," *Appl. Opt.* **31**, 4371-4376 (1992).
 26. M. Talvard, Ph André, L. Rodriguez, J. Le Penec, C. De Breuck, V. Revéret, P. Agnèsè, O. Boulade, E. Doumayrou, D. Dubreuil, E. Ercolani, P. Gallais, B.

- Horeau, P.-O. Lagage, B. Leriche, M. Lortholary, J. Martignac, V. Minier, E. Pantin, D. Rabanus, J. Relland, G. Willmann, “Recent results obtained on the APEX 12m antenna with the ArTeMiS prototype camera,” *Proc. SPIE* **7020**, 702009.1-702009.9 (2008).
27. Ph. André, V. Minier, P. Gallais, V. Revéret, J. Le Penneç, L. Rodriguez, O. Boulade, E. Doumayrou, D. Dubreuil, M. Lortholary, J. Martignac, M. Talvard, C. De Breuck, G. Hamon, N. Schneider, S. Bontemps, P.-O. Lagage, E. Pantin, H. Roussel, M. Miller, C. R. Purcell, T. Hill, J. Stutzki, “First 450 μm dust continuum mapping of the massive star-forming region NGC 3576 with the P-ArTéMiS bolometer camera,” *Astron. Astrophys.* **490**, L27-L30 (2008).
28. V. Minier, Ph. André, P. Bergman, F. Motte, F. Wyrowski, J. Le Penneç, L. Rodriguez, O. Boulade, E. Doumayrou, D. Dubreuil, P. Gallais, G. Hamon, P.-O. Lagage, M. Lortholary, J. Martignac, V. Revéret, H. Roussel, M. Talvard, G. Willmann, H. Olofsson, “Evidence of triggered star formation in G327.3-0.6. Dust-continuum mapping of an infrared dark cloud with P-ArTéMiS,” *Astron. Astrophys.* **501**, L1-L4 (2009).

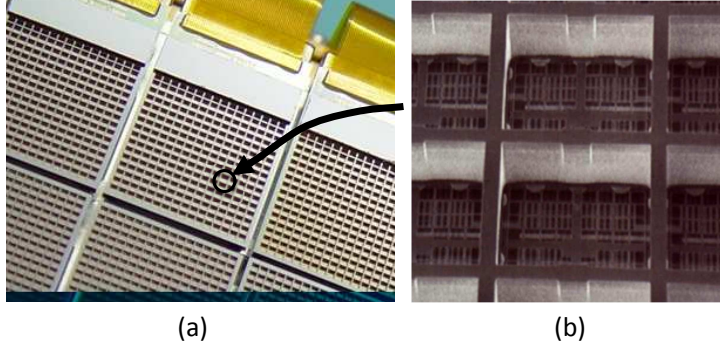


Fig. 1. (Color online) (a) View of the PACS 16×16 bolometer arrays. (b) Microscope view of single bolometers inside an array.

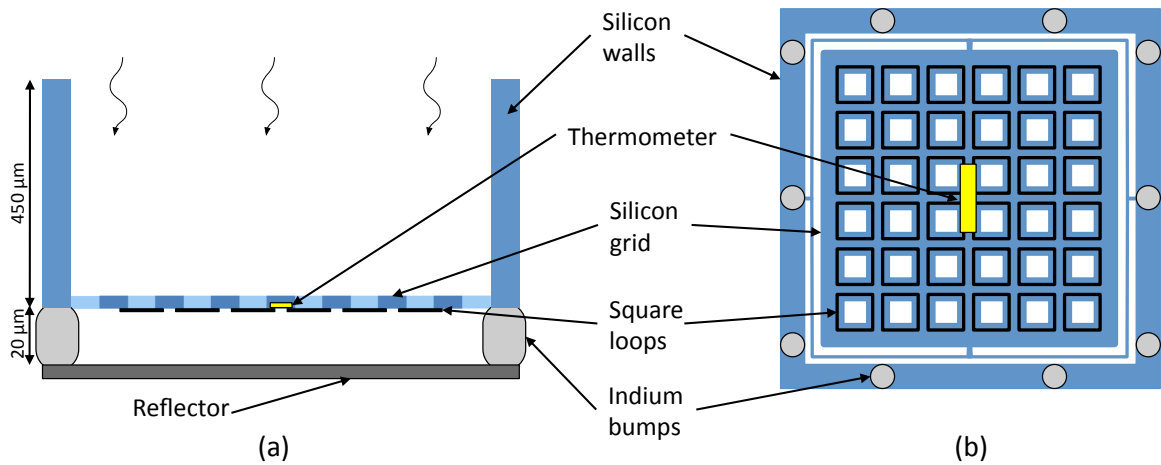


Fig. 2. (Color online) (a) Side view of the quarter-wave cavity architecture (Salisbury screen) of the PACS bolometric pixel. The absorber (square loops) is deposited on the back side of the silicon grid. (b) View of the pixel grid from below. The Si:P:B thermometer is located at the center of the silicon grid. The grid is linked to the interpixel walls via narrow silicon beams ($2 \mu\text{m}$ wide). The silicon walls are $450 \mu\text{m}$ high and $70 \mu\text{m}$ thick. The pixel pitch is $750 \mu\text{m}$.

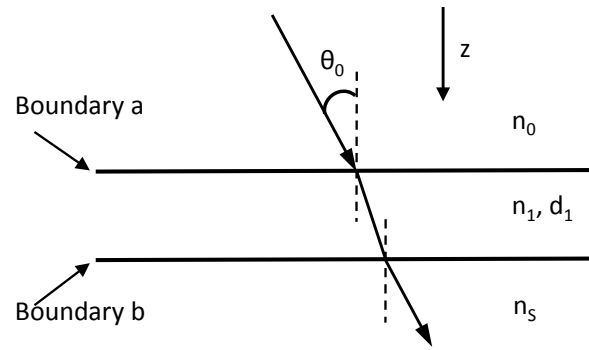


Fig. 3. Simple case of a thin film with refractive index n_1 and thickness d_1 , over a substrate with refractive index n_s .

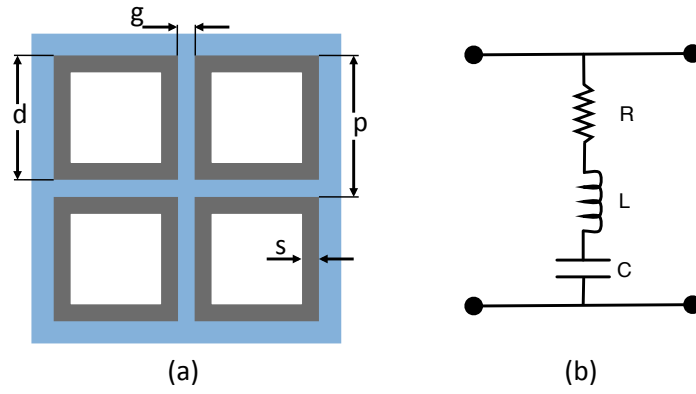


Fig. 4. (Color online) (a) Sketch of the TiN square-loop array deposited on the structured silicon grid (light gray). $p = 35 \mu m$, $s = 4.4 \mu m$, $g = 4.4 \mu m$, $d = 30.6 \mu m$. (b) The electrical equivalent (RLC circuit) of the square-loop array.

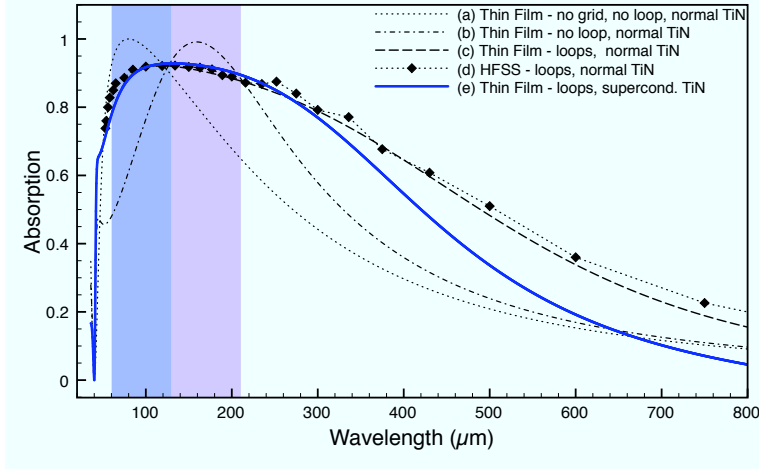


Fig. 5. (Color online) Simulated absorption curves for the PACS bolometers (20 μm cavity, 35 μm square loops) for different cases (see the legend). The PACS short photometric band is represented by the blue area (60 to 110 μm) and the PACS long band is in purple (110 to 210 μm).

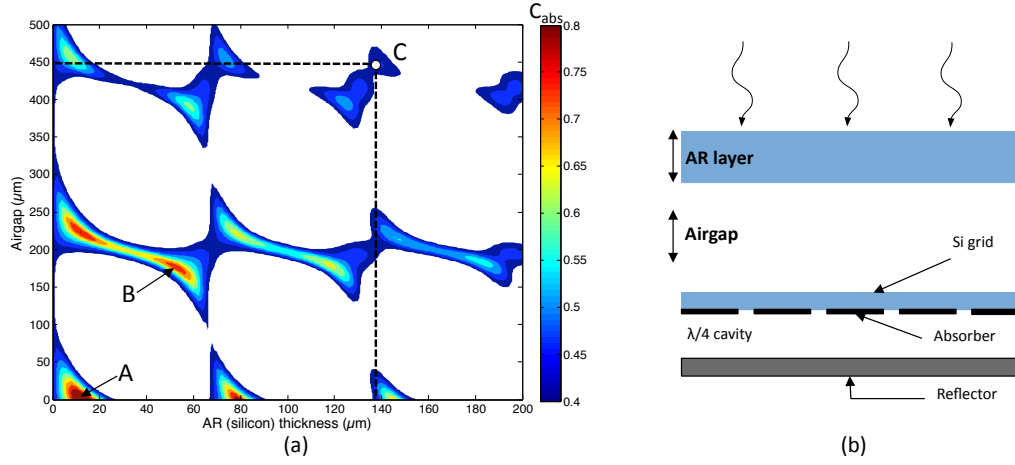


Fig. 6. (Color online) (a) Average performance coefficient (C_{abs}) in the 450 μm band as a function of airgap thickness and silicon AR layer thickness. Cases A, B and C are described in the text. (b) Thin film representation of the PACS bolometric pixel + the AR layer on the top of it (semi-infinite layers, not to scale).

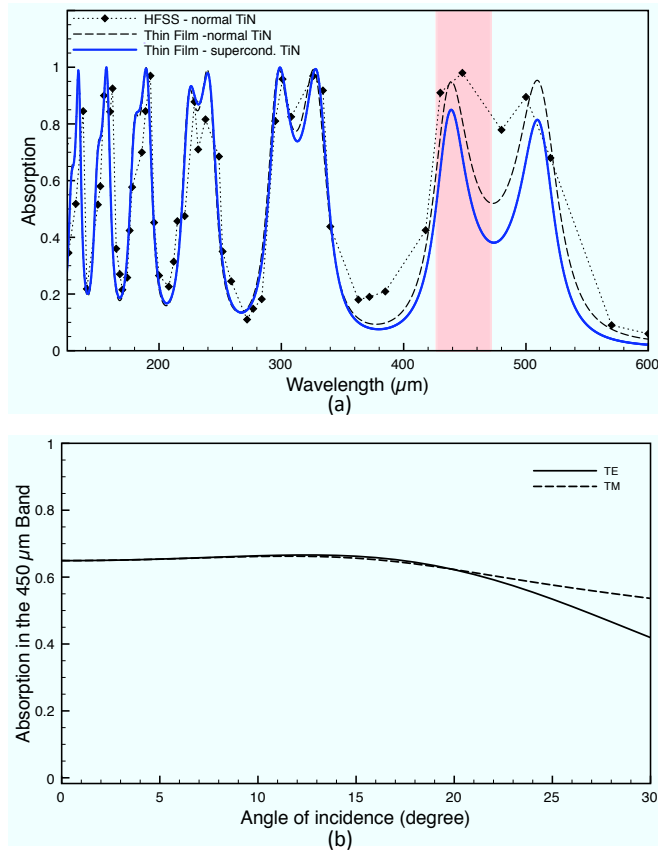


Fig. 7. (Color online) (a) Simulated spectral response for the PACS + AR layer (solution C on Fig. 6a: airgap = 450 μm , silicon AR = 138 μm). The red surface represents the 450 μm atmospheric band. (b) Influence of the angle of incidence on the absorption coefficient in the 450 μm band.

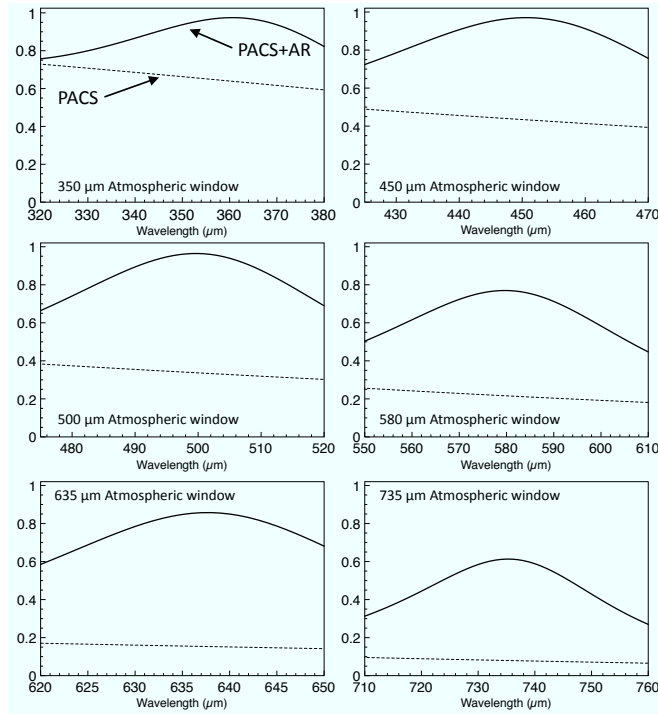


Fig. 8. Spectral responses of a $20 \mu\text{m}$ $\lambda/4$ cavity covered by different AR layers thicknesses and airgaps. Each curve corresponds to an atmospheric window defined in Table 2.

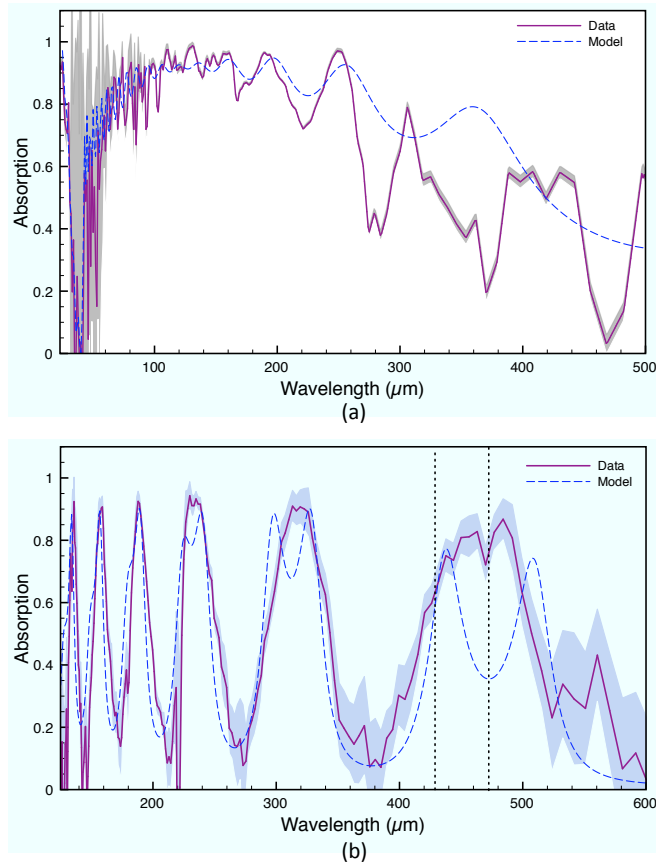


Fig. 9. (Color online) (a) Experimental spectral response of the PACS array. The gray surface corresponds to the 3σ error bars. (b) PACS+AR experimental spectral response (solution C on Fig. 6a, $450\ \mu\text{m}$ window).

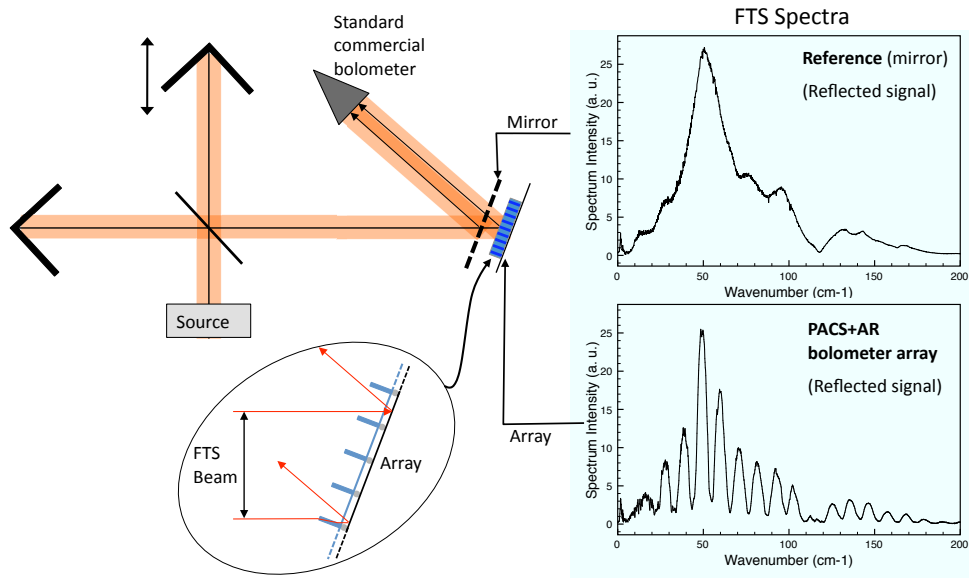


Fig. 10. (Color online) Description of the Fourier Transform Spectrometer setup used for the spectral response characterization. The incident angle on the array has been exaggerated for clarity (5° in reality). The two curves are examples showing typical spectra from reflected reference beam (above) and reflected array beam.

Table 1. Layers parameters for PACS bolometers

Layer	Thickness	Refractive Index	Notes
reflector	150 nm	-	reflective substrate
$\lambda/4$ cavity	20 μm	1	vacuum cavity
TiN absorber	20 nm	\tilde{n}_{abs}	$\tilde{n}_{abs} = \sqrt{\frac{1}{2\rho\epsilon_0\omega}}(1 - i)$
Si grid	5 μm	2.2	effective refractive index

Table 2. Average absorption coefficient in different atmospheric bands

Band	PACS	PACS+AR		
	Abs_x	Abs_x	Airgap (μm)	AR (μm)
350 μm	68%	91%	133	45
450 μm	43%	90.5%	179	51
500 μm	36%	86%	206	53
580 μm	23%	67%	290	20
635 μm	16.5%	75%	285	55
735 μm	8%	48%	337	60