

Planck early results: XMM-Newton follow-up for validation of Planck cluster candidates

Planck Collaboration: N. Aghanim⁴⁵, M. Arnaud⁵⁵, M. Ashdown^{53,76}, J. Aumont⁴⁵, C. Baccigalupi⁶⁶, A. Balbi²⁸, A. J. Banday^{75,6,60}, R. B. Barreiro⁵⁰, M. Bartelmann^{74,60}, J. G. Bartlett^{3,51}, E. Battaner⁷⁸, K. Benabed⁴⁶, A. Benoît⁴⁶, J.-P. Bernard^{75,6}, M. Bersanelli^{26,40}, R. Bhatia³⁴, J. J. Bock^{51,7}, A. Bonaldi³⁶, J. R. Bond⁵, J. Borrill^{59,70}, F. R. Bouchet⁴⁶, M. L. Brown^{76,53}, M. Bucher³, C. Burigana³⁹, P. Cabella²⁸, C. M. Cantalupo⁵⁹, J.-F. Cardoso^{56,3,46}, P. Carvalho⁷⁶, A. Catalano^{3,54}, L. Cayón¹⁹, A. Challinor^{77,53,10}, A. Chamballu⁴³, L.-Y. Chiang⁴⁷, G. Chon^{61,76}, P. R. Christensen^{64,29}, E. Churazov^{60,69}, D. L. Clements⁴³, S. Colafrancesco³⁷, S. Colombi⁴⁶, F. Couchot⁵⁸, A. Coulais⁵⁴, B. P. Crill^{51,65}, F. Cuttaia³⁹, A. Da Silva⁹, H. Dahle^{48,8}, L. Danese⁶⁶, P. de Bernardis²⁵, G. de Gasperis²⁸, A. de Rosa³⁹, G. de Zotti^{36,66}, J. Delabrouille³, J.-M. Delouis⁴⁶, F.-X. Désert⁴², J. M. Diego⁵⁰, K. Dolag⁶⁰, S. Donzelli^{40,48}, O. Doré^{51,7}, U. Dörl⁶⁰, M. Douspis⁴⁵, X. Dupac⁵³, G. Efstathiou⁷⁷, T. A. Enßlin⁶⁰, F. Finelli³⁹, I. Flores^{49,30}, O. Forni^{75,6}, M. Frailis³⁸, E. Franceschi³⁹, S. Fromenteau^{3,45}, S. Galeotta³⁸, K. Ganga^{3,44}, R. T. Génova-Santos^{49,30}, M. Giard^{75,6}, G. Giardino³⁴, Y. Giraud-Héraud³, J. González-Nuevo⁶⁶, R. González-Riestra³², K. M. Górski^{51,80}, S. Gratton^{53,77}, A. Gregorio²⁷, A. Gruppuso³⁹, D. Harrison^{77,53}, P. Heinämäki⁷³, S. Henrot-Versillé⁵⁸, C. Hernández-Monteagudo⁶⁰, D. Herranz⁵⁰, S. R. Hildebrandt^{7,57,49}, E. Hivon⁴⁶, M. Hobson⁷⁶, W. A. Holmes⁵¹, W. Hovest⁶⁰, R. J. Hoyland⁴⁹, K. M. Huffenberger⁷⁹, G. Hurier⁵⁷, A. H. Jaffe⁴³, M. Juvela¹⁸, E. Keihänen¹⁸, R. Keskitalo^{51,18}, T. S. Kisner⁵⁹, R. Kneissl^{31,4}, L. Knox²¹, H. Kurki-Suonio^{18,35}, G. Lagache⁴⁵, J.-M. Lamarre⁵⁴, A. Lasenby^{76,53}, R. J. Laureijs³⁴, C. R. Lawrence⁵¹, M. Le Jeune³, S. Leach⁶⁶, R. Leonardi^{33,34,22}, A. Liddle¹⁷, M. Linden-Vørnle¹², M. López-Caniego⁵⁰, P. M. Lubin²², J. F. Macías-Pérez⁵⁷, B. Maffei⁵², D. Maino^{26,40}, N. Mandolesi³⁹, R. Mann⁶⁷, M. Maris³⁸, F. Marleau¹⁴, E. Martínez-González⁵⁰, S. Masi²⁵, S. Matarrese²⁴, F. Matthai⁶⁰, P. Mazzotta²⁸, A. Melchiorri²⁵, J.-B. Melin¹¹, L. Mendes³³, A. Mennella^{26,38}, S. Mitra⁵¹, M.-A. Miville-Deschênes^{45,5}, A. Moneti⁴⁶, L. Montier^{75,6}, G. Morgante³⁹, D. Mortlock⁴³, D. Munshi^{68,77}, A. Murphy⁶³, P. Naselsky^{64,29}, P. Natoli^{28,2,39}, C. B. Netterfield¹⁴, H. U. Nørgaard-Nielsen¹², F. Novello⁴⁵, D. Novikov⁴³, I. Novikov⁶⁴, S. Osborne⁷¹, F. Pajot⁴⁵, F. Pasian³⁸, G. Patanchon³, O. Perdereau⁵⁸, L. Perotto³⁷, F. Perrotta⁶⁶, F. Piacentini²⁵, M. Piat³, E. Pierpaoli¹⁶, R. Piffaretti^{55,11}, S. Plaszczynski⁵⁸, E. Pointecouteau^{75,6*}, G. Polenta^{2,37}, N. Ponthieu⁴⁵, T. Poutanen^{35,18,1}, G. W. Pratt⁵⁵, G. Prézeau^{7,51}, S. Prunet⁴⁶, J.-L. Puget⁴⁵, R. Rebolo^{49,30}, M. Reinecke⁶⁰, C. Renault⁵⁷, S. Ricciardi³⁹, T. Riller⁶⁰, I. Ristorcelli^{75,6}, G. Rocha^{51,7}, C. Rosset³, J. A. Rubiño-Martín^{49,30}, B. Rusholme⁴⁴, E. Saar⁷², M. Sandri³⁹, D. Santos⁵⁷, B. M. Schaefer⁷⁴, D. Scott¹⁵, M. D. Seiffert^{51,7}, G. F. Smoot^{20,59,3}, J.-L. Starck^{55,11}, F. Stivoli⁴¹, V. Stolyarov⁷⁶, R. Sunyaev^{60,69}, J.-F. Sygnet⁴⁶, J. A. Tauber³⁴, L. Terenzi³⁹, L. Toffolatti¹³, M. Tomasi^{26,40}, J.-P. Torre⁴⁵, M. Tristram⁵⁸, J. Tuovinen⁶², L. Valenziano³⁹, L. Vibert⁴⁵, P. Vielva⁵⁰, F. Villa³⁹, N. Vittorio²⁸, B. D. Wandelt^{46,23}, S. D. M. White⁶⁰, D. Yvon¹¹, A. Zacchei³⁸, and A. Zonca²²

(Affiliations can be found after the references)

Preprint online version: January 12, 2011

ABSTRACT

We present the XMM-Newton follow-up for confirmation of Planck cluster candidates. Twenty-five candidates have been observed to date using snapshot (~10ksec) exposures: ten as part of a pilot programme to sample a low range of signal-to-noise ratios ($4 < S/N < 6$), and a further fifteen in a programme to observe a sample of $S/N > 5$ candidates. The sensitivity and spatial resolution of XMM-Newton allows unambiguous discrimination between clusters and false candidates. A total of 21 candidates are confirmed as extended X-ray sources. Seventeen are single clusters, the majority of which are found to have highly irregular and disturbed morphologies. The remaining four sources are multiple systems, including the unexpected discovery of a supercluster at $z = 0.45$. For most of the sources we are able to derive a redshift estimate from the X-ray Fe K line (albeit of variable quality). The new clusters span the redshift range $0.09 \lesssim z \lesssim 0.54$ with a median redshift of $z \sim 0.37$. A first estimate is made of their X-ray properties including the characteristic size, which is used to improve the SZ Compton parameter estimate. The follow-up validation programme has helped to optimise the Planck candidate selection process. It has also provided a preview of the X-ray properties of these newly-discovered clusters, allowing comparison to their SZ properties, and to the X-ray and SZ properties of known clusters observed in the Planck survey. Our results suggest that Planck may have started to reveal a non-negligible population of massive dynamically perturbed objects that is under-represented in X-ray surveys. However, despite their particular properties, these new clusters appear to follow the $Y_{500}-Y_X$ relation established for X-ray selected objects.

Key words. Cosmology: observations, Galaxies: cluster: general, Galaxies: clusters: intracluster medium, Cosmic background radiation, X-rays: galaxies: clusters

1. Introduction

The Planck¹ satellite has been surveying the sky across nine frequencies in the microwave band since August 2009. The result-

* Corresponding author: etienne.pointecouteau@cesr.fr

¹ Planck (<http://www.esa.int/Planck>) is a project of the European Space Agency (ESA) with instruments provided by two scientific consortia funded by ESA member states (in particular the lead countries: France and Italy) with contributions from NASA (USA), and

ing data set allows the detection of galaxy clusters through the Sunyaev-Zeldovich (SZ) effect (Sunyaev & Zeldovich 1972), the spectral distortion of the cosmic microwave background (CMB) generated via inverse Compton scattering of CMB photons by the hot electrons in the Intra-Cluster Medium (ICM). The total SZ signal is expected to be closely related to the cluster mass

telescope reflectors provided in a collaboration between ESA and a scientific consortium led and funded by Denmark.

(e.g., da Silva et al. 2004) and its brightness is insensitive to redshift dimming. As a result, SZ surveys can potentially provide unbiased cluster samples covering a wide range of redshifts that are expected to be close to mass-selected. As compared to other SZ instruments, *Planck* brings a unique nine-band coverage from 30 to 857 GHz and a relatively high, band-dependent spatial resolution of 5–10 arcmin. Most crucially, the *Planck* SZ survey covers an exceptionally large volume, being the first all-sky survey capable of blindly detecting clusters since the *ROSAT* All-Sky Survey (*RASS*) in the X-ray domain. As a consequence, *Planck* is detecting previously unknown, massive clusters that do not appear in other SZ surveys. Its all-sky coverage allows detection of the rarest clusters, the most massive objects lying in the exponential tail of the mass function. These are the best clusters for precise cosmology: their abundance evolution is the most sensitive to the cosmological parameters (Voit 2005), and their gas mass fractions can be used as a standard candle (Allen et al. 2008). In addition, clusters in this high-mass regime are X-ray bright, making their observation easier, and their ICM is expected to be the least affected by non-gravitational processes. These newly-discovered *Planck* clusters will thus also be ideal targets for studying the physics of the gravitational collapse that drives all cluster formation.

The *Planck* survey is providing a sample of cluster candidates. Any such survey sample is expected to include a fraction of false detections, due for example to fluctuations in the complex microwave astrophysical sky. In addition, as a result of *Planck*'s moderate spatial resolution at SZ frequencies with respect to typical cluster sizes, a *Planck* cluster candidate SZ measurement essentially provides coordinates and SZ flux estimates; these estimates are further hampered by the flux-size degeneracy discussed extensively in Planck Collaboration (2011d). A vigorous follow-up programme is therefore required to scientifically exploit *Planck* cluster candidate data. Such a programme includes candidate confirmation, which is the final part of the catalogue validation, in addition to redshift measurements, estimation of relevant physical parameters (including cluster size allowing precise SZ flux estimates), and investigation of scaling properties. In particular, measurement of the relation between the SZ ‘luminosity’ and the mass as a function of redshift, z , is essential for calculation of the survey selection function and for related cosmological applications.

The all-sky nature of the *Planck* survey means that confirmation and redshift measurement of cluster candidates is not a trivial task. In the optical domain, the only publicly available large survey is the SDSS. Although cross-correlation with this survey can be used to confirm candidates up to $z \sim 0.6$, it covers only part of the Northern sky. Furthermore, optical confirmation is hampered by the relatively large *Planck* source position uncertainty, which can be up to $5'$ (Planck Collaboration 2011d). To discriminate between a true counterpart and a chance association with low-mass systems at various redshifts within the *Planck* error box, optical mass and photometric redshift estimates with a wide-field, multi-band, instrument are required.

In contrast, confirmation in X-rays offers definite advantages. Above the galactic plane, the detection of extended X-ray emission is an unambiguous signature of a cluster, and the density-squared dependence of the X-ray emission reduces projection effects nearly to zero. Furthermore, the low space density of groups and clusters in a typical X-ray exposure makes spurious association with a *Planck* candidate unlikely. For instance, the *XMM-LSS* survey found 29 systems in 5 deg^2 using 10 ksec *XMM-Newton* exposures (Pacaud et al. 2007). Such a detection rate corresponds to only a 10 per cent probability of

finding a cluster by chance within a $5'$ aperture, the conservative *Planck* error box. Finally, as both X-ray and SZ observations probe the same medium, spurious associations can be readily assessed from a consistency check between the X-ray and SZ flux, assuming a reasonable redshift range (as illustrated in Sec. 3.2).

In this context, and because of its superior sensitivity, *XMM-Newton* (Jansen et al. 2001) is the best instrument for following up newly-detected *Planck* clusters up to high z . A short snapshot *XMM-Newton* exposure is sufficient to confirm any *Planck* cluster candidate at least up to $z = 1.5$ (Sec. 2.4), and for the X-ray brightest objects, provide the source redshift from the iron K line (Sec 4.1). Because of their high mass, cluster extent is expected to be larger than $1'$ and the *XMM-Newton* spatial resolution is sufficient to discriminate between a point source and extended emission.

In order to assess the galaxy cluster nature of the *Planck* SZ sources and to help guarantee the integrity of the final *Planck* SZ legacy catalogue to be released in 2012, we have thus proposed to use *XMM-Newton* to confirm the highest significance cluster candidates discovered by *Planck*. This validation programme consists of snapshot (~ 10 ksec) observations and is undertaken via an agreement between the ESA *XMM-Newton* and *Planck* project scientists. In this paper we present the definition and results of this programme. To date, 25 *Planck* SZ sources have been observed, making use of *XMM-Newton* Director's Discretionary Time. Of these, 21 sources have been confirmed. In compliance with *Planck* policies for follow-up, the *XMM-Newton* data of the 25 *Planck* sources are made public with the publication of the Early Release Compact Source Catalogue (ERCSC).

The *XMM-Newton* follow-up for validation is the backbone of a larger programme for the confirmation and redshift measurement of *Planck* SZ cluster candidates. The *Planck* collaboration has also been granted time on the following facilities: the ENO, the ESO/MPG 2.2 m and the Palomar telescopes. Observations with these facilities are ongoing or being processed. Some optical results from the ENO observations are presented together with the *XMM-Newton* results in this paper (Sect. 4.2 and A.1). Other early astrophysics results on clusters of galaxies are presented in Planck Collaboration (2011d,f,g,h).

We adopt a Λ CDM cosmology with $H_0 = 70 \text{ km s}^{-1} \text{ Mpc}^{-1}$, $\Omega_M = 0.3$ and $\Omega_\Lambda = 0.7$. The factor $E(z) = \sqrt{\Omega_M(1+z)^3 + \Omega_\Lambda}$ is the ratio of the Hubble constant at redshift z to its present day value. The quantities M_{500} and R_{500} are the total mass and radius corresponding to a total density contrast $\delta = 500$, as compared to $\rho_c(z)$, the critical density of the universe at the cluster redshift; thus $M_{500} = (4\pi/3) 500 \rho_c(z) R_{500}^3$. The quantity Y_X is defined as the product of $M_{g,500}$, the gas mass within R_{500} , and T_X , the spectroscopic temperature measured in the $[0.15-0.75] R_{500}$ aperture. The SZ signal is characterised by Y_{500} throughout. This quantity is defined as $Y_{500} D_A^2 = (\sigma_T/m_e c^2) \int P dV$. Here D_A is the angular-diameter distance to the system, σ_T is the Thomson cross-section, c the speed of light, m_e the electron rest mass; $P = n_e T$ is the pressure, the product of the electron number density and temperature, and the integration is performed over a sphere of radius R_{500} . The quantity $Y_{500} D_A^2$ is the spherically integrated Compton parameter and Y_{500} is proportional to the apparent magnitude of the SZ signal from within R_{500} .

Table 1: Observation log of the *XMM-Newton* validation follow-up. The 10 targets of the pilot programme are listed first. Column (1): *Planck* source name. Asterisked objects denote sources that were found to be multiple systems in X-rays. Column (2): Signal-to-noise ratio of the detection of the *Planck* cluster candidate in the version of the *Planck*-HFI maps available for each programme. Column (3)-(4): Right ascension and declination of the *Planck* source (J2000). Column (5)-(8): *XMM-Newton* observation identification number, filter used, on-time exposure and fraction of useful time after cleaning for periods of high background due to soft proton flares (see also Sec. 2.5). Column (9): Confirmed clusters are flagged. Those included in the ESZ sample (Planck Collaboration 2011d) are also identified.

Name	S/N	RA_{SZ} (deg)	DEC_{SZ} (deg)	OBSID	filter	t_{exp} (ks EPN)	Clean fraction (MOS/EPN)	Confirmed
PLCK G277.8-51.7	6.1	43.596	-58.964	0656200301	THIN	16.5	0.5/0.2	✓ ESZ
PLCK G334.8-38.0*	4.9	313.177	-61.202	0656200701	THIN	21.2	0.8/0.5	✓
PLCK G250.0+24.1	4.9	143.042	-17.647	0656200401	THIN	10.4	0/0	✓
PLCK G286.3-38.4	4.7	59.800	-72.067	0656200501	THIN	13.6	0.7/0	✓
PLCK G004.5-19.5	4.6	289.226	-33.509	0656201001	MED	10.0	1/0.6	✓
PLCK G214.6+36.9*	4.2	137.206	14.642	0656200101	THIN	17.6	0.7/0.7	✓
PLCK G070.8-21.5	4.1	321.410	19.941	0656200201	MED	25.4	0.4/0.1	...
PLCK G317.4-54.1	4.1	355.247	-61.038	0656200801	THIN	12.0	0.9/0.7	...
PLCK G226.1-16.9	4.0	93.139	-19.040	0656200601	THIN	10.0	0.7/0.4	...
PLCK G343.4-43.4	3.9	320.145	-53.631	0656200901	MED	10.0	0.9/0.9	...
PLCK G287.0+32.9	10.2	177.714	-28.074	0656201201	THIN	10.0	0.7/0.4	✓ ESZ
PLCK G171.9-40.7	10.7	48.231	8.380	0656201101	THIN	10.0	1/0.8	✓ ESZ
PLCK G285.0-23.7	8.3	110.805	-73.457	0656201401	THIN	10.0	0.9/0.6	✓ ESZ
PLCK G271.2-31.0	8.3	87.315	-62.087	0656201301	THIN	10.0	1/1	✓ ESZ
PLCK G262.7-40.9	7.4	69.624	-54.309	0656201601	THIN	14.7	1/0.9	✓ ESZ
PLCK G308.3-20.2*	7.4	229.588	-81.523	0656201501	THIN	10.0	1/1	✓ ESZ
PLCK G337.1-26.0*	6.4	288.583	-59.513	0656201701	THIN	13.7	1/1	✓ ESZ
PLCK G292.5+22.0	6.2	180.241	-39.889	0656201801	MED	13.2	0.6/0.5	✓ ESZ
PLCK G205.0-63.0	6.1	41.593	-20.527	0656201901	THIN	11.7	1/1	✓
PLCK G241.2-28.7	5.9	85.768	-36.022	0656202001	THIN	10.0	1/1	✓
PLCK G286.6-31.3	5.9	82.8430	-75.164	0656202101	THIN	10.0	0.7/0.3	✓ ESZ
PLCK G018.7+23.6	5.6	255.553	-1.004	0656202201	THIN	7.2	1/1	✓
PLCK G100.2-30.4	5.5	350.589	28.563	0656202301	THIN	10.0	0.9/0.7	✓
PLCK G272.9+48.8	5.1	173.310	-9.479	0656202601	THIN	11.7	0/0	✓
PLCK G285.6-17.2	5.2	130.956	-71.190	0656202501	THIN	10.0	1/1	✓ ESZ

2. The *XMM-Newton* validation follow-up of *Planck* cluster candidates

2.1. The *Planck* survey

Planck (Tauber et al. 2010; Planck Collaboration 2011a) is the third generation space mission to measure the anisotropy of the CMB. It observes the sky in nine frequency bands covering 30–857 GHz with high sensitivity and angular resolution from 31' to 5'. The Low Frequency Instrument (LFI; Mandolesi et al. 2010; Bersanelli et al. 2010; Mennella et al. 2011) covers the 30, 44, and 70 GHz bands with amplifiers cooled to 20 K. The High Frequency Instrument (HFI; Lamarre et al. 2010; Planck HFI Core Team 2011a) covers the 100, 143, 217, 353, 545, and 857 GHz bands with bolometers cooled to 0.1 K. Polarization is measured in all but the highest two bands (Leahy et al. 2010; Rosset et al. 2010). A combination of radiative cooling and three mechanical coolers produces the temperatures needed for the detectors and optics (Planck Collaboration 2011b). Two Data Processing Centres (DPCs) check and calibrate the data and make maps of the sky (Planck HFI Core Team 2011b; Zacchei et al. 2011). *Planck*'s sensitivity, angular resolution, and frequency coverage make it a powerful instrument for galactic and extra-

galactic astrophysics as well as cosmology. Early astrophysics results are given in Planck Collaboration, 2011h–z.

2.2. Blind detection of SZ clusters in *Planck*

The blind search for clusters in *Planck* data relies on a Multi-Matched Filter (MMF) approach (Melin et al. 2006)². This detection algorithm operates on all-sky maps divided into a set of overlapping square patches, using simultaneously the 6 frequency maps of the HFI instrument (Planck Collaboration 2011d). The SZ spectral signature and the universal pressure profile derived by Arnaud et al. (2010) are used as spectral and spatial templates, respectively, within the algorithm. In such a blind search, the position, the characteristic scale of the profile (i.e., $\propto R_{500}$) and the amplitude (i.e., $\propto Y_{500}$) are left free, being optimised by the MMF algorithm. In practice the algorithm is run in an iterative way: after a first detection run to locate candidates, consecutive runs on sky patches centred on the candidate positions refine the estimated signal-to-noise ratio (S/N) and other properties.

² Results from other methods are cross-compared to those from the MMF search, including from the PowellSnakes-based algorithm (Carvalho et al. 2009).

Cluster candidates then undergo a validation process, extensively described in [Planck Collaboration \(2011d\)](#). This process includes internal quality checks (e.g., map artefacts, cross-comparison between detection algorithms, SZ spectral signature, astrophysical contamination by galactic dust, point sources or CMB) and cross-correlation with ancillary data and catalogues allowing known clusters to be identified. This process produces a list of new *Planck* SZ cluster candidates above a given S/N threshold ($S/N = 4$ in this work).

2.3. *XMM-Newton* target selection

From the list of new potential clusters detected as SZ sources in the *Planck* survey, we selected 25 targets in a two step process:

1. Pilot programme: 10 targets were selected on the basis of the *Planck* survey as it stood at the end of October 2009, i.e., ~ 62 per cent sky coverage. These targets were explicitly chosen to sample the lower range of signal-to-noise ($4 < S/N < 6$) in order to better characterise the nature and quality of the SZ signal.
2. High S/N programme: a further 15 targets were chosen in the spring of 2010 when the first full-sky coverage was close to completion (99.5 per cent sky coverage). In contrast to the pilot programme, here we focused on high-significance SZ sources ($S/N > 5$) and selected candidates starting from the highest S/N .

In both cases the selection process was intimately linked to the *Planck*-HFI data Time Ordered Information processing status, calibration, attitude and map versions (as of Dec 7, 2009 and April 19, 2010 for the two programmes respectively). The choice of targets was also constrained by their *XMM-Newton* visibility in a period of 2-3 months following their submission to the Science Operations Centre. For both programmes, maps and spectra of each potential target were visually inspected, including reprocessing with aperture photometry methods. Cross correlation with the *RASS* Bright Source Catalogue (*RASS*-BSC, [Voges et al. 1999](#)) and Faint Source Catalogue (*RASS*-FSC, [Voges et al. 2000](#)) was undertaken. For the two targets of the pilot programme falling in the SDSS area, we ran a dedicated algorithm to search for galaxy overdensities ([Fromenteau et al. 2011](#)), allowing us to track significant concentrations of matter down to $z \sim 0.6$. These two targets were chosen to test the SDSS based confirmation at high z . The first candidate was not confirmed (see [Fromenteau et al. \(2011\)](#) for discussion); the other candidate is discussed in [Sec. 7.2.1](#). Detailed searches in *XMM-Newton*, *Chandra* and *Suzaku* observatory logs were also undertaken in order to avoid duplication of performed or accepted observations with similar facilities.

Six of the ten pilot programme targets were confirmed (see [Table 1](#)); two of these are multiple systems. Taking into account the result of the pilot project, for the second programme we set a lower S/N threshold of $S/N = 5$ and refined and strengthened the selection criteria. In particular, we required that the source be independently detected by at least two of the three blind detection methods, and more quality flags were considered. The internal checks were very similar to those defined for constructing the Early SZ (ESZ) sample ([Planck Collaboration 2011d](#)), which benefit from the result of the *XMM-Newton* Pilot programme. We also performed a search for emission in the *RASS* hard band images, looking for X-ray signatures beyond those recorded in the *RASS* source catalogues. However, *RASS* information never took precedence over the internal *Planck* quality flags. Note that two of the false candidates of the Pilot

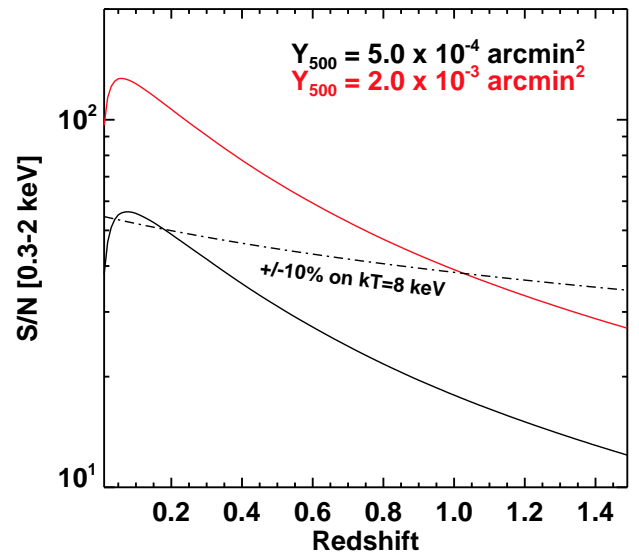


Fig. 1: Sensitivity of *XMM-Newton* observations to typical *Planck* SZ sources. The expected signal-to-noise ratio (S/N) of the cluster detection in the [0.3–2] keV energy band with the EPIC camera is plotted as a function of redshift for an exposure time of 10 ksec assuming two typical SZ fluxes. See text for details of the model assumed to convert SZ to X-ray flux and count rate. The dash-dotted line indicates the S/N required for ten per cent uncertainty on the temperature measurement of an 8 keV cluster.

programme (PLCK G343.4-43.4 and PLCK G226.1-16.9) were associated with a *RASS*-FSC source that *XMM-Newton* subsequently revealed to be several point sources (see [Sec. 3.2](#)). Thus association with an *RASS* source alone is not sufficient for cluster candidate confirmation.

The ESZ sample ([Planck Collaboration 2011d](#)) consists of a high signal-to-noise list of 189 clusters and cluster candidates based on data from the first 10 months of the *Planck* survey. Ten of the 21 objects presented in the present paper passed the ESZ selection criteria (i.e. primarily $S/N \geq 6$) and are thus part of the ESZ sample released to the community in January 2011. The original S/N of their detection in the *Planck* maps is given in [Table 1](#), whereas the S/N values provided in [Table 2](#) are derived from the 10 month *Planck* maps on the basis of which the ESZ sample was constructed.

2.4. Observation setup

As discussed by [Scharf \(2002\)](#), the optimum energy band for *XMM-Newton* cluster detection is the soft energy band, for which the signal-to-noise ratio reaches a maximum. We calculated expectations for *XMM-Newton* sensitivity in that band for two representative values of the SZ flux from within R_{500} : $Y_{500} = 5 \times 10^{-4} \text{ arcmin}^{-2}$ and $Y_{500} = 2 \times 10^{-3} \text{ arcmin}^{-2}$. In each case, the expected cluster luminosity L_{500} for various redshifts was estimated using the $L_{500} - D_A^2 Y_{500}$ relation of [Arnaud et al. \(2010\)](#), assuming self-similar evolution. We then derived the corresponding total *XMM-Newton* count rates, CR , in the [0.3–2] keV band for the EPIC MOS and pn camera ([Turner et al. 2001](#); [Strüder et al. 2001](#)), using *xspec* ([Arnaud 1996](#)) to simulate an absorbed thermal model (assuming $kT = 7 \text{ keV}$, $N_H = 2 \times 10^{20} \text{ cm}^{-2}$), convolved with the instrument response. The corresponding angular extent θ_{500} was estimated from the $L_{500} - M_{500}$ relation of [Pratt et al. \(2009\)](#). The signal-to-noise ratio of the detec-

tion is then given by $S/N = (CR \sqrt{T_{\text{exp}}}) / (\sqrt{CR + (2 CR_{\text{bkg}} S_R)})$, where T_{exp} is the exposure time, CR_{bkg} is the background count rate, and $S_R = 4\pi \theta_{500}^2$ is the integration area in square arc minutes. We assumed a [0.3–2] keV band background count rate of $CR_{\text{bkg}} = 4.5 \times 10^{-3}$ counts s^{-1} arcmin $^{-2}$, as estimated from the blank sky backgrounds of [Read & Ponman \(2003\)](#). Figure 1 shows the resulting S/N of an *XMM-Newton* detection as a function of redshift.

Since the goal of the *XMM-Newton* observations is confirmation of new *Planck* SZ cluster candidates, the nominal observing time was set to 10 ksec (net pn camera time) per target. Such a snapshot observation is sufficient to detect the cluster – if real – at better than 10σ up to $z = 1.5$ (Fig 1). The nominal setup used the THIN filters (unless optical loading had to be avoided) and EFF mode for the pn camera. The boresight was optimised to avoid camera gaps.

2.5. *XMM-Newton* data reduction

We produced calibrated event lists using v10.0 of the *XMM-Newton* Science Analysis System (SAS). Observations were cleaned for periods of high background due to soft proton flares, PATTERN-selected and corrected for vignetting as described in [Pratt et al. \(2007\)](#). Point sources were identified from the small scales of wavelet-decomposed images in the [0.3–2] and [2–5] keV bands. These sources are excluded in the analysis of confirmed clusters, with exclusion radius matched to the PSF size (which varies across the detector).

Above ~ 2 keV the *XMM-Newton* background is dominated by particle events. We subtracted this background using a stacked event list built from observations obtained with the filter wheel in the CLOSED position, recast to the pointing position and renormalised using the count rate in the high energy band free of cluster emission. The remaining background (due to the cosmic X-ray background of unresolved AGN and Galactic emission) was estimated from the particle-background subtracted emission from an annulus beyond the cluster emission. For the spectral analysis, we modeled this background emission as arising from two thermal sources and an power-law source with index $\Gamma = 1.4$ taking into account the absorbing Galactic column density in the direction of the object (see, e.g., [De Luca & Molendi 2004](#)).

As Table 1 shows, the observations are of variable quality. In three cases the pn data were completely contaminated by soft proton flares and formally had no useful observing time. For two of these observations, the MOS data were completely contaminated too. In these instances, we used MOS data only (uncleaned in the last two cases). The power-law index in the background model was left free, which empirically produces a relatively good fit to the background spectrum. The spectroscopic results for these objects should be treated with caution.

Spectral fits were undertaken in the [0.3–10] keV energy range, after binning the spectra to a minimum of 25 counts per bin and excluding background fluorescence line regions. The cluster component was modelled with an absorbed MEKAL model with an hydrogen column density fixed at the 21 cm value from [Dickey & Lockman \(1990\)](#), except for PLCK G286.3–38.4, PLCK G308.3–20.2 and PLCK G018.7+23.6, which were found to have a significantly higher absorption. The reference solar abundances are from the data of [Anders & Grevesse \(1989\)](#).

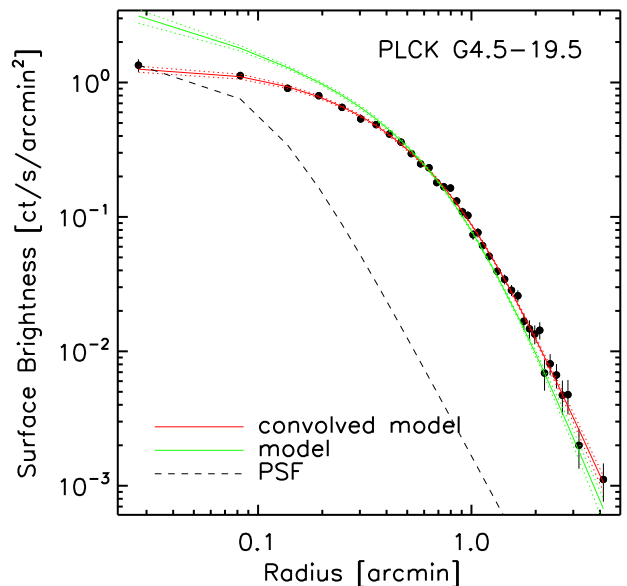


Fig. 2: Surface brightness profile of PLCK G4.5–19.5, the highest- z cluster of the sample, as measured with *XMM-Newton*. The data of the MOS1&2 and pn camera in [0.3–2.] keV energy band are combined. Green line: best fitting model (see text). Red line: best fitting model convolved with the Point Spread Function (PSF) of *XMM-Newton*. Dashed line: on axis XMM/PSF, normalised to the central intensity. The source is clearly extended.

3. *XMM-Newton* validation: methods and outcome

The observations were completed by the end of October 2010. The median clean pn observation time is 7 ksec (Table 1). Out of 25 targets, 21 are confirmed as X-ray extended sources. The confirmation status of each *XMM-Newton* observation is given in Table 1.

3.1. Confirmed cluster candidates

Our procedure for candidate cluster confirmation consists of identifying an extended X-ray source coincident with the *Planck* SZ source and checking that the SZ and X-ray properties are consistent. Generally, a candidate cluster (or supercluster) is clearly visible within $5'$ of the *Planck* candidate position, in which case we simply have to confirm the X-ray source extent. This is achieved by comparing the surface brightness profile extracted in the [0.3–2.0] keV band with the *XMM-Newton* Point Spread Function. A typical cluster β -model with a cusp (Eq. 2 in [Pratt & Arnaud 2002](#)) is also fitted to the data. Figure 2 shows this comparison for the highest- z confirmed extended source.

Seventeen systems show extended emission from a single source and are confirmed as new clusters of galaxies. Using the Fe K line in the X-ray spectrum we have estimated a redshift for all these objects, albeit with large uncertainties in some cases (see Sec. 4.1). We have also calculated the Y_X parameter (Sec. 5.1). A final check of the candidate confirmation is the good agreement found between the measured SZ signal and that expected from the Y_X value (Sec. 5.1).

A further two confirmed candidates were revealed to be double systems, one of which is a projection of two independent clusters at different redshifts. More unexpected are two further newly-discovered triple systems. All of the confirmed candidates revealed by *XMM-Newton* to be multiple clusters are discussed in more detail in Sec. 7.

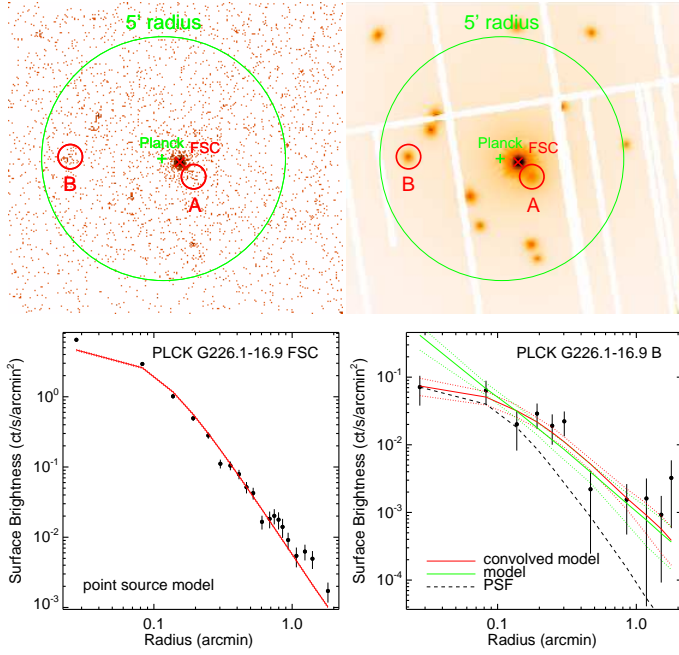


Fig. 3: Illustration of the results of the *XMM-Newton* validation procedure for a false candidate, PLCK G226.1-16.9. Top panels: Raw MOS image (left) and reconstructed pn image (right) in the soft band. The circle of 5' in radius centred on the *Planck* position (green cross) corresponds to the conservative position error box. The RASS-FSC source is clearly detected (red cross) as a point source: its surface brightness profile (black points in left bottom panel) is well fitted by the *XMM-Newton* PSF (red line). Two extended sources labelled A and B are also detected. Bottom right panel: same as Fig. 2 for source B.

The *XMM-Newton* images of confirmed single and double systems are shown in Fig. 5. In each panel, the *Planck* source centre position is marked with a cross; in addition, when relevant a red/green plus sign shows the associated RASS-FSC/BSC source.

3.2. False cluster candidates

In some cases a source is not clearly visible and then the relatively large FWHMs of the HFI beams ($\sim 4.5 - 9.5$; [Planck HFI Core Team 2011b](#)) complicate source search and confirmation. For these observations we employ the approach described in [Šuhada et al. \(2010\)](#), applying the *XMM-Newton*–SAS source detection algorithms `ebxdetect` and `emldetect` to determine whether an extended source lies within the *Planck* beam. In brief, images are produced in the 0.35–2.4 keV band and `ebxdetect` is first run in local mode, where the background is estimated locally for each source. Sources found in this first step are then excised, leaving an image suitable for background estimation. The background image is modeled with two components, a vignettted component to represent the X-ray background, and a non-vignettted component to represent the particle and instrumental background. The model is based on a linear combination of two templates based on vignettted and non-vignettted exposure maps, and is fit to the source-subtracted image. We then re-run `ebxdetect` with this model background. All sources found in this step are then analysed with the maximum likelihood (ML) task `emldetect`, that analyses each source by fitting with a 2D King function convolved with the PSF. The log of

the detection likelihood of each source as defined in the code is $\text{det_ml} = -\ln P_{\text{rand}}$, where the latter is the probability of the observed counts arising from Poisson fluctuations. We set the minimum $\text{det_ml} = 6$, corresponding to a $\gtrsim 3\sigma$ detection³. In addition to the above, we also searched for possible extended sources using visual inspection of a wavelet-smoothed image.

Figure 3 illustrates application of the method for the false source PLCK G226.1-16.9. This candidate was the lowest S/N candidate of the Pilot sample ($S/N = 4.0$) and close to a RASS-FSC source, which may have been the cluster counterpart. The top panel shows the raw *XMM-Newton* image and the reconstructed EPIC pn ML source image.

The RASS-FSC source located at $0.8'$ from the *Planck* source is clearly detected with *XMM-Newton* (red plus sign in the top panels). The surface brightness profile is well fitted by a point source convolved with the *XMM-Newton* PSF (bottom left panel). The source spectrum is clearly a power law, and thermal emission from a 0.3 solar abundance ICM is rejected at high confidence at all redshifts and temperatures. This source is most likely an AGN and is definitively not the *Planck* counterpart.

The source list produced by the ML method includes two potentially extended sources, only one of which within 5' of the *Planck* source position (source labelled A in the Figure). It is located $\sim 0.8'$ from the RASS-FSC source position and is much fainter, showing the capability of *XMM-Newton* to separate sources. The source has an estimated $[0.35\text{--}2.4]$ keV flux of $\sim 2 \times 10^{-14}$ erg/cm²/s, which is more than 5 times lower than that expected from the SZ source even if located at $z \sim 1.5$. Furthermore its extent (although not well constrained) is small and it is perfectly coincident with a 2MASS galaxy. This source again could not be the *Planck* counterpart. Finally, from a wavelet-smoothed image, there was a hint that another source, located $3.5'$ away from the *Planck* candidate position, was extended, although was not classified as such with the ML method (source labelled B). We extracted its profile and confirmed it as extended, although the extent is not very significant (bottom right panel of Fig. 3). However, its flux is half that expected from the observed *Planck* flux even for a cluster at $z = 1.5$. Nevertheless, in view of possible errors in the *Planck* position, we re-analysed the *Planck* data by re-extracting the signal exactly at the position of the source. The SZ detection was no longer significant, leading us to conclude that source B was definitively not the counterpart to the *Planck* candidate. From the *XMM-Newton* observation we thus concluded that this *Planck* candidate was a false detection.

4. Redshift estimate

4.1. *XMM-Newton* estimates

The ICM has a typical abundance of 0.3 times solar, implying that metals are present in large amounts (see [Balestra et al. 2007](#); [Leccardi & Molendi 2008](#); [Maughan et al. 2008](#), for recent work on metals in the cluster context). The spectroscopic sensitivity of *XMM-Newton* allows the measurement of the intensity and centroid energy of the strongest line emission, namely the Fe K and Fe L line complexes (respectively found at $E \sim 1$ and $E \sim 6.4$ keV at $z = 0$). As a consequence the Fe line emission can be used to constrain the cluster redshift. We have thus searched for their signature in the *XMM-Newton* observations, focusing mainly on the Fe K complex, which is about 10 times as strong

³ see <http://xmm.esac.esa.int/\sas/current/doc/emldetect/node3.html> for more details

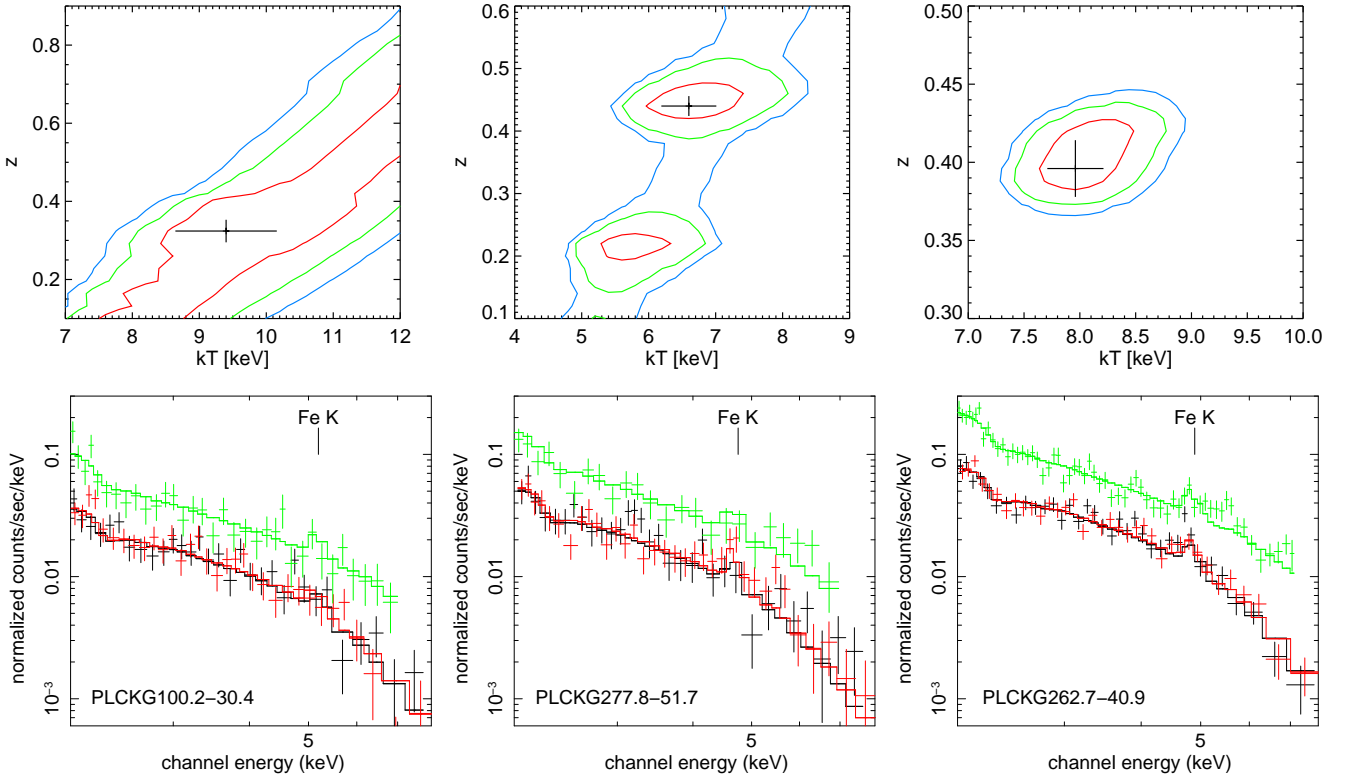


Fig. 4: (*Top row*) Redshift determination from *XMM-Newton* spectroscopy in the kT – z plane. Red, green and blue contours trace 68, 95 and 99.9 per cent confidence levels respectively. The black error point shows the final best-fitting spectral results with associated statistical errors. (*Bottom row*) EPIC MOS1&2 (red and black points) and pn (green points) spectra. Only the data points above 2 keV are shown for clarity but data down to 0.3 keV are used in the spectral fitting. The line is the thermal model for the best-fitting redshift. The position of the redshifted Fe K line is marked. From left to right the figures are for sources PLCK G100.2-30.4, PLCK G277.8-51.7 and PLCK G241.2-28.7.

as any other line emission in the ICM. A clear detection then provides an estimate of the X–ray redshift z_{Fe} .

The intrinsic spectral resolution of *XMM-Newton* is $\Delta E \sim 150$ eV at 6.4 keV and $\Delta E \sim 100$ eV at 3.2 keV; the energies here correspond to the Fe K complex centroid energy for a cluster at a redshift of $z = 0$ and $z = 1$, respectively. Such resolution allows centroid determination to typically 10–15 eV for high quality spectra, of the same magnitude as the systematic uncertainty of the calibration of the energy reconstruction (about 5 eV and 10 eV in the central CCD of the MOS and pn camera, respectively). The overall energy uncertainty would yield a typical corresponding redshift uncertainty of $\Delta z \sim 0.002$. In practice, the limiting factor affecting the accuracy of the redshift determination is the statistical uncertainty of the spectrum, which is linked to the observation duration and overall quality (background conditions). Furthermore, *Planck*-detected clusters are mostly massive, hot objects with low Fe line equivalent widths (Rothenflug & Arnaud 1985). This makes z_{Fe} determination more difficult than for cooler objects.

To estimate the redshift using *xspec* we first perform a spectral fit of the region corresponding to the maximum significance of the detection (defined from the surface brightness profile in the soft band), with the redshift as one of the free parameters. The abundance is left free to fit within a typical cluster range (0.2–0.6 times solar). From this starting point we investigated the χ^2 in the kT – z_{Fe} plane using a regular grid. The best fitting kT and z_{Fe} values were then recovered from a simple maximum likelihood analysis, whereupon these best fitting values are used as input for a final spectral fit. When a two- or three-peak degeneracy appeared in the kT – z_{Fe} plane, we checked the various

potential z_{Fe} values and chose the redshift giving the best spectral fit as defined by the χ^2 and the null probability hypothesis.

This redshift estimation process is illustrated by three cases in Fig. 4, the left panel showing a fully degenerate case, the middle panel a double-peak case and the right panel a well-constrained case. These redshifts are flagged with quality values 0, 1, 2, respectively, in Table 2.

4.2. Optical estimates

For three clusters, we have estimated the redshift either from existing optical archive observations or dedicated follow-up observations as part of the overall *Planck* cluster candidate validation programme. The most recent corresponds to telescope time acquired by the *Planck* consortium at the ENO telescope, Observatorio del Teide (Tenerife, Spain – AO 2009B and 2010A). The details of the observation setup and data processing can be found in Appendix A.1.

- PLCK G100.2-30.4. The source was observed in 4 bands (*griz*) with the CAMELOT camera at the 0.82-m IAC80 telescope. After data reduction, we derived a photometric redshift of $z_{\text{phot}} = 0.38 \pm 0.04$ using the BPZ code (Benítez 2000). This estimate is compatible within 3σ with the z_{Fe} derived from the X-ray spectroscopy.
- PLCK G285.0-23.7. We reduced the ESO NTT/SUSI2 archive images for this object, deriving a red-sequence redshift of $z_{\text{phot}} = 0.37$. This estimate is in good agreement with the X-ray spectroscopic redshift $z_{\text{Fe}} = 0.39$.

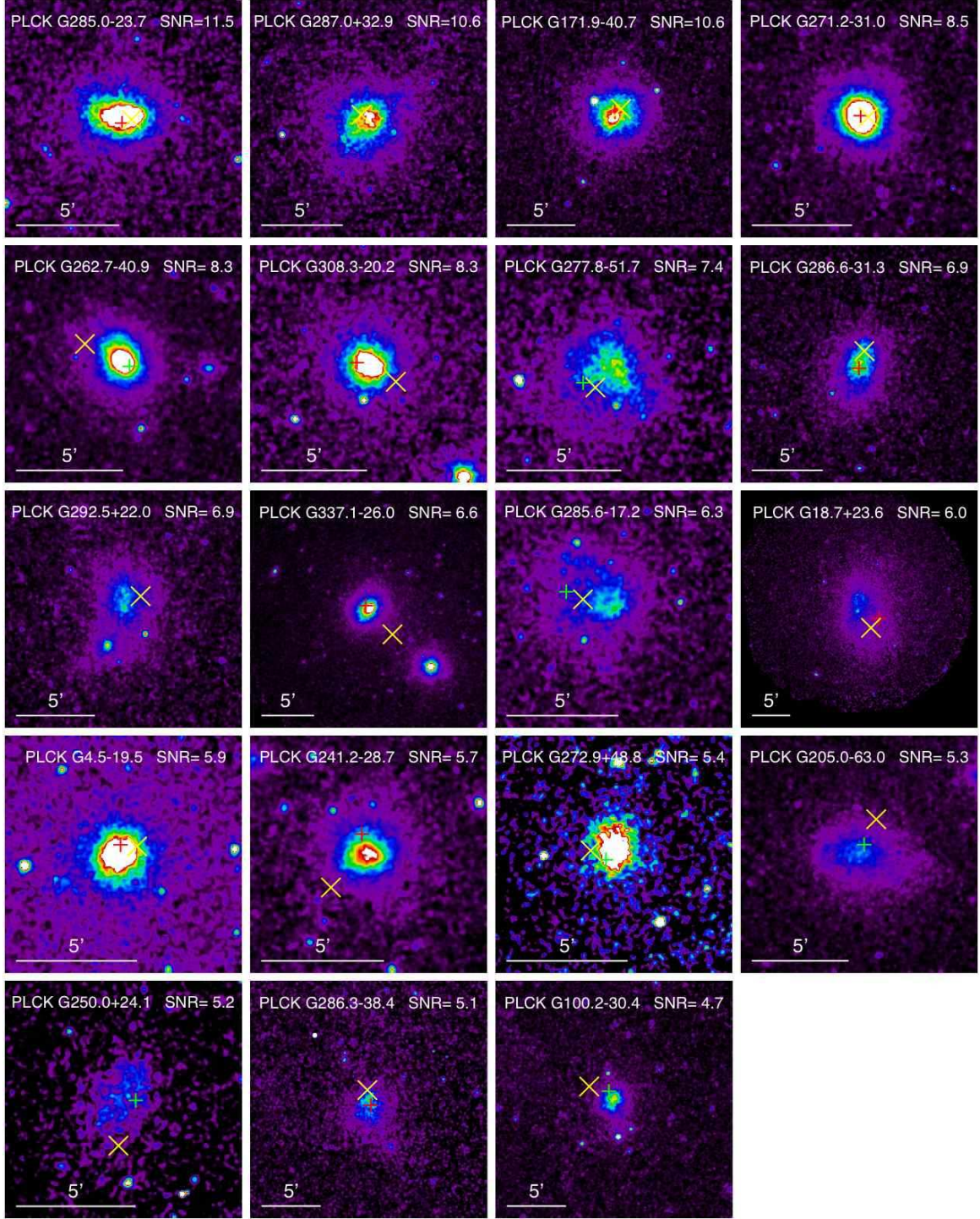


Fig. 5: *XMM-Newton* images of all confirmed cluster candidates, except for the two triple systems, in the [0.3–2] keV energy band. The observations of PLCK G272.9+48.8 and PLCK G250.0+24.1 suffer from high background that has only been crudely subtracted. Image sizes are $3\theta_{500}$ on a side, where θ_{500} is estimated from the $M_{500}-Y_X$ relation (see Sec. 5.1). Images are corrected for surface brightness dimming with z , divided by the emissivity in the energy band, taking into account galactic absorption and instrument response, and scaled according to the self-similar model. The colour table is the same for all clusters, so that the images would be identical if clusters obeyed strict self-similarity. The majority of the objects show evidence for significant morphological disturbance. A yellow cross indicates the *Planck* position and a red/green plus sign the position of a RASS-BSC/FSC source.

– PLCK286.3-38.4. ESO NTT/SUSI2 images and NTT/EMMI spectroscopic archive data targeting the X-ray source RXJ0359.1-7205 were available. From a poor quality NTT/EMMI spectrum, we extracted a redshift of $z_{\text{spec}} = 0.307 \pm 0.003$, backed-up by the presence of

two absorption line features ($H\beta$ and Mg-I). Again this value agrees well with the X-ray spectroscopic redshift of $z_{\text{Fe}} = 0.31$.

Table 2: X-ray and SZ properties of the confirmed *Planck* sources. Column (2): Signal-to-noise ratio derived from the 10-month *Planck* maps on the basis of which the ESZ sample was constructed. Column (3)–(8): Right ascension and declination of the peak of the X–ray image (J2000). Column (9): redshift from X–ray spectral fitting. Column (10): optical redshift. Column (11) Quality flag for the X–ray redshift measurement. Column (12): Total EPIC count rates in the [0.3–2] keV band, within the maximum radius of detection given in column (13). Column (14)–(20): R_{500} is the radius corresponding to a density contrast of 500, estimated iteratively from the M_{500} – Y_X relation (Eq. 1), where $Y_X = M_{g,500}T_X$ is the product of the gas mass within R_{500} and the spectroscopic temperature T_X , and M_{500} is the total mass within R_{500} . $L_{500,[0.1-2.4] \text{ keV}}$ is the luminosity in the [0.1 – 2.4] keV band and in the R_{500} aperture. Y_{500} is the spherically integrated Compton parameter measured with *Planck*, centred on the X–ray peak, interior to R_{500} as estimated with *XMM-Newton*.

Name	S/N	RA_X [h:m:s]	DEC_X [d:m:s]	z_{Fe}	z_{opt}	Q_z	CR [cts/s]	R_{det} [arcmin]	R_{500} [kpc]	T_X [keV]	$M_{gas,500}$ [$10^{14} M_\odot$]	Y_X [$10^{14} M_\odot \text{ keV}$]	Y_{500} [10^{-4} Mpc^2]	M_{500} [$10^{14} M_\odot$]	$L_{500,[0.1-2.4] \text{ keV}}$ [$10^{44} \text{ ergs}^{-1}$]
PLCK G285.0-23.7	11.5	07:23:18.4	-73:27:20.6	0.39	...	2	1.85±0.02	4.1	1216	6.98±0.74	1.23±0.04	8.62±1.28	1.27±0.35	7.71±0.50	16.91±0.27
PLCK G287.0+32.9	10.6	11:50:49.2	-28:04:36.5	0.39	...	1	2.68±0.01	6.8	1541	12.86±0.42	2.39±0.03	30.69±0.36	3.30±0.16	15.72±0.27	17.20±0.11
PLCK G171.9-40.7	10.6	03:12:57.4	08:22:10.3	0.27	...	2	2.19±0.03	5.3	1428	10.65±0.42	1.43±0.04	15.26±0.72	2.05±0.21	10.92±0.37	11.28±0.19
PLCK G271.2-31.0	8.5	05:49:19.5	-62:05:16.0	0.37	...	2	3.32±0.01	5.2	1212	7.94±1.23	1.02±0.04	8.08±1.03	1.02±0.17	7.47±0.70	18.95±0.16
PLCK G262.7-40.9	8.3	04:38:17.2	-54:19:25.1	0.39	0.54 ^(a)	2	1.72±0.02	5.6	1169	7.77±0.87	0.90±0.06	7.01±0.98	1.14±0.22	6.87±0.68	9.94±0.47
PLCK G277.8-51.7	7.4	02:54:16.7	-58:56:44.0	0.44	...	1	1.33±0.02	5.8	1172	6.37±0.84	1.26±0.02	8.01±0.57	1.70±0.20	7.32±0.38	9.46±0.07
PLCK G286.6-31.3	6.9	05:31:27.5	-75:10:41.2	0.21	...	2	1.82±0.04	4.6	1149	6.85±0.94	0.60±0.07	4.14±3.01	0.61±0.32	5.32±0.86	3.72±0.23
PLCK G292.5+22.0	6.9	12:01:05.3	-39:52:26.2	0.30	...	2	1.42±0.03	6.8	1336	9.82±0.84	1.17±0.04	11.49±1.33	1.45±0.24	9.25±0.60	5.46±0.09
PLCK G285.6-17.2	6.3	08:43:44.4	-71:13:13.7	0.35	0.37 ^(b)	1	0.69±0.02	4.4	1044	4.87±0.35	0.71±0.01	3.46±0.40	0.79±0.13	4.67±0.22	4.45±0.08
PLCK G18.7+23.6	6.0	17:02:21.3	-00:59:58.9	0.09	...	2	3.94±0.01	10.5	1034	4.63±0.32	0.39±0.02	1.80±0.32	0.32±0.17	3.42±0.22	1.21±0.05
PLCK G4.5-19.5	5.9	19:17:04.6	-33:31:21.9	0.54	...	2	1.29±0.02	4.8	1245	10.39±0.52	1.37±0.03	14.27±0.87	1.99±0.20	9.88±0.35	17.78±0.11
PLCK G241.2-28.7	5.7	05:42:56.8	-35:59:54.8	0.42	...	2	0.92±0.02	3.6	1065	6.08±0.32	0.75±0.02	4.58±0.39	0.79±0.11	5.37±0.20	6.72±0.12
PLCK G272.9+48.8	5.4	11:33:10.5	-09:28:52.2	0.40	...	2	0.66±0.01	3.7	1053	4.67±0.32	0.88±0.02	4.09±0.32	0.87±0.18	5.07±0.21	12.36±0.09
PLCK G205.0-63.0	5.3	02:46:25.8	-20:33:16.9	0.31	...	2	1.12±0.03	5.5	1111	6.06±0.39	0.72±0.02	4.38±0.30	0.83±0.09	5.37±0.21	3.89±0.08
PLCK G250.0+24.1	5.2	09:32:13.8	-17:38:06.7	0.40	...	0	0.18±0.02	3.8	1061	6.75±0.28	0.63±0.03	4.27±0.42	0.72±0.12	5.19±0.21	3.37±0.19
PLCK G286.3-38.4	5.1	03:59:10.2	-72:04:46.1	0.31	0.307±0.003 ^(c)	2	0.32±0.05	4.5	1064	5.60±0.14	0.62±0.01	3.48±0.08	0.80±0.06	4.72±0.08	4.07±0.02
PLCK G100.2-30.4	4.7	23:22:14.9	28:31:13.5	0.31	0.38±0.04 ^(d)	0	0.76±0.01	4.7	1128	9.03±0.30	0.53±0.02	4.76±0.29	0.45±0.14	5.63±0.22	3.36±0.08
PLCKG308.3-20.2	8.3
A	...	15:18:55.5	-81:30:30.1	0.48	...	2	1.06±0.01	3.9	1250	9.55±0.56	1.31±0.04	12.55±0.92	...	9.32±0.38	15.65±0.19
B	...	15:16:52.6	-81:35:50.0	0.48 ^(d)	...	-1	0.42±0.01	2.9	894	3.79±0.35	0.55±0.03	2.09±0.25	...	3.41±0.23	8.67±0.26
PLCKG337.1-26.0	6.6
A	...	19:14:37.7	-59:28:16.7	0.26	...	2	3.28±0.03	7.5	1177	6.16±0.23	0.86±0.01	5.30±0.25	...	6.05±0.16	8.95±0.07
b	...	19:13:51.4	-59:33:51.6	0.12	...	2	1.79±0.02	4.5	749	2.84±0.20	0.12±0.01	0.34±0.03	...	1.34±0.07	1.02±0.01
PLCKG214.6+36.9	5.0
A	...	09:08:49.5	14:38:29.4	0.45	0.45 ^(a)	2	0.38±0.01	4.3	767	3.46±0.26	0.25±0.01	0.85±0.09	...	2.08±0.12	3.03±0.07
B	...	09:09:02.1	14:39:41.7	0.45	0.46 ^(a)	1	0.11±0.01	2.3	750	4.16±0.75	0.18±0.01	0.76±0.18	...	1.94±0.26	1.03±0.06
C	...	09:08:51.4	14:45:55.3	0.45	0.45 ^(a)	-1	0.25±0.01	3.1	809	3.72±0.50	0.30±0.01	1.13±0.19	...	2.44±0.23	2.28±0.08
PLCKG334.8-38.0	4.1
A	...	20:52:16.8	-61:12:29.4	0.35 ^(d)	...	2	0.13±0.01	1.8	722	3.14±0.33	0.15±0.01	0.48±0.07	...	1.55±0.13	0.77±0.06
B	...	20:53:08.0	-61:10:35.3	0.35 ^(e)	...	-1	0.08±0.01	3.2	605	2.02±0.31	0.09±0.01	0.19±0.05	...	0.91±0.12	0.47±0.33
C	...	20:52:44.3	-61:17:24.5	0.35 ^(e)	...	-1	0.03±0.00	1.2	607	3.13±1.71	0.06±0.02	0.19±0.18	...	0.92±0.44	0.21±0.06

(a) Photometric redshift for ACT-CL J0438-5419 in Menanteau et al. (2010). (b) Photometric redshift. See Appendix A.1. (c) Spectroscopic redshift. (d) Redshift constrained from Fe L complex. (e) Redshift assumed to be identical to that of component A.

Finally, the source PLCK G262.7-40.9 appeared in publication as one of the ACT SZ optically-confirmed clusters (Menanteau et al. 2010) to be observed by *Chandra*, after scheduling it for observation with *XMM-Newton*. The reported photometric redshift is $z_{\text{phot}} = 0.54 \pm 0.05$, in disagreement with our X–ray-derived value of $z_{\text{Fe}} = 0.38$ at the 3σ level. Although slightly weak, the Fe K line is clearly seen in the X–ray spectrum (see Fig. 4 right panels). We thus adopt the X–ray estimate. However, optical spectroscopic observations are clearly needed to confirm the cluster redshift. All compiled and derived optical redshifts are reported in column z_{opt} in Table 2.

5. Physical parameter estimates of confirmed clusters

5.1. *XMM-Newton* data

For all single clusters (17 systems) or obvious sub-components in double and triple systems (4 objects), the X–ray peak position was taken to be the (sub-)cluster centre. For these systems we undertook a more in-depth analysis assuming that a spherically symmetric approximation is appropriate.

Surface brightness profiles, centred on the X–ray peak, were extracted in the [0.3–2] keV band in $3'' \times 3$ bins. Deprojected, PSF-corrected gas density profiles were then calculated using the method described in Croston et al. (2008). Global cluster parameters were then estimated self-consistently within R_{500} via iteration about the M_{500} – Y_X relation of Arnaud et al. (2010, see also Pratt et al. 2010), viz.,

$$E(z)^{2/5} M_{500} = 10^{14.567 \pm 0.010} \left[\frac{Y_X}{2 \times 10^{14} M_\odot \text{ keV}} \right]^{0.561 \pm 0.018} h_{70}^{-1} M_\odot, \quad (1)$$

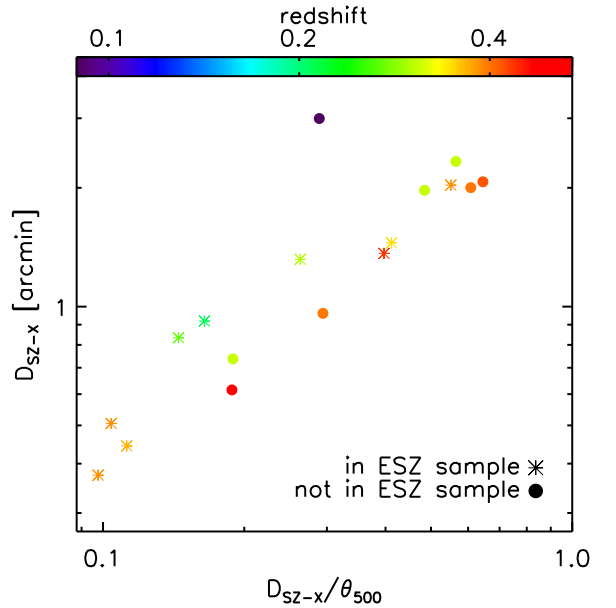


Fig. 6: Distance of blind SZ position to X–ray position, $D_{\text{SZ-X}}$, as a function of $D_{\text{SZ-X}}$, normalised to the cluster size $\theta_{500,X}$ for single confirmed systems. The clusters are colour-coded according to redshift. Note that the offset is typically less than $2'$ and always less than θ_{500} .

assuming standard evolution. In addition, the X–ray luminosity in the [0.1 – 2.4] keV band interior to R_{500} , $L_{500,[0.1-2.4] \text{ keV}}$ was calculated as described in Pratt et al. (2009). All resulting X–ray properties are summarized in Table 2. Errors include only sta-

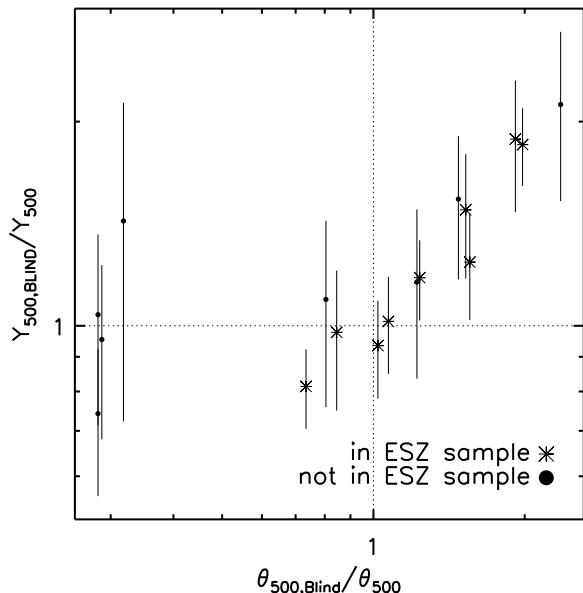


Fig. 7: Comparison of the *Planck* blind and X-ray constrained Y_{500} measurements for single confirmed systems (see text, Sec. 5.2). The ratio is correlated with the ratio of the corresponding characteristic size, θ_{500} .

tistical uncertainties. We did not attempt to include systematic errors due to redshift uncertainty or high background level; such estimates are beyond the scope of the paper. The results for this sample are not used for quantitative statistical study (e.g. derivation of scaling laws), which would require redshift confirmation (sources with z flag of 0 or 1) and deeper *XMM-Newton* observations.

The X-ray position for single systems is compared to the *Planck* position in Fig. 6. The offset behavior is similar to that observed for known clusters in the ESZ sample (see Planck Collaboration 2011d, for discussion). Except for the outlier PLCK G18.7+23.6, the positional offset is less than $2'$ and is clearly dominated by *Planck* reconstruction error which peaks at that value. A physical offset is also expected, especially for merging clusters. Such an offset would contribute less with increasing z as it would be less and less resolved. The small residual systematic variation of the offset with z , for $z > 0.2$, suggests that physical offsets may indeed slightly contribute. This is likely to be the case for PLCK G18.7+23.6, a highly disturbed object at $z = 0.09$, the lowest z of the sample, and which has an offset of $3'$ corresponding to $0.3R_{500}$. In all cases, the offset remains smaller than θ_{500} or the cluster extent (see also Fig. 5).

5.2. *Planck* refined Y_{SZ} estimate

The SZ signal extraction procedure is described in detail in Planck Collaboration (2011d). It consists of applying multi-frequency matched filters to the data that maximally enhance the signal-to-noise ratio of an SZ cluster source by optimally filtering the data. As shown in Planck Collaboration (2011d), SZ fluxes derived using this method can be significantly overestimated due to an over-estimation of the cluster size θ_{500} .

We can optimise the SZ photometry of the clusters presented here by using the X-ray estimate of the cluster position and size θ_{500} , derived from R_{500} measured using the M_{500} - Y_X relation as detailed in Sect. 5.1. For each cluster in the sample, we thus re-ran the SZ flux extraction, calculating Y_{500} with the X-ray po-

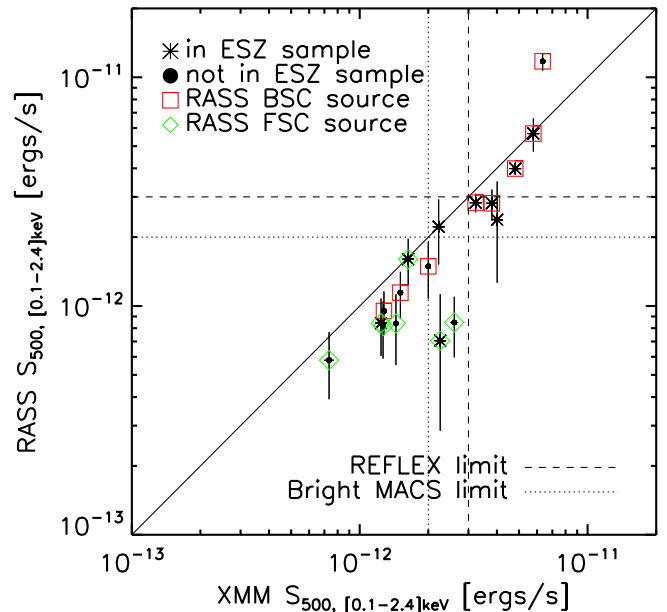


Fig. 8: Unabsorbed *RASS* flux versus *XMM-Newton* flux for the 17 confirmed single-component clusters. The [0.1–2.4] keV flux is measured within an aperture of θ_{500} . Clusters coincident with a *RASS*-BSC or a *RASS*-FSC source are marked with red squares and green diamonds, respectively.

sition and size fixed to the refined values derived from the high-quality *XMM-Newton* observation. The resulting Y_{500} values are listed in Table 2. In Figure 7, they are compared to the blind values as a function of the ratio of the *XMM-Newton* and blind characteristic size θ_{500} . For most cases the values are consistent within the errors; however, there is a clear trend of SZ flux overestimation with size overestimation, which can reach a factor of two (see detailed discussion of the cluster size–flux relation in Planck Collaboration 2011d and Planck Collaboration 2011g).

6. X-ray and SZ properties of newly detected clusters

In this Section we consider the seventeen systems confirmed as single-component clusters of galaxies, leaving aside the multiple systems which are discussed in the next Section.

6.1. *RASS* properties

We extracted $2^\circ \times 2^\circ$ count images in the [0.5–2.] keV hard band from the *RASS* data at the position of each cluster. We excised events associated with known *RASS*-BSC and *RASS*-FSC sources (Voges et al. 1999, 2000). We then carefully followed the methods described in Böhringer et al. (2000) and Reiprich & Böhringer (2002) to compute background corrected growth curves and estimate an associated detection radius, R_c . The background was estimated from an outer annulus with $15' < r < 90'$. When allowed by the quality of the growth curve, the count rate (CR) within R_{500} was either taken as CR ($r < R_c$) when $R_c < R_{500}$ or interpolated on the curve when $R_c > R_{500}$. In the case of low quality growth curves, we computed a direct integrated CR from the map within an aperture of R_{500} . Assuming the best fitting *XMM-Newton* spectral parameters for each cluster (i.e. z , temperature, abundance, galactic N_H) we derived the [0.1–2.4] keV band *RASS* flux.

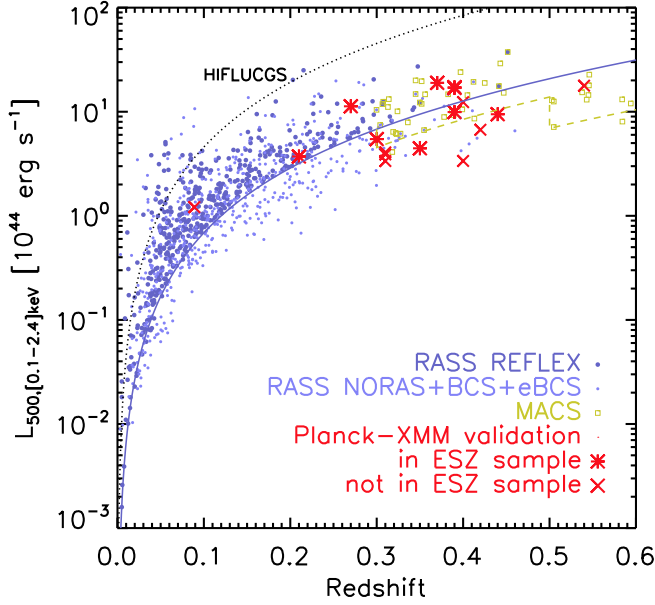


Fig. 9: The new SZ-discovered *Planck* clusters compared to clusters from the *ROSAT* All-Sky Survey catalogues in the L_X - z plane. The X-ray luminosity is that in the [0.1–2.4] keV band. Catalogues shown are the REFLEX, NORAS, BCS, eBCS and published MACS catalogues. The solid line is the REFLEX flux limit of 3×10^{-12} ergs s^{-1} cm^{-2} , similar to that of the BCS+eBCS catalogues. The dotted line is the HIFLUCGS flux limit of 2×10^{-11} ergs s^{-1} cm^{-2} and the dashed line is from the MACS flux limits. See Sec. 6.2 for references and details.

The *RASS* values are compared to the *XMM-Newton* values in Fig. 8. There is a good agreement taking into account the *RASS* statistical errors. The slight offset (< 20 per cent) is likely due to systematic errors linked to the *RASS* background estimate and/or calibration uncertainties. The very significant outlier at high flux is PLCK G18.7+23.6. A bright point source is present at the centre of this object (see Fig. 5) that cannot be excised in the *RASS* data and which contaminates the signal. From the *XMM-Newton* image (Fig. 5), the known *RASS*-FSC or *RASS*-BSC sources within the *Planck* error box for 15 of the candidates can be clearly identified with the clusters. Those are indicated in Fig. 8. The two clusters with no *RASS*-FSC or *RASS*-BSC association, PLCK G287.0+32.9 and PLCK G292.5+22.0 are in fact detected in *RASS*, but at low S/N (2 and 3, respectively; see also Sec. 6.4).

6.2. The L_X - z plane and comparison with *RASS* catalogues

In Figure 9, the new clusters are shown in the L_X - z plane, plotted together with the clusters from large catalogues based on *RASS* data outside the galactic plane: REFLEX (Böhringer et al. 2004) in the Southern sky; NORAS (Böhringer et al. 2000), BCS (Ebeling et al. 1998) and eBCS (Ebeling et al. 2000) in the Northern Sky. The NORAS is not flux limited. The REFLEX flux limit of 3×10^{-12} ergs s^{-1} cm^{-2} is shown. It is similar to that of the eBCS+BCS limit of 2.8×10^{-12} ergs s^{-1} cm^{-2} . Also shown are clusters from the published catalogues of the MACS survey with their corresponding flux limit. MACS is based on the *RASS*-BSC but in contrast to the above surveys, the X-ray extent of the *RASS* source is not a selection criterion, allowing more distant (but massive) clusters to be found (Ebeling et al. 2001). Published MACS catalogues are the $z > 0.5$ catalogue (Ebeling et al. 2007) and the $0.3 < z < 0.5$ brightest cluster catalogue

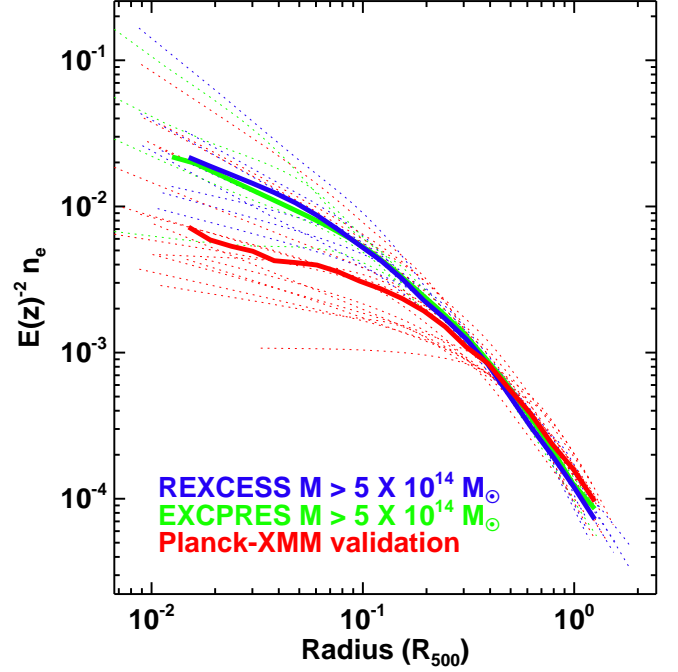


Fig. 10: Scaled density profiles of the new *Planck* SZ clusters compared to those of similar mass systems from the representative X-ray samples REXCESS (Böhringer et al. 2007) and EXCPRES (Arnaud et al., in prep.). R_{500} is estimated from the M_{500} - Y_X relation of Arnaud et al. (2010). Thick lines show the mean profile of each sample. The density profiles of the *Planck* SZ-selected clusters are on average shallower than those of the X-ray-selected clusters of the same mass.

(Ebeling et al. 2007, hereafter bright MACS). Luminosities plotted in Fig. 9 are the homogenised values given in the MCXC (Piffaretti et al. 2010).

The present sample of new *Planck*-detected systems spans a redshift range of $0.1 \lesssim z \lesssim 0.6$, with 15 out of 17 clusters above $z = 0.25$, a medium-distant redshift region of the L_X - z plane that is sparsely-populated by the *RASS* catalogues. As a consequence, our current sample has X-ray luminosities well below the flux limit of HIFLUCGS (Reiprich & Böhringer 2002) and REFLEX-DXL (Zhang et al. 2006), two high-luminosity X-ray selected samples that stand as the counterparts to our present high S/N SZ sample. The closest sample in X-ray luminosity and redshift to the new *Planck* clusters are the MACS clusters, although the *Planck* clusters go to lower luminosity.

Most of the new *Planck* clusters naturally fall below the REFLEX flux limit or, equivalently, the BCS+eBCS limit in the North. However, three clusters lie well above this limit: PLCK G18.7+23.6, PLCK G171.9-40.7, PLCK G271.2-31.0, in order of decreasing X-ray flux (Fig. 8 and Fig. 9). As discussed above, PLCK G18.7+23.6 at $z = 0.09$ has a very bright central source and very diffuse ICM emission. It may have been misclassified as a point source. PLCK G271.2-31.0 simply falls in the Large Magellanic Cloud LMC2 region, which was excluded in the REFLEX survey (see Böhringer et al. 2001, Table 1). However, PLCK G171.9-40.7 at $z = 0.27$ has a flux of 5.7×10^{-12} ergs s^{-1} cm^{-2} (from fully consistent *ROSAT* and *XMM-Newton* measurements), and is a northern sky cluster that fulfills the BCS flux and sky position criteria. Thus *a priori*, it should have been included in that survey. Finally, six new clusters at $z \geq 0.3$ are above the MACS flux limit. Of these, four are not associated with a *RASS*-BSC source and so could not be

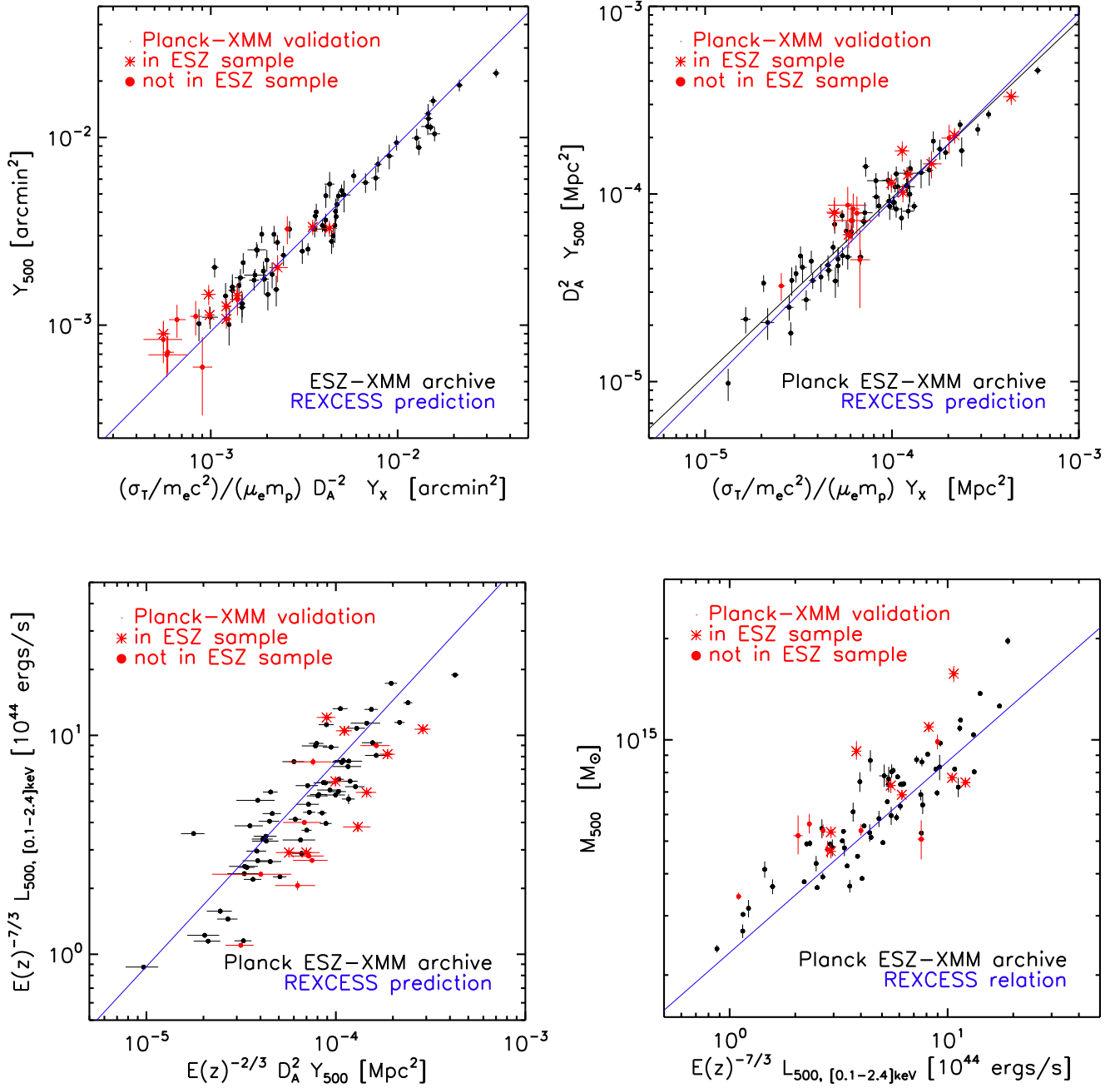


Fig. 11: Scaling relations for the 17 new confirmed single-component clusters (red symbols). Black points show clusters in the *Planck*-ESZ sample with *XMM-Newton* archival data as presented in [Planck Collaboration \(2011g\)](#). The solid black line denotes the corresponding scaling relation fits in each panel. The blue lines in the top and bottom right panels denote the predicted Y_{500} scaling relations from the REXCESS X-ray observations ([Arnaud et al. 2010](#)). The blue line in the bottom left panel is the Malmquist bias corrected $M-L$ relation from REXCESS sample ([Pratt et al. 2009](#); [Arnaud et al. 2010](#)). *Top row*: Relation between apparent SZ signal (Y_{500} , left) or intrinsic Compton parameter ($D_A^2 Y_{500}$, right) and the corresponding normalised Y_X parameter. *Bottom row*: Relation between X-ray luminosity and Y_{500} (left) and between mass and luminosity (right panel). The new clusters are on average less luminous at a given Y_{500} , or more massive at a given luminosity, than X-ray selected clusters.

found in a MACS-like survey, and the other two are at lower declination than considered by MACS.

6.3. Gas morphology and scaled density profiles

Figure 5 shows [0.3-2] keV *XMM-Newton* images of the newly-discovered clusters. Each image corresponds to the same physical size in units of R_{500} and is corrected for surface brightness dimming with redshift and divided by the emissivity in the [0.3-

2] keV energy band. As detailed in [Arnaud et al. \(2002, Sec 3.2\)](#), the emissivity is computed from a redshifted thermal model convolved with the instrument response and taking into account galactic absorption. The resulting image is proportional to the emission measure along the line of sight, which is then scaled by $E(z)^2 R_{500}$ according to the self-similar model. The colour table is the same for all clusters so that the images would be identical if clusters obeyed strict self-similarity. A first visual impression is that low surface brightness, morphologically-disturbed objects

dominate the sample, which contains very few centrally-peaked, cool core-like objects.

The visual impression is confirmed and quantified when one looks at the density profiles of the clusters shown in Fig. 10. They are plotted together with the density profiles of similar mass clusters from the representative X-ray-selected samples REXCESS ($z < 0.2$; Böhringer et al. 2007) and EXCPRES ($0.4 < z < 0.6$; Arnaud et al, in prep.). For all three samples, the radii are scaled by R_{500} , estimated from the $M_{500}-Y_X$ relation (Eq. 1). The thick lines show the mean profile. While the two X-ray-selected samples agree to a remarkable degree, the *Planck*-selected sample clearly consists of systems with much flatter density profiles, and the corresponding mean profile is significantly flatter than that of the X-ray selected samples. This shape is due to a number of very disturbed clusters with very flat profiles in the new *Planck*-discovered cluster sample. Let us consider the ten clusters with the flattest density profiles, flatter than the mean profile *Planck* cluster profile and flatter than all the REXCESS profiles. These ten objects include PLCK G18.7+23.6 at $z = 0.09$ discussed above, PLCK G286.6-31.3 at $z = 0.21$ that is just at the REFLEX flux limit and PLCK G292.5+22.0 at $z = 0.30$ just at the MACS flux limit (Fig. 9). The other seven clusters lie at medium redshift, $0.3 < z < 0.45$, and are all hot ($T_X \gtrsim 5$ keV) and massive ($M_{500} \gtrsim 5 \times 10^{14} M_\odot$) systems. They lie below the flux limit of both REFLEX and bright MACS for a similar mass range (Ebeling et al. 2010). Thus *Planck* appears to have uncovered a population of massive, disturbed, low-luminosity systems.

6.4. SZ flux versus X-ray prediction and mass-proxy - mass relations

Planck Collaboration (2011g) use *XMM-Newton* archival data to study the relations between the SZ signal and X-ray properties such as Y_X or the soft band luminosity $L_{500,[0.1-2.4] \text{ keV}}$ on a sub-sample of clusters from the high signal-to-noise ratio ESZ sample. This sample (hereafter the ESZ-*XMM*-archive sample) is SZ selected but by nature only comprises clusters from X-ray surveys. As discussed extensively in Planck Collaboration (2011g), the analysis has demonstrated the excellent agreement between the observed scaling relations and the predictions based on REXCESS pressure profiles and numerical simulations (Arnaud et al. 2010). In Fig. 11, we have placed the new *Planck XMM-Newton* confirmed clusters on the $Y_{500}-Y_X$ relations (top panels) and the $L_{500,[0.1-2.4] \text{ keV}}-Y_{500}$ and $M_{500}-L_{500,[0.1-2.4] \text{ keV}}$ relations (bottom panels).

6.4.1. The $Y_{500}-Y_X$ relation

The SZ signal, Y_{500} , is plotted as a function of the corresponding normalized $D_A^{-2} Y_X$ parameter in the left panel of Fig. 11. The new clusters follow the trend observed for the ESZ-*XMM*-archive and are consistent with the REXCESS prediction (blue line). However, a slight turnover is observed at low flux, with observed points systematically above the predicted relation. This excess is likely due to the Malmquist bias. Such a trend is also slightly apparent for the ESZ-*XMM*-archive sample but is less important (see Planck Collaboration 2011g, for discussion of this effect). The low flux clusters span various z values and are redistributed over the range of intrinsic Compton parameter. As a result there is slight positive offset apparent in the $D_A^2 Y_{500}-Y_X$ relation for new clusters as compared to the ESZ-*XMM*-archive sample.

This suggests that as far as the relation between Y_{500} and its X-ray equivalent Y_X is concerned, the new clusters are similar to X-ray selected clusters, although they are more dynamically disturbed. This is expected if indeed the pressure is the quantity less affected by dynamical state and both Y_X and Y_{500} are low scatter mass proxies. However, independent mass estimates are required to check this point; they cannot be provided by X-ray measurements in view of the highly unrelaxed nature of the new clusters.

6.4.2. The $L_{500,[0.1-2.4] \text{ keV}}-Y_{500}$ and $M_{500}-L_{500,[0.1-2.4] \text{ keV}}$ relations.

As compared to X-ray selected clusters, the new clusters fall on the low luminosity side of the $L_{500,[0.1-2.4] \text{ keV}}-Y_{500}$ relation (bottom left panel). In other words, they are under-luminous at given Y_{500} . If the mass is indeed tightly related to Y_{500} (or Y_X) we then expect them to be underluminous at a given mass. This trend is consistently observed in the bottom-right panel, where M_{500} is estimated from Y_X : the new clusters fall on the high-mass, low-luminosity side of the $M_{500}-L_{500,[0.1-2.4] \text{ keV}}$ relation. However, confirmation requires independent mass estimates, e.g., from lensing data.

As shown by Pratt et al. (2009), the underluminous region of the $L-M$ plane is populated by morphologically disturbed systems. This once again suggests that the majority of the new *Planck*-detected systems are disturbed, in agreement with the above discussion on the morphology and the scaled density profiles.

The dispersion of the new clusters about the $M_{500}-L_{500,[0.1-2.4] \text{ keV}}$ relation also seems higher than that for X-ray selected objects. This suggests the existence of new extreme low-luminosity, high-mass objects that are being revealed by *Planck*. The two prominent outliers are PLCK G287.0+32.9 ($z = 0.39$) and PLCK G292.5+22.0 ($z = 0.3$), detected by *Planck* at high S/N of 10.6 and 6.9, respectively. They belong to the very hot ($T \gtrsim 10$ keV) and very massive ($M_{500} \gtrsim 10^{15} M_\odot$) cluster category (Table 2) and are the only two clusters associated with neither a BSC nor an FSC source (Sec. 6.1 and Fig. 8). The flux of PLCK G292.5+22.0 barely reaches the MACS limit for a mass of $M_{500} \sim 9.210^{14} M_\odot$. It has a very disturbed morphology (Fig. 5) and a flat density profile with a scaled central density of 4×10^{-3} (Fig. 10).

7. Further analysis of multiple systems

7.1. Double systems

Two of the new *Planck* sources (PLCK G308.3-20.2 and PLCK G337.1-26.0) were revealed by the *XMM-Newton* validation observations to be double systems. X-ray images of these systems are included in the gallery in Fig. 5.

7.1.1. PLCK G308.3-20.2

Two clusters with quite regular morphology are clearly detected in the *XMM-Newton* snapshot observation for this candidate (denoted *A* and *B* in Fig. 5). The *Planck* position is very close ($1.5'$) to that of the northern cluster *A*. This cluster is very hot ($T_X \sim 10$ keV) and massive (Table 2). From the X-ray spectroscopy, we estimated its redshift to be $z = 0.48$. This estimate is robust, with a quality flag of 2 as reported in Table 2. The second component, *B*, lies $7'$ to the South-East of *A*. The lack

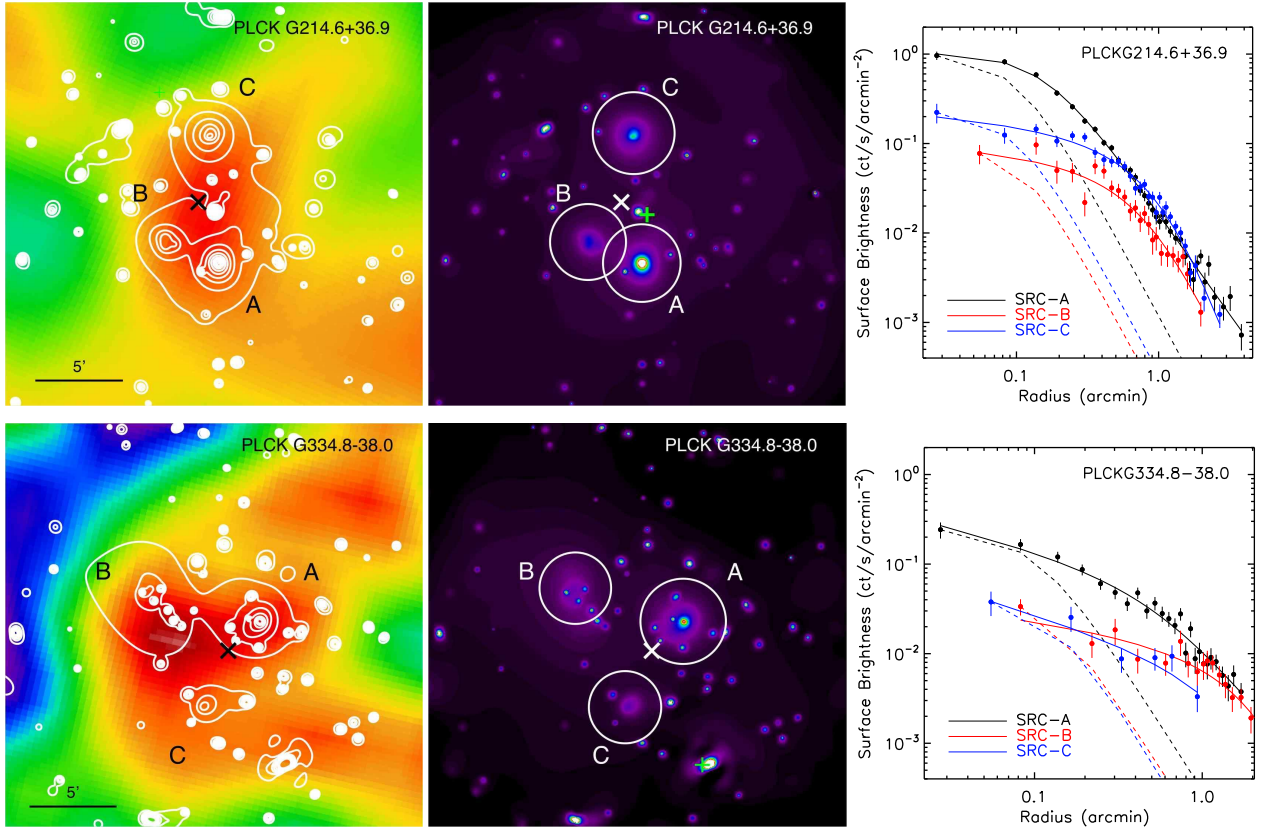


Fig. 12: The triple systems PLCK G214.6+37.0 (top) and PLCK G334.8-38.0 (bottom). The left panels show the *Planck* Y_{SZ} map (derived from an Internal Linear Combination method) with contours from the *XMM-Newton* wavelet filtered [0.3 – 2] keV image (middle panels) overlaid in white. The cross marks the position of the re-extraction centre for flux re-analysis. Extended components found in the *XMM-Newton* image are marked with letters (see text and Table 2). The circles in each *XMM-Newton* image denote the estimated R_{500} radius for each component. The right panels show the X-ray surface brightness profiles of the three components for each super cluster (points with uncertainties), and the best-fitting β -model (solid lines) compared to the profile of the Point Spread Function normalised at the central level (dashed lines).

of statistics prevents us from deriving a sufficiently reliable redshift estimate. Assuming it lies at the same redshift as A, its Y_X parameter is 6.0 times less than that of A, and its derived mass is 2.7 times less. Both clusters are seen as well-separated sources in *RASS*: A is associated with a *RASS*-BSC source, whereas B coincides with a *RASS*-FSC source.

7.1.2. PLCK G337.1-26.0

The distance between components A and B (Fig. 5) is 8.1'. Both have regular morphologies, and exhibit strong Fe K lines allowing individual redshift estimation. They are found to lie at two clearly different redshifts: $z_{Fe} = 0.26$ for A and $z_{Fe} = 0.12$ for B. A is the hottest of the two with $T_X = 6.16 \pm 0.23$ keV and thus the most massive. The Y_X of cluster A is 15 times larger than that of B, making it the main contributor to the *Planck* SZ signal.

The two clusters are seen as separate sources in *RASS* – cluster A as a *RASS*-BCS source and B as a *RASS*-FCS source, respectively. The *XMM-Newton* emission coincides perfectly with the *RASS* emission in each case. Additionally, the two clusters are also found 40' off-axis in a PSPC pointed observation of a globular cluster, NGC 6752 (Johnston et al. 1994), where they are listed as sources within the globular cluster (sources 1 and 2 in Johnston et al.'s Table 8). Lacking spectroscopic information, Johnston et al. (1994) could not specify the exact nature of the sources, which they assumed to be of galactic origin. Note that it is not surprising that the sources were not identified as extended

sources, in view of the large PSPC PSF (90 per cent encircled energy diameter of $\sim 6'$) at such off-axis angle.

7.2. Triple systems

PLCK G214.6+37.0 and PLCK G334.8-38.0 were included in the *XMM-Newton* pilot programme and are detected in the *Planck* survey with S/N of 5.0 and 4.1, respectively. The wavelet-filtered X-ray surface brightness contours are overlaid on the *Planck* maps in the left-hand panels of Fig. 12. For both sources, the *XMM-Newton* observation revealed three extended X-ray components; their extended nature is evident in the surface brightness profiles shown in the right-hand panels.

7.2.1. PLCK G214.6+37.0

The *Planck* SZ source candidate position is located $\sim 5'$ from the two southern components (A and B). A third component, C, lies approximately 7' to the North (Fig. 12, top panels). X-ray spectral analysis of the Fe K line indicates a redshift of $z_{Fe} \sim 0.45$ for the brightest component. None of the sources is particularly hot, luminous, or massive (i.e. $M_{500} < 2.5 \times 10^{14} M_{\odot}$). A *RASS*-FSC source lies in the South-East and its counterpart is easily seen with *XMM-Newton*. It is associated with a point source and is unassociated with the SZ emission.

PLCKG214.6+37.0 falls in the SDSS area. We investigated the SDSS-DR7 database using refined positional information

from the *XMM-Newton* observation. We identified two bright galaxies with spectroscopic redshifts of $z = 0.45$ whose positions coincide with the peak of components *A* and *C*, respectively. Furthermore, a bright galaxy with a photometric redshift of 0.46 lies very close to the *B* X-ray peak. We also ran a dedicated algorithm (Fromenteau et al. 2011) to search for an overdensity of SDSS galaxies at the location of the *Planck* SZ source. While we were unable to differentiate the three substructures, the analysis suggests the presence of a massive structure ($\sim 10^{15} M_{\odot}$) at $z \sim 0.45$ around *A* and *B*. A further cross-correlation with SDSS-DR7 LRGs and SCs catalogue on the SDSS-DR7 (Liivamägi et al. 2010) hints that this triple systems is encompassed within a very large scale structure located at $z \sim 0.45$, and whose centroid lies about 2 deg to the South (see Appendix B for further details).

Thus there is good agreement between all redshift estimates, including the redshift of component *A* estimated from the *XMM-Newton* observation, the optical SDSS redshifts of the three components, and that of the larger-scale environment. This agreement strongly argues in favour of a real structure of (at least) three clusters, likely forming the core of a larger-scale super cluster.

7.2.2. PLCK G334.8-38.0

Two extended X-ray components separated by $7'$ are clearly visible in the *XMM-Newton* image (denoted *A* and *B* in Fig. 12, bottom panels). The *Planck* SZ source candidate position lies between and slightly to the south of the components. A third fainter component, *C*, is seen $5'$ to the South. The spectral analysis of component *A* suggests a redshift of $z_{\text{Fe}} \sim 0.35$ from the Fe L complex detection. Although this estimate has to be taken with caution, we adopted it as the redshift for all three X-ray components. Despite limited statistics, we derived temperatures of ~ 2 keV or less for all components, suggesting masses of $0.5 - 1 \times 10^{14} M_{\odot}$. The only *RASS* source found in the vicinity of the SZ source is clearly not associated with the three *XMM-Newton* components, and coincide with an off axis point source seen in the *XMM-Newton* image.

7.3. Comparison of X-ray and SZ properties

As a first comparison of the X-ray and SZ properties, we simply compared the Y_{500} *Planck* measurement with the predicted value from the summed contribution of the various components, derived from their estimated Y_X values.

For PLCKG308.3-20.2, the predicted summed contribution from *A* and *B* represents 54 per cent of the total measured SZ signal (with 46 per cent from *A* alone). In the case of PLCK G337.1-26.0, this amounts to 63 per cent of the measured Y_{500} (with 51 per cent coming from component *A*). The presence of component *B* marginally enhances the expected SZ signal. As the two clusters are not physically connected, no enhanced SZ emission is expected from their surrounding (i.e., due to mergers, shocks, etc.). We recall that the reconstruction error in the SZ position for *Planck* blind SZ detections is $2'$ on average (Melin et al. 2011). The fact that the *Planck* SZ position lies almost in the middle of the two components (i.e. $3.3'$ and $4.7'$ from *A* and *B* respectively) is probably coincidental.

The *Planck* Y_{500} values of PLCK G214.6+37.0 and PLCK G334.8-38.0 were recomputed at a fixed ‘barycentric’ position of the three components (black cross in Fig. 12). The sum over the three components of PLCK G214.6+37.0 yields

$Y_{500,\text{pred}} = 3.2 \times 10^{-4} \text{ arcmin}^2$, i.e. 40 per cent of the measured value. It is 60 per cent of the 1σ lower limit of Y_{500} , and consistent within its 3σ error range. In the case of PLCK G334.8-38.0, $Y_{500,\text{pred}} = 1.4 \times 10^{-4} \text{ arcmin}^2$ accounts for only ~ 7 per cent of the measured SZ signal and 10 per cent of its 1σ lower limit. However, the predicted value is consistent within the 3σ error range of the *Planck* value, that includes uncertainties on the structure size. We also note that a fortuitous association between a spurious detection by *Planck* and such an association of extended X-ray sources is quite unlikely. Indeed, such a configuration of multiple massive halos either physically connected or associated by projection effect is not usual, making this source even more puzzling. The formal discrepancy between the SZ and X-ray signal is likely partly due to lack of constraints on the structure size in the SZ measurement, even when the position is fixed to the X-ray position. It could also be the result of an under-estimate of the structure redshift. Redshift measurements of various components are definitively required to assess the nature of this association and the *Planck* source.

For all systems, the cumulative contribution predicted by the Y_X measurements does not match the measured SZ signal, although it is compatible in all cases within the 3σ uncertainty on Y_{500} . However, the SZ flux is estimated assuming a single component that follows the universal pressure profile, an inadequate approach for these systems. Due to its moderate spatial resolution at SZ frequencies (i.e., $5-10'$), *Planck* cannot separate the emission of the two or three components contributing to the overall signal. Nevertheless, a proper multi-component analysis can be done in the future. From the X-ray constraints on the system geometry, a spatial template can be built to improve extraction of the Y_{500} signal for each component. Indeed, such a detailed study might allow us to constrain whether SZ or X-ray emission emanates from the regions in between the main system components. The current *XMM-Newton* snapshot observations are not deep enough to build such an accurate template (i.e., measurement of the pressure profiles of the individual components). Together with accurate redshift measurements, deeper X-ray observations are needed to derive the pressure profile of individual clusters.

8. Conclusion and perspectives

In the framework of an *XMM-Newton* DDT validation programme, the first 21 new SZ-detected clusters in the *Planck* survey have been confirmed. Six of these were confirmed in an initial Pilot programme, the results of which were used to improve the quality assessment and selection processes of cluster candidates. The Pilot programme also clearly demonstrated the efficiency of *XMM-Newton* for *Planck* candidate confirmation. Based on the detection of extended emission, snapshot exposures have been shown to be sufficient for unambiguous discrimination between clusters and false candidates. Importantly, for redshifts at least up to $z = 1.5$, the spurious association of *Planck* candidates with faint extended sources in the position error box can be identified via a consistency check between the X-ray and SZ flux. A further 15 candidates were confirmed in a second programme focussed on high S/N detections. The 100 per cent success rate above $S/N = 5$ is the first illustration of the capability of the *Planck* survey to detect new clusters via their SZ signature.

Except for two clusters, all confirmed single or double clusters are associated with *RASS*-BSC or FSC sources. The two non-associations are in fact detected in *RASS*, but at a low S/N of 2-3. The presence of significant *RASS* emission is thus a pos-

itive indicator of the validity of a *Planck* cluster candidate in the presently-covered z range. However, association with a *RASS* source within the position error box is not, by itself, sufficient for cluster candidate confirmation. Two of the false candidates in the Pilot programme, as well as one of the confirmed triple system, were each associated with a single *RASS-FSC* source that *XMM-Newton* subsequently revealed to be a point source. Furthermore such spurious association, and also the number of real candidates not detected in *RASS*, is expected to increase when probing higher z , i.e., at lower *Planck* S/N , or later in the mission.

The *XMM-Newton* validation programme brings clear added value to simple candidate confirmation. The X-ray flux measurement and refined position is essential information for optimisation of deeper follow-up observations for detailed X-ray study. The refined position is also useful for optical follow-up, such as for redshift measurements. Importantly, the determination of the exact cluster centre and extent allows a refined estimate of the SZ flux from *Planck* data. For the X-ray brightest objects, *XMM-Newton* can directly provide the source redshift from the Iron K line in the spectrum. For the present sample of confirmed candidates, 17 of 27 individual clusters (including those in multiple systems) have high quality redshift measurements. The new clusters span the redshift range $0.09 < z < 0.54$ with a median redshift of $z = 0.37$.

In addition, the *XMM-Newton* validation programme has provided a preview of the properties of the new clusters that *Planck* is discovering. Of the 21 confirmed candidates, 17 are single clusters, most of which are found to have highly irregular and/or disturbed morphologies. Two more confirmed candidates were revealed to be double systems, one of which is a projection of two physically independent clusters at different redshifts. More unexpected are two further newly-discovered triple systems that were not resolved by *Planck*. One of these is a true cluster association at $z \sim 0.45$, as confirmed both from the *XMM-Newton* data and in our subsequent analysis of SDSS data. It likely forms the core of a larger-scale supercluster, and is the first supercluster to be discovered via the SZ effect. Theoretically, the SZ signal from such a supercluster is expected to arise from the sum of the signal from the individual clusters, plus a possible additional contribution from a filamentary inter-cluster gas structure, the existence of which has not yet been observationally proven. This *Planck-XMM-Newton* discovery may open the way to constrain the existence and properties of such filamentary matter, via deeper combined *Planck* SZ and X-ray study. The current *XMM-Newton* snapshot observations do not allow conclusive comparison between the SZ and X-ray signals. Deeper observations, sufficient to determine the pressure profile of individual subclusters, are needed.

The *Planck* SZ survey has already started to complete existing X-ray surveys, particularly above $z \sim 0.3$. Notably, it is finding new clusters below the flux limit of catalogues based on extended *RASS* source detection, such as the REFLEX survey, and new clusters brighter than the flux limit of the MACS survey above $z = 0.3$. Such discoveries are due to a combination of larger effective sky coverage and the intrinsic limitations of a *RASS* based cluster survey. In practice, surveys considering extended *RASS* sources, such as REFLEX, have a higher flux limit than that corresponding to *Planck's* sensitivity. By considering *RASS-BSC* sources without extent criteria, the MACS survey reaches a lower flux limit, at the price of extensive optical confirmation follow-up that does not cover the whole sky. Furthermore, the *RASS-BSC* detection algorithm was primarily designed for point source detection and can miss very diffuse sources similar to the clusters with flat morphology that *Planck*

is revealing. Four of our confirmed clusters are above the MACS limit but are not associated with a *RASS-BSC* source.

For the single-component clusters, we have been able to derive the first estimates of their physical properties such as $L_{500,[0.1-2.4] \text{ keV}}$, Y_X (with M_{500} estimated using Y_X as a mass proxy), and density profiles. These properties suggest that the new clusters are massive, dynamically-complex, objects. These SZ-selected objects have, on average, lower luminosities, flatter density profiles, and a more disturbed morphology than their X-ray selected counterparts. As a result, the dispersion around the $M-L$ relation may be larger than previously thought, with new clusters like PLCK G292.5+22.0 at $z = 0.3$ barely reaching the MACS flux limit for an estimated mass of $M_{500} \sim 10^{15} M_{\odot}$. This suggests that there is a non-negligible population of massive, dynamically perturbed (merging) clusters that do not appear in all-sky X-ray surveys. Furthermore, as the bulk of cluster cosmology is currently undertaken with X-ray-selected samples, the lack of these clusters may have implications for measures of the cosmologically-sensitive exponential end of the mass function.

The above preview of newly-detected *Planck* cluster properties must be confirmed with deeper, multi-wavelength, follow-up observations. Such observations include optical redshift confirmation (see the ENO observations presented here), detailed pressure profiles from deeper *XMM-Newton* observations and mass estimates. The latter require the combination of lensing, optical and X-ray data in view of the highly unrelaxed nature of the objects.

Continuation of the confirmation of *Planck* candidates and the characterisation of the *Planck* selection function constitutes a major effort, and requires a good understanding of the properties of the newly-discovered clusters. As we have shown in this paper, *XMM-Newton* can play a major role in this process. The *XMM-Newton* validation programme is presently on going. It is currently focussed on *Planck* detections both in the $S/N > 5$ range and at lower S/N , thus potentially leading to the discovery of more distant clusters.

Acknowledgements. The *Planck* Collaboration thanks Norbert Scharfel for his support to the validation process and granting discretionary time for the observation of *Planck* cluster candidates. The present work is based i) on observations obtained with *XMM-Newton* an ESA science mission with instruments and contributions directly funded by ESA Member States and the USA (NASA) ii) on observations made with the IAC80 telescope operated on the island of Tenerife by the Instituto de Astrofísica de Canarias (IAC) in the Spanish Observatorio del Teide. This research has made use of the following databases: SIMBAD, operated at CDS, Strasbourg, France; the NED database, which is operated by the Jet Propulsion Laboratory, California Institute of Technology, under contract with the National Aeronautics and Space Administration; BAX, which is operated by the Laboratoire d'Astrophysique de Tarbes-Toulouse (LATT), under contract with the Centre National d'Etudes Spatiales (CNES), SZ repository operated by IAS Data and Operation Center (IDOC) under contract with CNES. A description of the Planck Collaboration and a list of its members, indicating which technical or scientific activities they have been involved in, can be found at http://www.rssd.esa.int/index.php?project=PLANCK&page=Planck_Collaboration

References

- Allen, S. W., Rapetti, D. A., Schmidt, R. W., et al. 2008, *MNRAS*, 383, 879
 Anders, E. & Grevesse, N. 1989, *Geochim. Cosmochim. Acta*, 53, 197
 Arnaud, K. A. 1996, in *Astronomical Society of the Pacific Conference Series*, Vol. 101, *Astronomical Data Analysis Software and Systems V*, ed. G. H. Jacoby & J. Barnes, 17–+
 Arnaud, M., Aghanim, N., & Neumann, D. M. 2002, *A&A*, 389, 1
 Arnaud, M., Pratt, G. W., Piffaretti, R., et al. 2010, *A&A*, 517, A92
 Balestra, I., Tozzi, P., Ettori, S., et al. 2007, *A&A*, 462, 429
 Benítez, N. 2000, *ApJ*, 536, 571
 Bersanelli, M., Mandolesi, N., Butler, R. C., et al. 2010, *A&A*, 520, A4+
 Bertin, E. & Arnouts, S. 1996, *A&AS*, 117, 393

- Böhringer, H., Schuecker, P., Guzzo, L., et al. 2004, *A&A*, 425, 367
- Böhringer, H., Schuecker, P., Guzzo, L., et al. 2001, *A&A*, 369, 826
- Böhringer, H., Schuecker, P., Pratt, G. W., et al. 2007, *A&A*, 469, 363
- Böhringer, H., Voges, W., Huchra, J. P., et al. 2000, *ApJS*, 129, 435
- Carvalho, P., Rocha, G., & Hobson, M. P. 2009, *MNRAS*, 393, 681
- Croston, J. H., Pratt, G. W., Böhringer, H., et al. 2008, *A&A*, 487, 431
- da Silva, A. C., Kay, S. T., Liddle, A. R., & Thomas, P. A. 2004, *MNRAS*, 348, 1401
- De Luca, A. & Molendi, S. 2004, *A&A*, 419, 837
- Dickey, J. M. & Lockman, F. J. 1990, *ARA&A*, 28, 215
- Ebeling, H., Barrett, E., Donovan, D., et al. 2007, *ApJ*, 661, L33
- Ebeling, H., Edge, A. C., Allen, S. W., et al. 2000, *MNRAS*, 318, 333
- Ebeling, H., Edge, A. C., Böhringer, H., et al. 1998, *MNRAS*, 301, 881
- Ebeling, H., Edge, A. C., & Henry, J. P. 2001, *ApJ*, 553, 668
- Ebeling, H., Edge, A. C., Mantz, A., et al. 2010, *MNRAS*, 407, 83
- Fromenteau, S., , et al. 2011, in prep.
- Jansen, F., Lumb, D., Altieri, B., et al. 2001, *A&A*, 365, L1
- Johnston, H. M., Verbunt, F., & Hasinger, G. 1994, *A&A*, 289, 763
- Lamarre, J., Puget, J., Ade, P. A. R., et al. 2010, *A&A*, 520, A9+
- Leahy, J. P., Bersanelli, M., D’Arcangelo, O., et al. 2010, *A&A*, 520, A8+
- Leccardi, A. & Molendi, S. 2008, *A&A*, 487, 461
- Liivamägi, L. J., Tempel, E., & Saar, E. 2010, *ArXiv e-prints*
- Mandolesi, N., Bersanelli, M., Butler, R. C., et al. 2010, *A&A*, 520, A3+
- Maughan, B. J., Jones, C., Forman, W., & Van Speybroeck, L. 2008, *ApJS*, 174, 117
- Melin, J., Aghanim, N., Bartelman, M., & et al. 2011
- Melin, J., Bartlett, J. G., & Delabrouille, J. 2006, *A&A*, 459, 341
- Menanteau, F., Gonzalez, J., Juin, J.-B., et al. 2010, *arXiv:1006.5126*
- Mennella et al. 2011, *Planck early results 03: First assessment of the Low Frequency Instrument in-flight performance (Submitted to A&A)*
- Pacaud, F., Pierre, M., Adami, C., et al. 2007, *MNRAS*, 382, 1289
- Piffaretti, R., Arnaud, M., Pratt, G. W., Pointecouteau, E., & Melin, J. 2010, *arXiv:1007.1916*
- Planck Collaboration. 2011a, *Planck early results 01: The Planck mission (Submitted to A&A)*
- Planck Collaboration. 2011b, *Planck early results 02: The thermal performance of Planck (Submitted to A&A)*
- Planck Collaboration. 2011c, *Planck early results 07: The Early Release Compact Source Catalogue (Submitted to A&A)*
- Planck Collaboration. 2011d, *Planck early results 08: The all-sky early Sunyaev-Zeldovich cluster sample (Submitted to A&A)*
- Planck Collaboration. 2011e, *Planck early results 09: XMM-Newton follow-up for validation of Planck cluster candidates (Submitted to A&A)*
- Planck Collaboration. 2011f, *Planck early results 10: Statistical analysis of Sunyaev-Zeldovich scaling relations for X-ray galaxy clusters (Submitted to A&A)*
- Planck Collaboration. 2011g, *Planck early results 11: Calibration of the local galaxy cluster Sunyaev-Zeldovich scaling relations (Submitted to A&A)*
- Planck Collaboration. 2011h, *Planck early results 12: Cluster Sunyaev-Zeldovich optical Scaling relations (Submitted to A&A)*
- Planck Collaboration. 2011i, *Planck early results 13: Statistical properties of extragalactic radio sources in the Planck Early Release Compact Source Catalogue (Submitted to A&A)*
- Planck Collaboration. 2011j, *Planck early results 14: Early Release Compact Source Catalogue validation and extreme radio sources (Submitted to A&A)*
- Planck Collaboration. 2011k, *Planck early results 15: Spectral energy distributions and radio continuum spectra of northern extragalactic radio sources (Submitted to A&A)*
- Planck Collaboration. 2011l, *Planck early results 16: The Planck view of nearby galaxies (Submitted to A&A)*
- Planck Collaboration. 2011m, *Planck early results 17: Origin of the submillimeter excess dust emission in the Magellanic Clouds (Press)*
- Planck Collaboration. 2011n, *Planck early results 18: The power spectrum of cosmic infrared background anisotropies (Submitted to A&A)*
- Planck Collaboration. 2011o, *Planck early results 19: All-sky temperature and dust optical depth from Planck and IRAS — constraints on the “dark gas” in our Galaxy (Submitted to A&A)*
- Planck Collaboration. 2011p, *Planck early results 20: New light on anomalous microwave emission from spinning dust grains (Submitted to A&A)*
- Planck Collaboration. 2011q, *Planck early results 21: Properties of the interstellar medium in the Galactic plane (Submitted to A&A)*
- Planck Collaboration. 2011r, *Planck early results 22: The submillimetre properties of a sample of Galactic cold clumps (Submitted to A&A)*
- Planck Collaboration. 2011s, *Planck early results 23: The Galactic cold core population revealed by the first all-sky survey (Submitted to A&A)*
- Planck Collaboration. 2011t, *Planck early results 24: Dust in the diffuse interstellar medium and the Galactic halo (Submitted to A&A)*

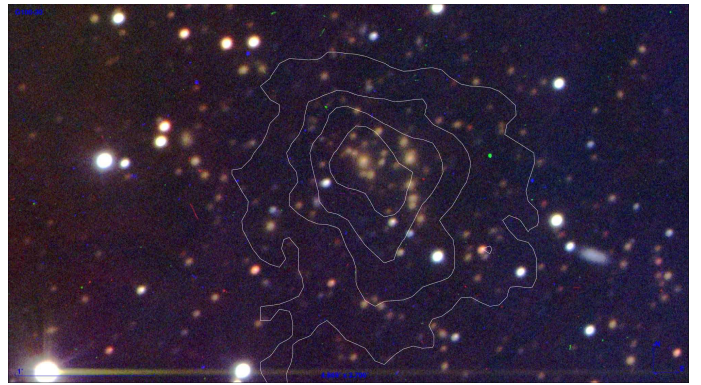


Fig. A.1: RGB colour-composite image of the optical counterpart of cluster PLCK G100.2-30.4, as obtained with the IAC80 telescope. R,G,B colours are g,r and i-band Sloan filters, respectively. Although the IAC80 field of view is 7 arcmin, this image is trimmed to 4.8×2.7 arcmin, and it is centred at the *XMM-Newton* counterpart (white isocontours). Red galaxies defining the red-sequence of the cluster are clearly seen at the centre of the image.

- Planck Collaboration. 2011u, *Planck early results 25: Thermal dust in Nearby Molecular Clouds (Submitted to A&A)*
- Planck Collaboration. 2011v, *The Explanatory Supplement to the Planck Early Release Compact Source Catalogue (ESA)*
- Planck HFI Core Team. 2011a, *Planck early results 04: First assessment of the High Frequency Instrument in-flight performance (Submitted to A&A)*
- Planck HFI Core Team. 2011b, *Planck early results 06: High Frequency Instrument data processing (Submitted to A&A)*
- Pratt, G. W. & Arnaud, M. 2002, *A&A*, 394, 375
- Pratt, G. W., Arnaud, M., Piffaretti, R., et al. 2010, *A&A*, 511, A85+
- Pratt, G. W., Böhringer, H., Croston, J. H., et al. 2007, *A&A*, 461, 71
- Pratt, G. W., Croston, J. H., Arnaud, M., & Böhringer, H. 2009, *A&A*, 498, 361
- Read, A. M. & Ponman, T. J. 2003, *A&A*, 409, 395
- Reiprich, T. H. & Böhringer, H. 2002, *ApJ*, 567, 716
- Rosset, C., Tristram, M., Ponthieu, N., et al. 2010, *A&A*, 520, A13+
- Rothenflug, R. & Arnaud, M. 1985, *A&A*, 144, 431
- Scharf, C. 2002, *ApJ*, 572, 157
- Strüder, L., Briel, U., Dennerl, K., et al. 2001, *A&A*, 365, L18
- Sunyaev, R. A. & Zeldovich, Y. B. 1972, *Comments on Astrophysics and Space Physics*, 4, 173
- Tauber, J. A., Mandolesi, N., Puget, J., et al. 2010, *A&A*, 520, A1+
- Turner, M. J. L., Abbey, A., Arnaud, M., et al. 2001, *A&A*, 365, L27
- Šuhada, R., Song, J., Böhringer, H., et al. 2010, *A&A*, 514, L3+
- Voges, W., Aschenbach, B., Boller, T., et al. 1999, *A&A*, 349, 389
- Voges, W., Aschenbach, B., Boller, T., et al. 2000, *VizieR Online Data Catalog*, 9029, 0
- Voit, G. M. 2005, *Reviews of Modern Physics*, 77, 207
- Zacchei et al. 2011, *Planck early results 05: Low Frequency Instrument data processing (Submitted to A&A)*
- Zhang, Y., Böhringer, H., Finoguenov, A., et al. 2006, *A&A*, 456, 55

Appendix A: Redshift determination based on optical counterparts

A.1. PLCK G100.2-30.4

We observed PLCK G100.2-30.4 with the CAMELOT camera on the 0.82-m IAC80 telescope at the Observatorio del Teide (Tenerife, Spain), as part of a validation campaign for newly detected *Planck* clusters that started in semester 2010 A. We obtained four images in the Sloan g,r,i and z-bands, all centred at the location of the *Planck* cluster candidate, with a field of view of $7'$ and a pixel scale of $0''.304$. The integration time achieved in each filter was approximately 3000 s, yielding a limiting magnitude of 22.9, 21.7, 20.1 and 20.2 for g,r,i and z, respectively, for a 6σ -level detection.

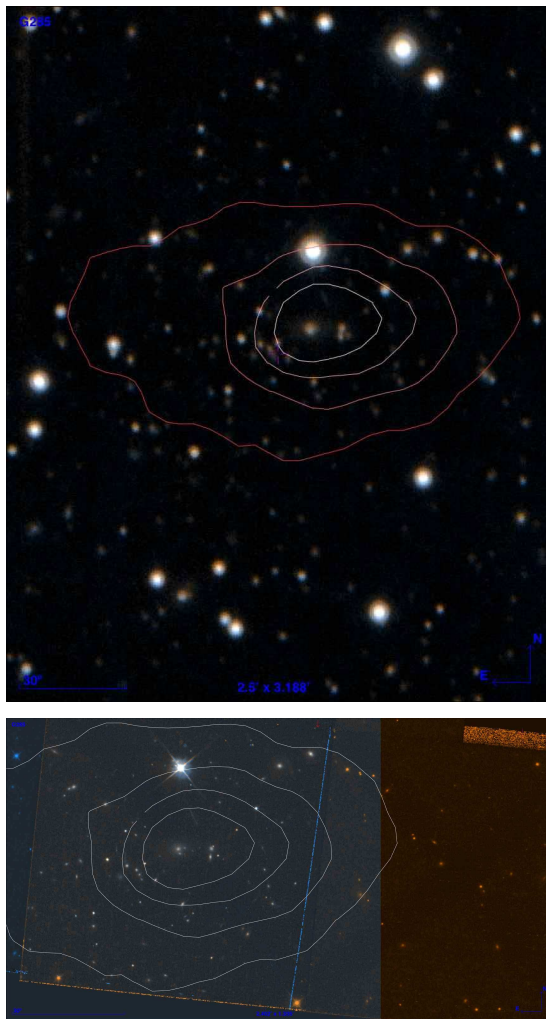


Fig. A.2: Reduced images for PLCK G285.0-23.7, based on archival data. Top: Combined V- and R-band images taken from ESO archives (SUSI2 data). Bottom: Combined F814W and F606W images taken from WFPC2 archival data. The *XMM-Newton* iso-contours are overlaid.

Image data reduction was undertaken using standard IRAF routines. The source detection, catalogue extraction and photometry measurements on the processed images were performed using SEXTRACTOR (Bertin & Arnouts 1996). Sources were identified independently in the four bands using a 1.5σ SEXTRACTOR detection threshold in the filtered maps (i.e. equivalent to $S/N \sim 3$). The colour-composite image of the g,r and i filters (see Figure A.1) clearly shows an excess of red galaxies at the location of the X-ray detection.

We have obtained photometric redshifts for all galaxies in the field using the BPZ code (Benítez 2000). We use the photometry information from the g, r and i bands, as they provide more reliable redshift estimates. From the final galaxy catalogue, we identify eight galaxies located within a radius of $1.5'$ from the peak of the X-ray emission which all have a photometric redshift estimate of about 0.38. Based on this information, we estimate the photometric redshift of the cluster to be $z_{\text{phot}} = 0.38 \pm 0.04$.

A.2. PLCK G285.0-23.7

After a detailed search in the ESO archive⁴ of all existing observations within $5'$ around the location of PLCK G286.3-38.4, we found ten images taken with SUSI2 and three spectra taken with EMMI, all obtained at the ESO-NTT 3.58m telescope⁵. The first panel in Figure A.2 shows the resulting colour composite of the central region of this cluster, based on V- (1600s) and R-band (1680s) images with the SUSI2 instrument at NTT.

Publicly-available WFPC2 images for this region also exist in the *HST* archive⁶. The second panel in Figure A.2 shows the reduced colour composite based on the F814W and F606W filter images. Both images have an integration time of 1200 s. From the later colour-redshift relation for those images, we derived a redshift for this cluster of $z \sim 0.37$.

A.3. PLCK G286.3-38.4

After a detailed search in the ESO archive of all existing observations within 5 arcmin around the location of PLCK G286.3-38.4, nine images (NTT/SUSI2), and three spectra (NTT/EMMI) were found. The spectroscopic data from NTT/EMMI are associated with a proposal to characterise the optical counterpart of a potential galaxy cluster associated with the X-ray source RX J0359.1-7205.

We undertook data reduction of the three EMMI spectra using standard IRAF routines. Fig. A.3 shows the combined final spectrum. Although this spectrum has a very low signal-to-noise ratio, a preliminary redshift estimate could be obtained from cross-correlating the reduced spectrum with a reference template spectrum for an early-type galaxy (taken from <http://www.arcetri.astro.it/~k20/>), using the IRAF routine `fxcor`. The derived redshift estimate is $z = 0.307 \pm 0.003$, although the significance of the cross-correlation peak is very low. Nevertheless, this redshift estimate is apparently compatible with the preliminary identification of two absorption features ($H\beta$ and Mg-I) in the reduced spectrum (see Fig. A.3), which gives us more confidence in the result.

Appendix B: Search for large scale structure in the field of PLCK G214.6+36.9 using SDSS

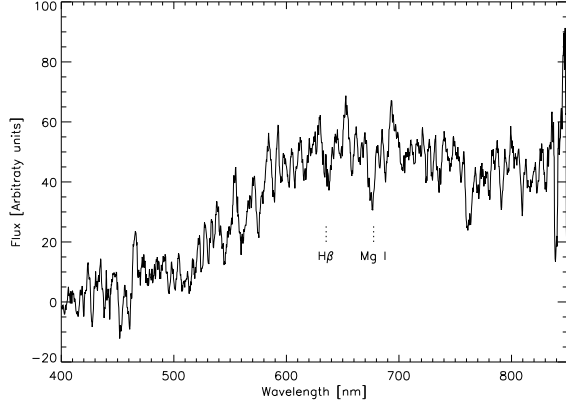
We searched for superclusters in the direction of PLCK G214.6+36.9 by calculating the luminosity density field of the spectroscopic sample of luminous red galaxies (LRG) from the SDSS DR7. To correct for the finite width of the survey magnitude window, galaxy luminosities were weighted. Superclusters are delineated by an appropriate luminosity density level. For the LRG superclusters, we set this level at 3.0 times the mean density. This level was obtained by comparing the SDSS main galaxy sample superclusters with those in the LRG sample in the volume where these samples overlap. The procedure is explained in detail in Liivamägi et al. (2010).

The best candidate is a supercluster containing 10 LRGs with a mass centre at RA=137:5, Dec=13:6, lying at $z = 0.45$. As each LRG likely indicates the presence of a galaxy cluster, as the two LRGs that lie in the observed X-ray clusters, the supercluster is likely to contain 10 clusters. The estimated total

⁴ <http://archive.eso.org>

⁵ <http://www.eso.org/sci/facilities/lasilla/telescopes/ntt/>

⁶ <http://archive.eso.org/wdb/wdb/hst/science/query>



138+013+045
 Fig. A.3: Reduced spectrum for PLCK286.0-38.4, based on the EMMI data obtained from ESO archives. A cross-correlation analysis yields a redshift estimate of $z = 0.307$, which is consistent with the preliminary estimate of the two absorption features $H\beta$ and Mg-I which are also indicated in the Figure.

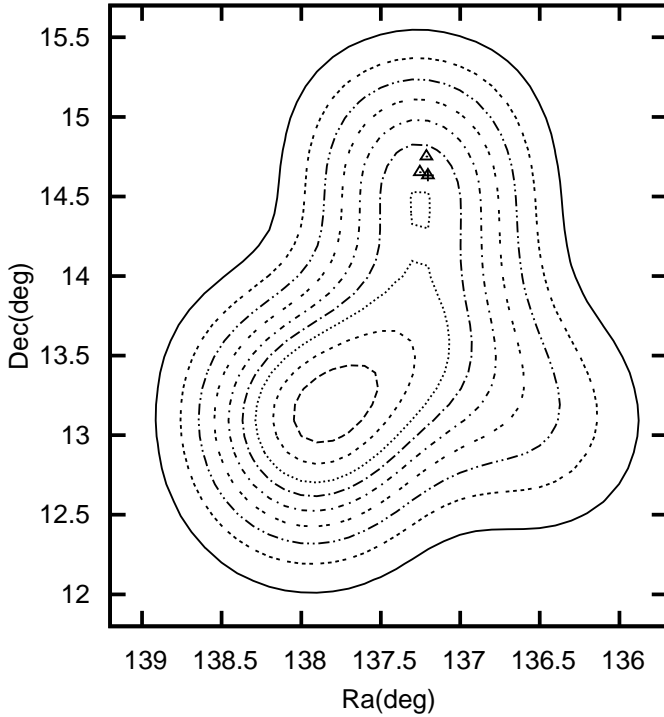


Fig. B.1: Projected luminosity density map for the best supercluster candidate. The X-ray sources are marked by triangles, the SZ source by the cross. The minimum density level and the level step are $10^{11}L_{\odot}$ per square degree.

luminosity of the supercluster is $3 \times 10^{12}L_{\odot}$, the maximum extent about $70h^{-1}$ Mpc. The co-moving distance along the line-of-sight between the two LRGs hosted by the X-ray clusters is about $4.1h^{-1}$ Mpc. Using a M/L value of 200 (in solar units), the total mass of the supercluster is about 10^{15} solar masses. This supercluster is typical among other LRG superclusters at that distance. Fig. 12 shows the projected luminosity density contours of the candidate supercluster, together with the location of the PLCK G214.6+36.9 and the X-ray clusters.

- ¹ Aalto University Metsähovi Radio Observatory, Metsähovintie 114, FIN-02540 Kylmälä, Finland
- ² Agenzia Spaziale Italiana Science Data Center, c/o ESRIN, via Galileo Galilei, Frascati, Italy
- ³ Astroparticule et Cosmologie, CNRS (UMR7164), Université Denis Diderot Paris 7, Bâtiment Condorcet, 10 rue A. Domon et Léonie Duquet, Paris, France
- ⁴ Atacama Large Millimeter/submillimeter Array, ALMA Santiago Central Offices Alonso de Cordova 3107, Vitacura, Casilla 763 0355, Santiago, Chile
- ⁵ CITA, University of Toronto, 60 St. George St., Toronto, ON M5S 3H8, Canada
- ⁶ CNRS, IRAP, 9 Av. colonel Roche, BP 44346, F-31028 Toulouse cedex 4, France
- ⁷ California Institute of Technology, Pasadena, California, U.S.A.
- ⁸ Centre of Mathematics for Applications, University of Oslo, Blindern, Oslo, Norway
- ⁹ Centro de Astrofísica, Universidade do Porto, Rua das Estrelas, 4150-762 Porto, Portugal
- ¹⁰ DAMTP, Centre for Mathematical Sciences, Wilberforce Road, Cambridge CB3 0WA, U.K.
- ¹¹ DSM/Irfu/SPP, CEA-Saclay, F-91191 Gif-sur-Yvette Cedex, France
- ¹² DTU Space, National Space Institute, Juliane Mariesvej 30, Copenhagen, Denmark
- ¹³ Departamento de Física, Universidad de Oviedo, Avda. Calvo Sotelo s/n, Oviedo, Spain
- ¹⁴ Department of Astronomy and Astrophysics, University of Toronto, 50 Saint George Street, Toronto, Ontario, Canada
- ¹⁵ Department of Physics & Astronomy, University of British Columbia, 6224 Agricultural Road, Vancouver, British Columbia,

- Canada
- 16 Department of Physics and Astronomy, University of Southern California, Los Angeles, California, U.S.A.
- 17 Department of Physics and Astronomy, University of Sussex, Brighton BN1 9QH, U.K.
- 18 Department of Physics, Gustaf Hällströmin katu 2a, University of Helsinki, Helsinki, Finland
- 19 Department of Physics, Purdue University, 525 Northwestern Avenue, West Lafayette, Indiana, U.S.A.
- 20 Department of Physics, University of California, Berkeley, California, U.S.A.
- 21 Department of Physics, University of California, One Shields Avenue, Davis, California, U.S.A.
- 22 Department of Physics, University of California, Santa Barbara, California, U.S.A.
- 23 Department of Physics, University of Illinois at Urbana-Champaign, 1110 West Green Street, Urbana, Illinois, U.S.A.
- 24 Dipartimento di Fisica G. Galilei, Università degli Studi di Padova, via Marzolo 8, 35131 Padova, Italy
- 25 Dipartimento di Fisica, Università La Sapienza, P. le A. Moro 2, Roma, Italy
- 26 Dipartimento di Fisica, Università degli Studi di Milano, Via Celoria, 16, Milano, Italy
- 27 Dipartimento di Fisica, Università degli Studi di Trieste, via A. Valerio 2, Trieste, Italy
- 28 Dipartimento di Fisica, Università di Roma Tor Vergata, Via della Ricerca Scientifica, 1, Roma, Italy
- 29 Discovery Center, Niels Bohr Institute, Blegdamsvej 17, Copenhagen, Denmark
- 30 Dpto. Astrofísica, Universidad de La Laguna (ULL), E-38206 La Laguna, Tenerife, Spain
- 31 European Southern Observatory, ESO Vitacura, Alonso de Cordova 3107, Vitacura, Casilla 19001, Santiago, Chile
- 32 European Space Agency, ESAC, Camino bajo del Castillo, s/n, Urbanización Villafranca del Castillo, Villanueva de la Cañada, Madrid, Spain
- 33 European Space Agency, ESAC, Planck Science Office, Camino bajo del Castillo, s/n, Urbanización Villafranca del Castillo, Villanueva de la Cañada, Madrid, Spain
- 34 European Space Agency, ESTEC, Keplerlaan 1, 2201 AZ Noordwijk, The Netherlands
- 35 Helsinki Institute of Physics, Gustaf Hällströmin katu 2, University of Helsinki, Helsinki, Finland
- 36 INAF - Osservatorio Astronomico di Padova, Vicolo dell'Osservatorio 5, Padova, Italy
- 37 INAF - Osservatorio Astronomico di Roma, via di Frascati 33, Monte Porzio Catone, Italy
- 38 INAF - Osservatorio Astronomico di Trieste, Via G.B. Tiepolo 11, Trieste, Italy
- 39 INAF/IASF Bologna, Via Gobetti 101, Bologna, Italy
- 40 INAF/IASF Milano, Via E. Bassini 15, Milano, Italy
- 41 INRIA, Laboratoire de Recherche en Informatique, Université Paris-Sud 11, Bâtiment 490, 91405 Orsay Cedex, France
- 42 IPAG: Institut de Planétologie et d'Astrophysique de Grenoble, Université Joseph Fourier, Grenoble 1 / CNRS-INSU, UMR 5274, Grenoble, F-38041, France
- 43 Imperial College London, Astrophysics group, Blackett Laboratory, Prince Consort Road, London, SW7 2AZ, U.K.
- 44 Infrared Processing and Analysis Center, California Institute of Technology, Pasadena, CA 91125, U.S.A.
- 45 Institut d'Astrophysique Spatiale, CNRS (UMR8617) Université Paris-Sud 11, Bâtiment 121, Orsay, France
- 46 Institut d'Astrophysique de Paris, CNRS UMR7095, Université Pierre & Marie Curie, 98 bis boulevard Arago, Paris, France
- 47 Institute of Astronomy and Astrophysics, Academia Sinica, Taipei, Taiwan
- 48 Institute of Theoretical Astrophysics, University of Oslo, Blindern, Oslo, Norway
- 49 Instituto de Astrofísica de Canarias, C/Vía Láctea s/n, La Laguna, Tenerife, Spain
- 50 Instituto de Física de Cantabria (CSIC-Universidad de Cantabria), Avda. de los Castros s/n, Santander, Spain
- 51 Jet Propulsion Laboratory, California Institute of Technology, 4800 Oak Grove Drive, Pasadena, California, U.S.A.
- 52 Jodrell Bank Centre for Astrophysics, Alan Turing Building, School of Physics and Astronomy, The University of Manchester, Oxford Road, Manchester, M13 9PL, U.K.
- 53 Kavli Institute for Cosmology Cambridge, Madingley Road, Cambridge, CB3 0HA, U.K.
- 54 LERMA, CNRS, Observatoire de Paris, 61 Avenue de l'Observatoire, Paris, France
- 55 Laboratoire AIM, IRFU/Service d'Astrophysique - CEA/DSM - CNRS - Université Paris Diderot, Bât. 709, CEA-Saclay, F-91191

- Gif-sur-Yvette Cedex, France
- 56 Laboratoire Traitement et Communication de l'Information, CNRS (UMR 5141) and Télécom ParisTech, 46 rue Barrault F-75634 Paris Cedex 13, France
- 57 Laboratoire de Physique Subatomique et de Cosmologie, CNRS, Université Joseph Fourier Grenoble I, 53 rue des Martyrs, Grenoble, France
- France
- 58 Laboratoire de l'Accélérateur Linéaire, Université Paris-Sud 11, CNRS/IN2P3, Orsay, France
- 59 Lawrence Berkeley National Laboratory, Berkeley, California, U.S.A.
- 60 Max-Planck-Institut für Astrophysik, Karl-Schwarzschild-Str. 1, 85741 Garching, Germany
- 61 Max-Planck-Institut für Extraterrestrische Physik, Giessenbachstraße, 85748 Garching, Germany
- 62 MilliLab, VTT Technical Research Centre of Finland, Tietotie 3, Espoo, Finland
- 63 National University of Ireland, Department of Experimental Physics, Maynooth, Co. Kildare, Ireland
- 64 Niels Bohr Institute, Blegdamsvej 17, Copenhagen, Denmark
- 65 Observational Cosmology, Mail Stop 367-17, California Institute of Technology, Pasadena, CA, 91125, U.S.A.
- 66 SISSA, Astrophysics Sector, via Bonomea 265, 34136, Trieste, Italy
- 67 SUPA, Institute for Astronomy, University of Edinburgh, Royal Observatory, Blackford Hill, Edinburgh EH9 3HJ, U.K.
- 68 School of Physics and Astronomy, Cardiff University, Queens Buildings, The Parade, Cardiff, CF24 3AA, U.K.
- 69 Space Research Institute (IKI), Russian Academy of Sciences, Profsoyuznaya Str, 84/32, Moscow, 117997, Russia
- 70 Space Sciences Laboratory, University of California, Berkeley, California, U.S.A.
- 71 Stanford University, Dept of Physics, Varian Physics Bldg, 382 Via Pueblo Mall, Stanford, California, U.S.A.
- 72 Tartu Observatory, Toravere, Tartumaa, 61602, Estonia
- 73 Tuorla Observatory, Department of Physics and Astronomy, University of Turku, Väisäläntie 20, FIN-21500, Piikkiö, Finland
- 74 Universität Heidelberg, Institut für Theoretische Astrophysik, Albert-Überle-Str. 2, 69120, Heidelberg, Germany
- 75 Université de Toulouse, UPS-OMP, IRAP, F-31028 Toulouse cedex 4, France
- 76 University of Cambridge, Cavendish Laboratory, Astrophysics group, J J Thomson Avenue, Cambridge, U.K.
- 77 University of Cambridge, Institute of Astronomy, Madingley Road, Cambridge, U.K.
- 78 University of Granada, Departamento de Física Teórica y del Cosmos, Facultad de Ciencias, Granada, Spain
- 79 University of Miami, Knight Physics Building, 1320 Campo Sano Dr., Coral Gables, Florida, U.S.A.
- 80 Warsaw University Observatory, Aleje Ujazdowskie 4, 00-478 Warszawa, Poland