

Surface rotation period extraction plots

Solar-Like

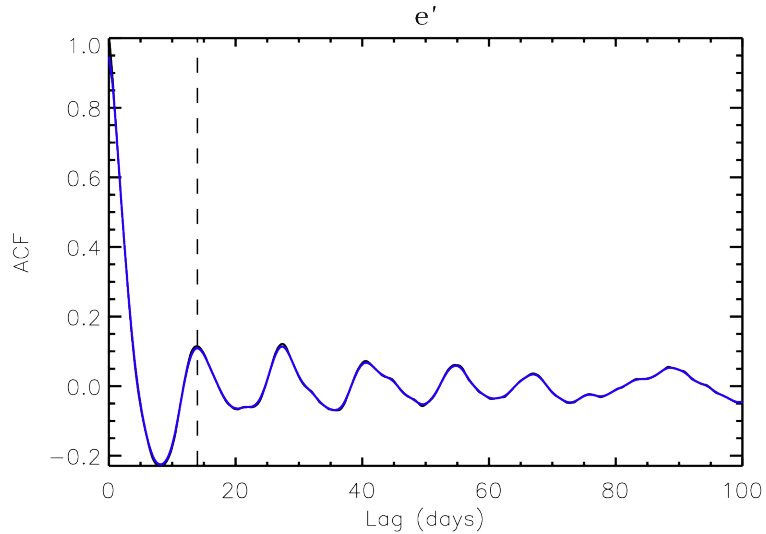
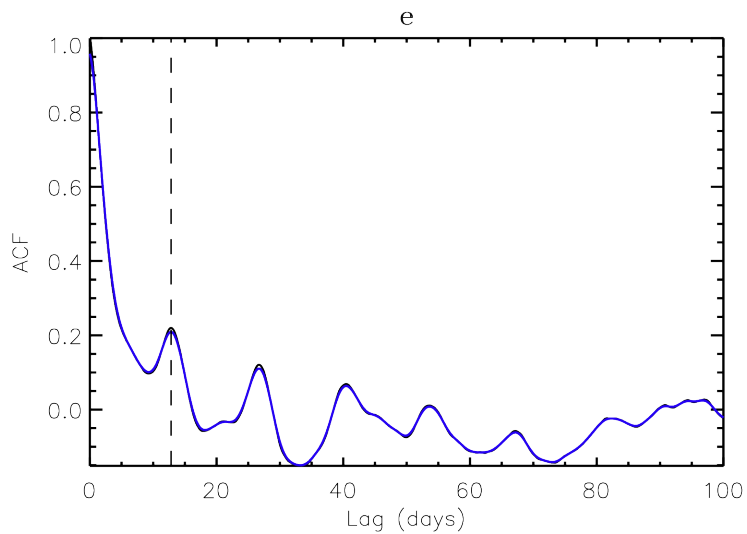
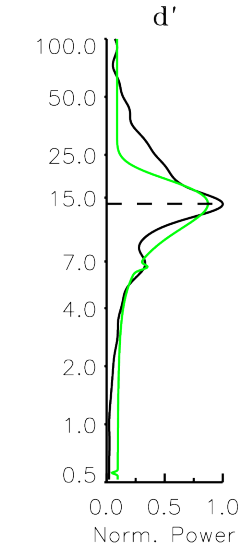
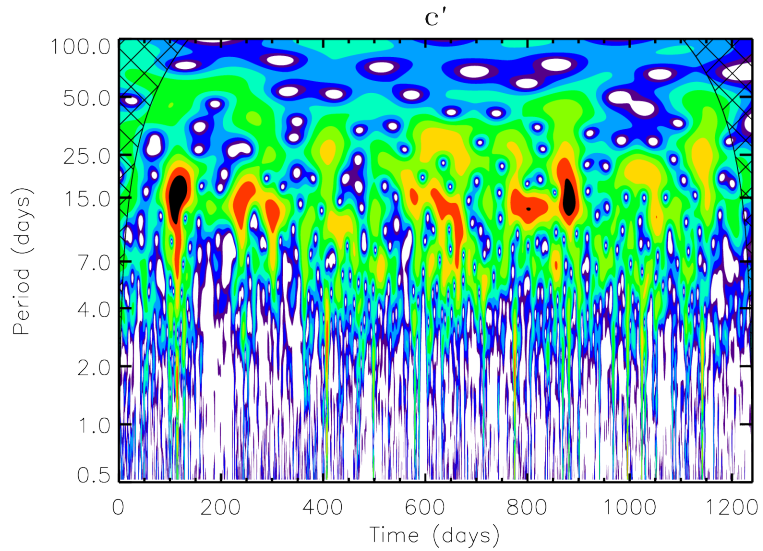
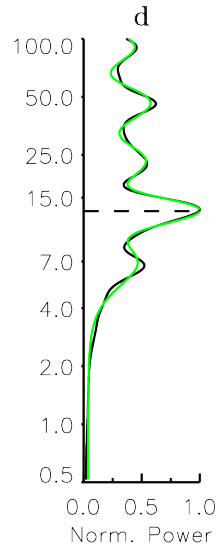
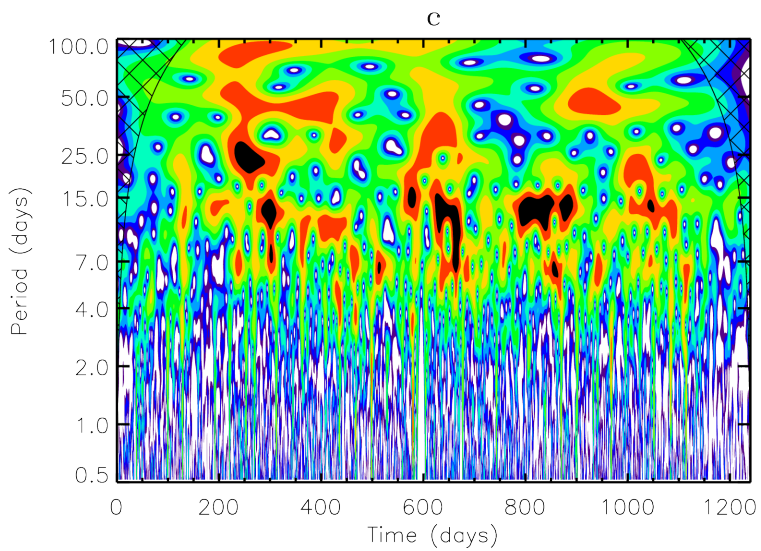
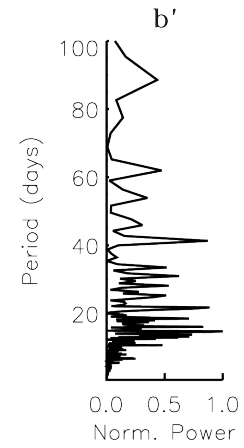
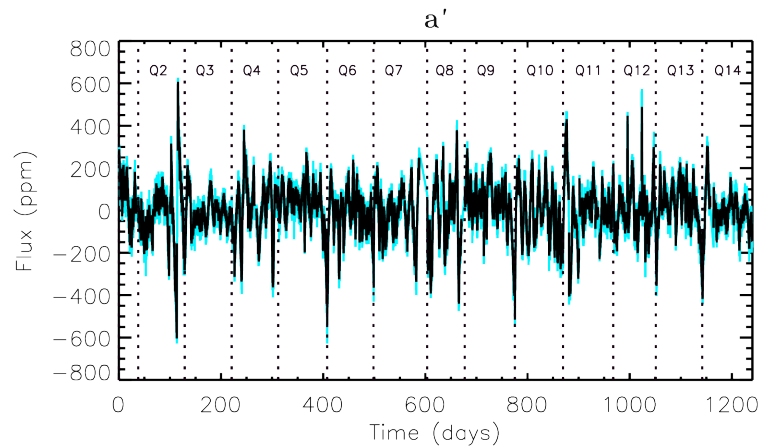
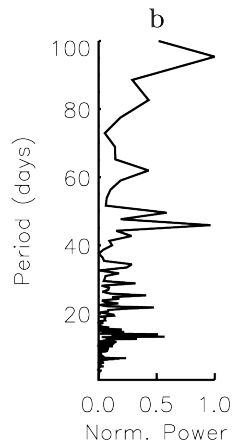
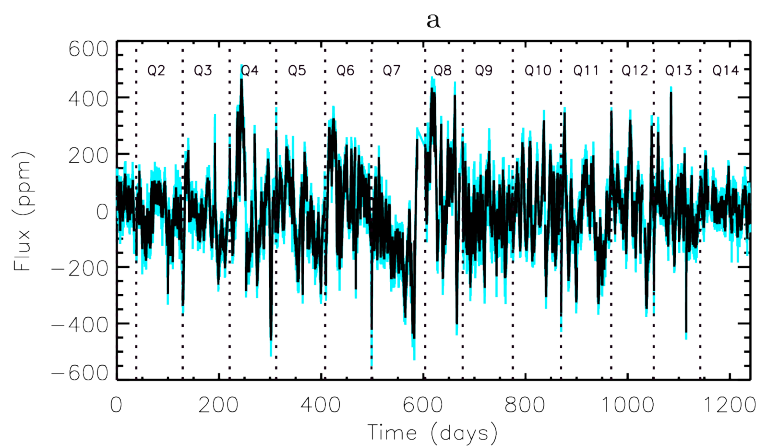
Plots marked a, b, c,... correspond to light curves obtained with the PDC-MAP corrections on which a 100 days-filter was then applied.

Plots marked a', b', c',... correspond to light curves obtained with the KADACS corrections using a filter of 30 days applied to the whole light curves.

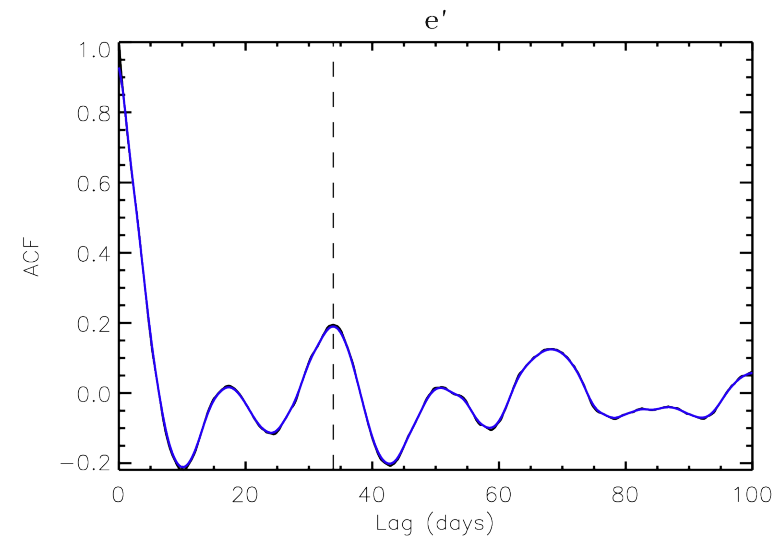
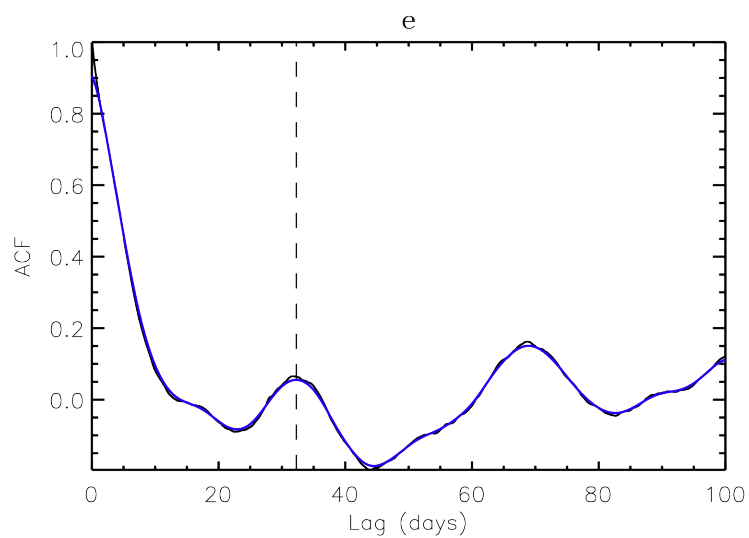
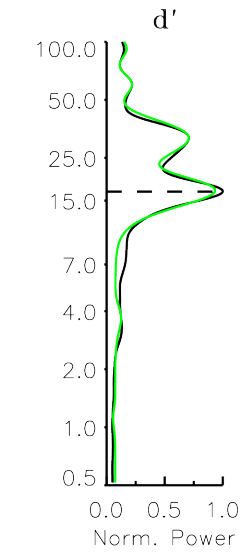
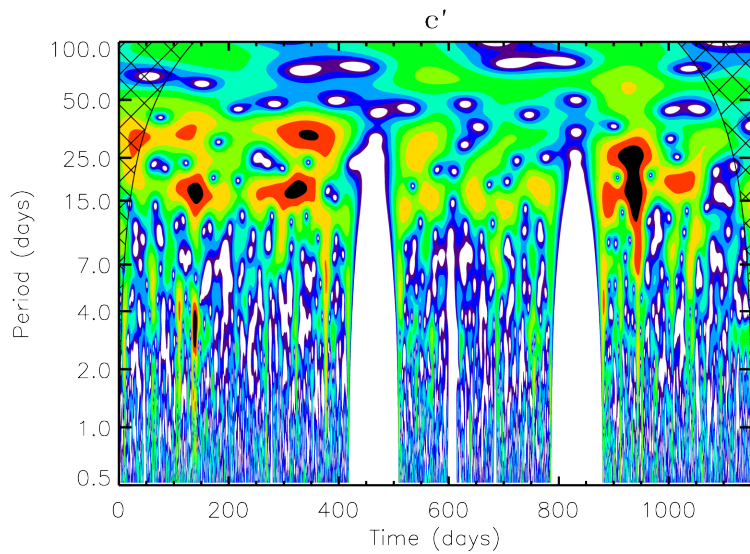
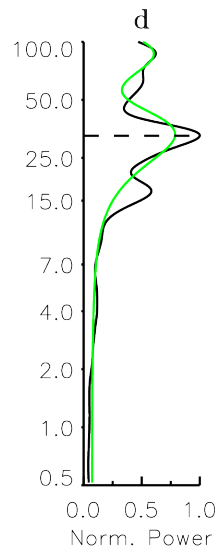
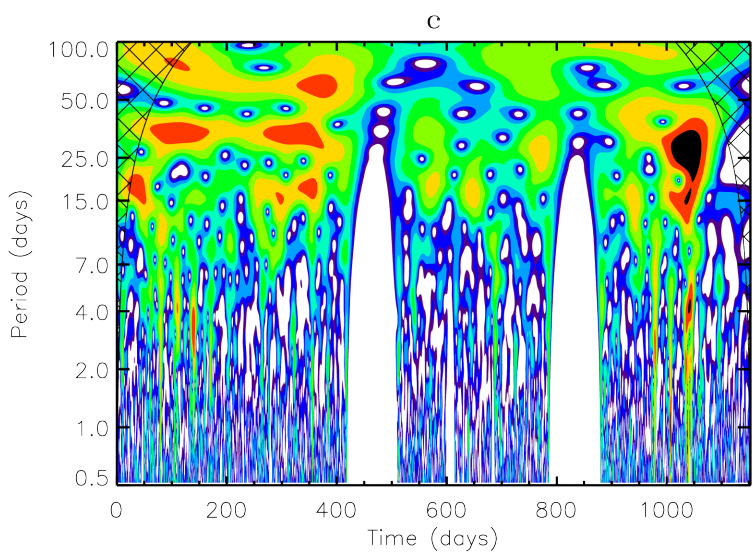
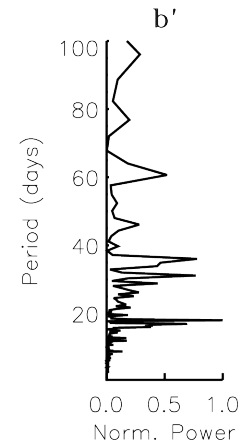
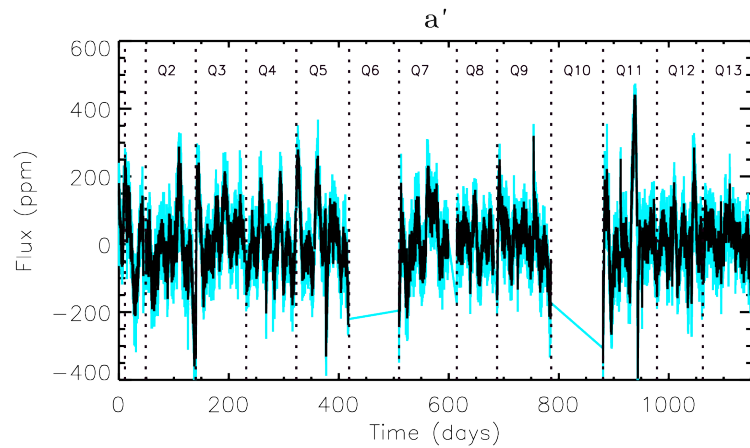
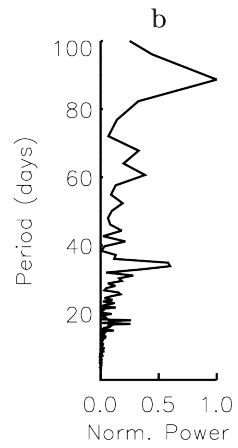
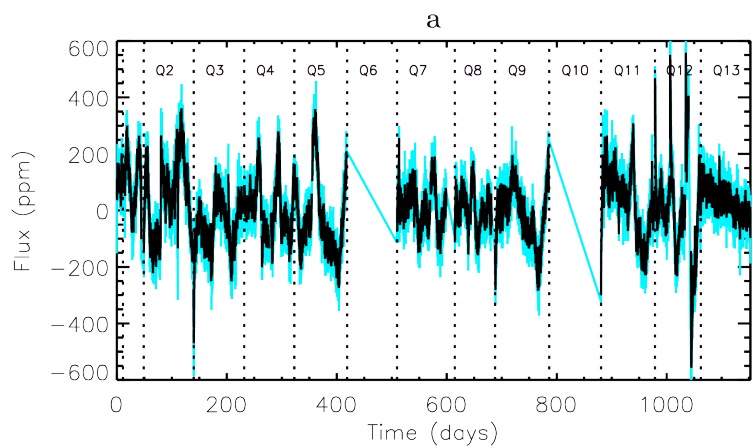
For both corrections, the plots are as follows:

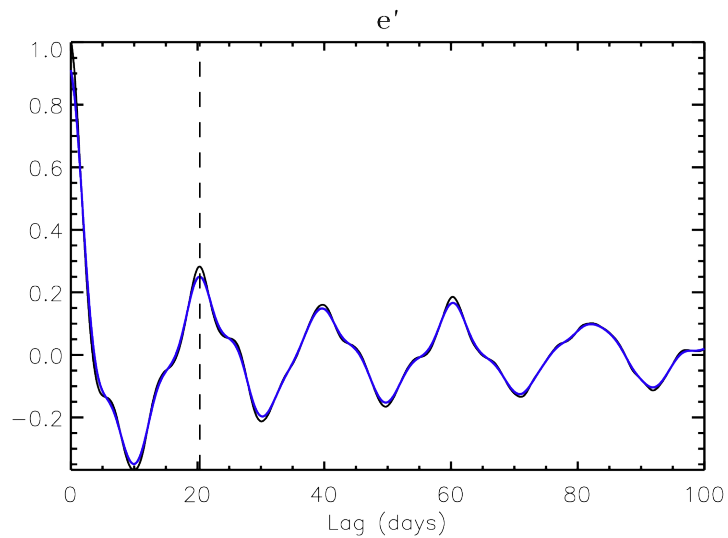
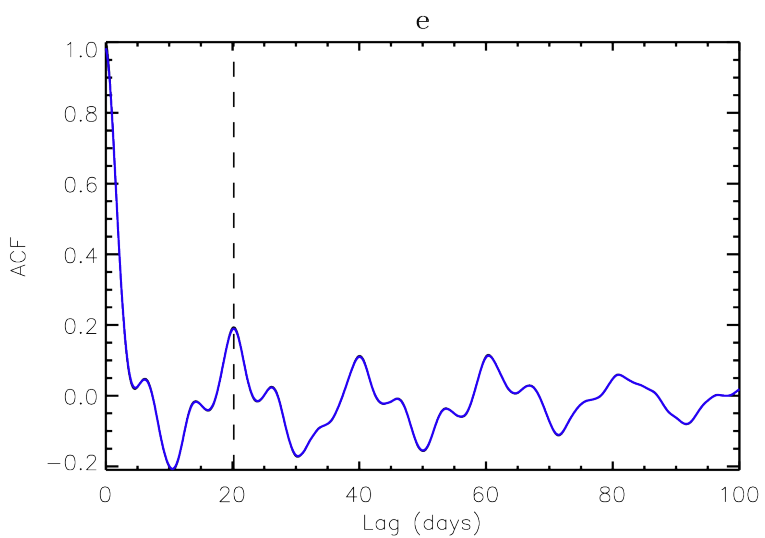
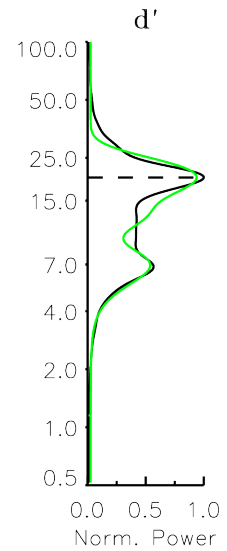
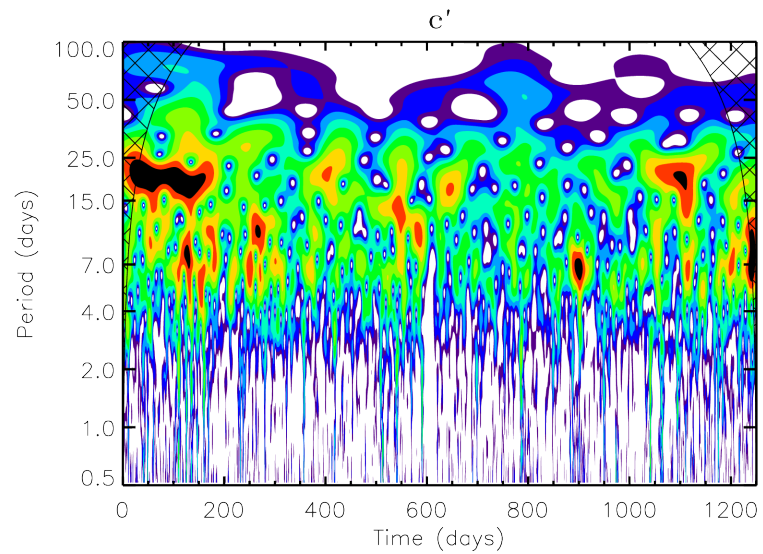
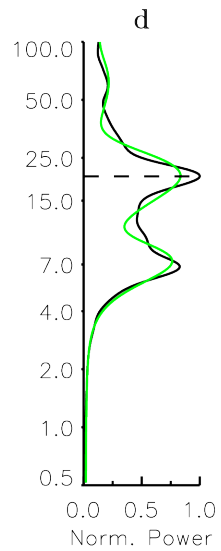
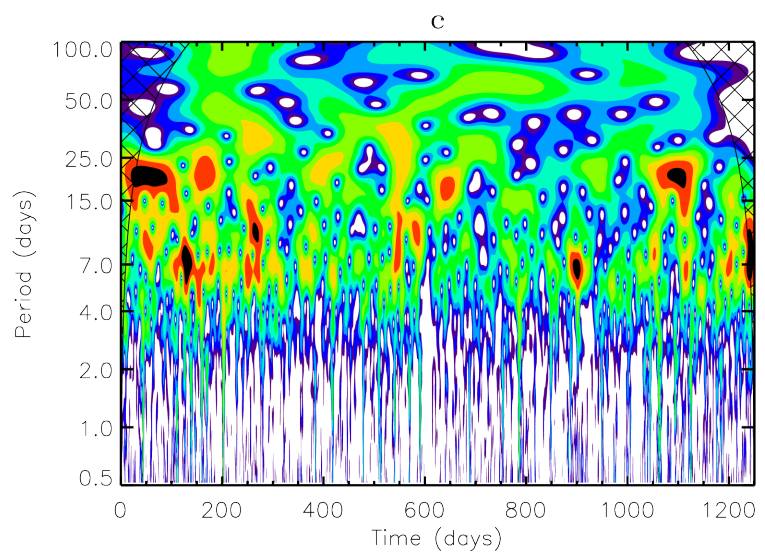
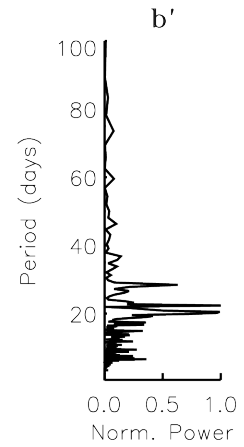
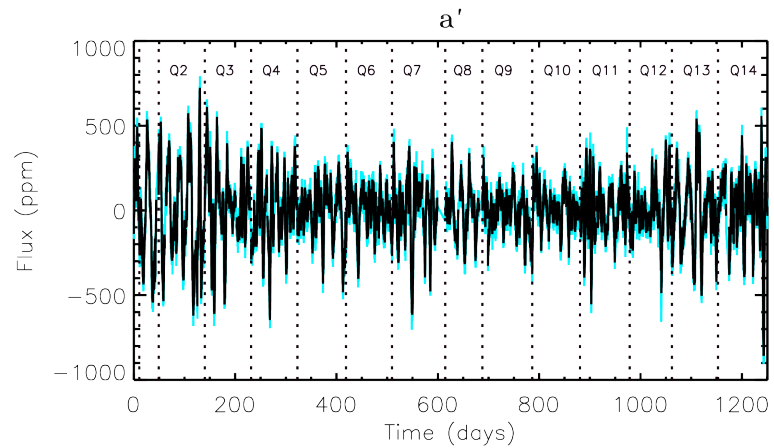
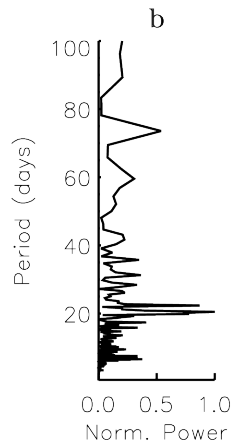
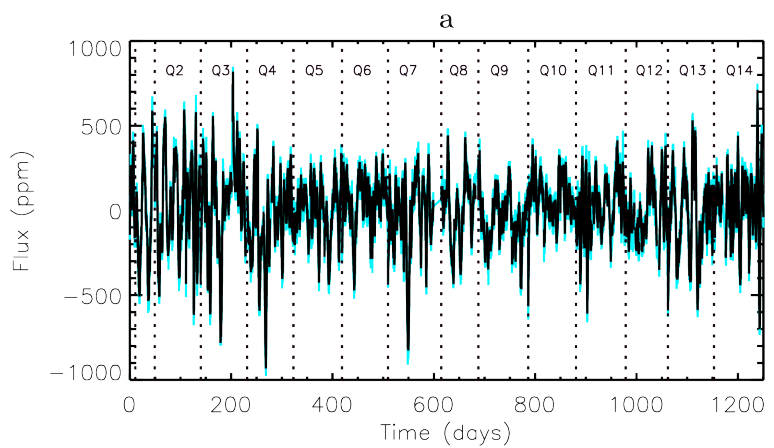
- **a:** Original light curve (light blue) and rebinned light curve (black). The vertical dotted lines mark the limits of the *Kepler* quarters.
- **b:** Power density spectrum of the rebinned light curve, normalised to its maximum.
- **c:** Wavelet Decomposition of the rebinned light curve. The red/black areas mark the most relevant periods while the blue/white areas mark the less relevant ones. The hatched region corresponds to the unreliable zone due to border effects.
- **d:** Global Wavelet Power Spectrum (i.e. the Wavelet Decomposition projected onto the periods axis) of the rebinned light curve, normalised to its maximum (black) and multiple gaussian functions fit (green). The horizontal dotted line marks the period retruned by this method.
- **e:** Autocorrelation Function (ACF) of the rebinned light curve (black) and smoothed ACF (blue). The vertical dotted line marks the period retruned by this method.

KIC 3427720

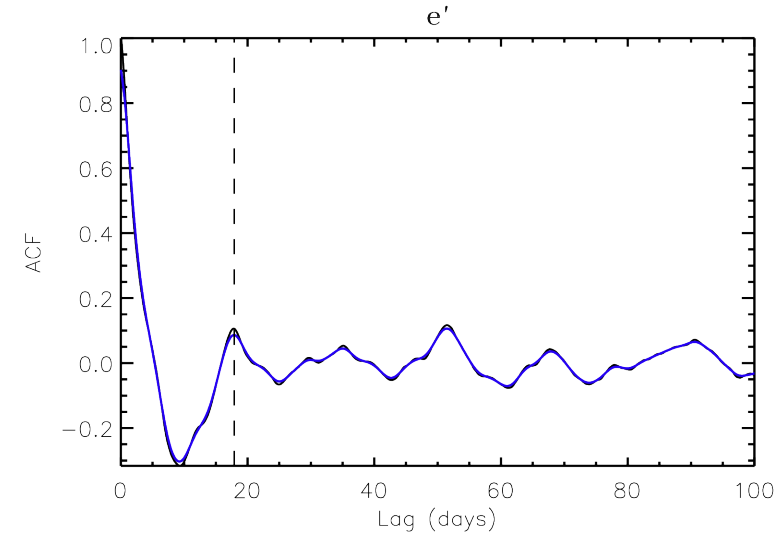
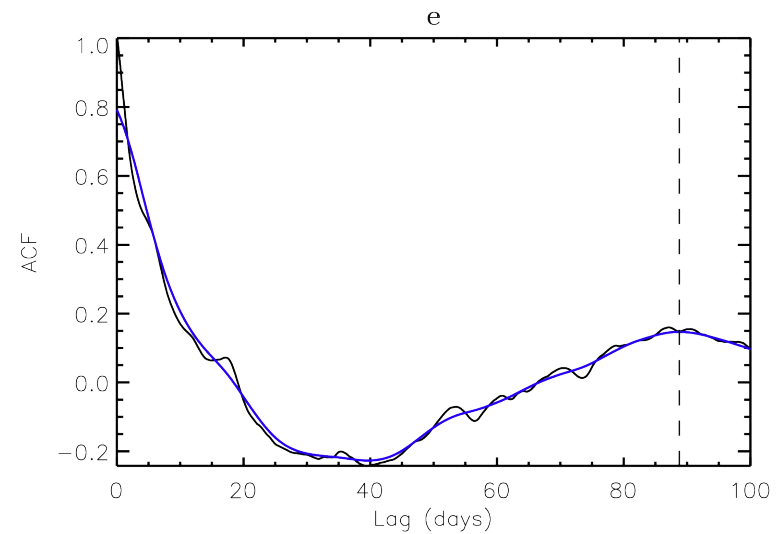
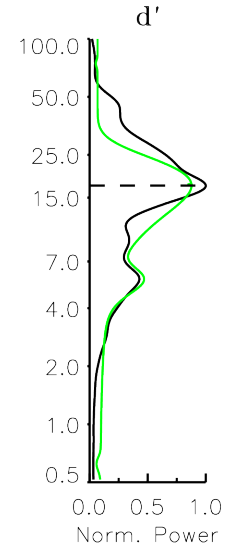
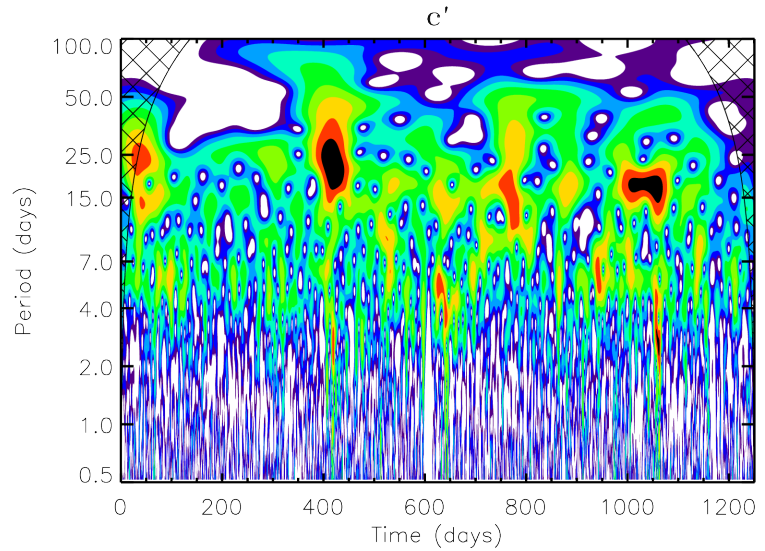
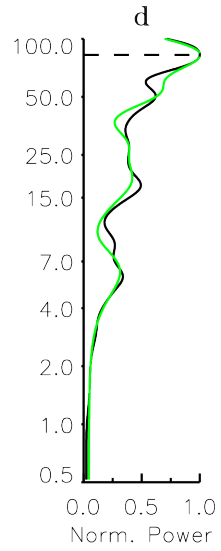
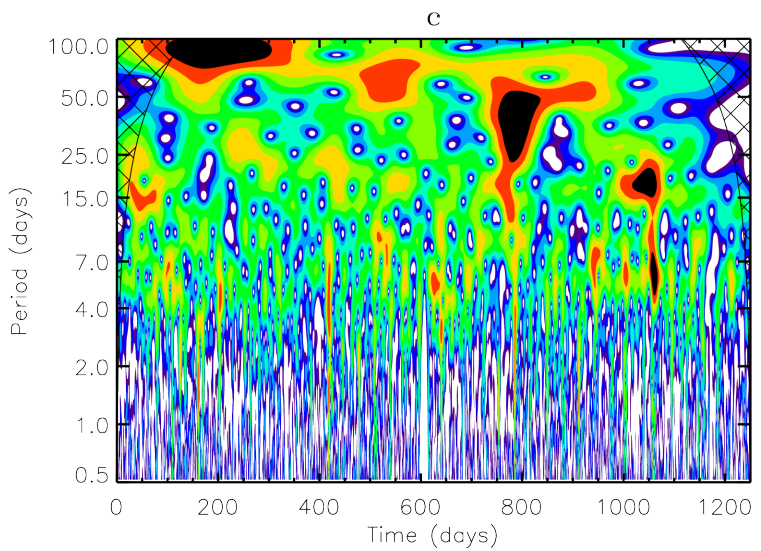
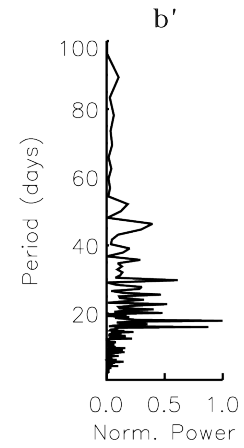
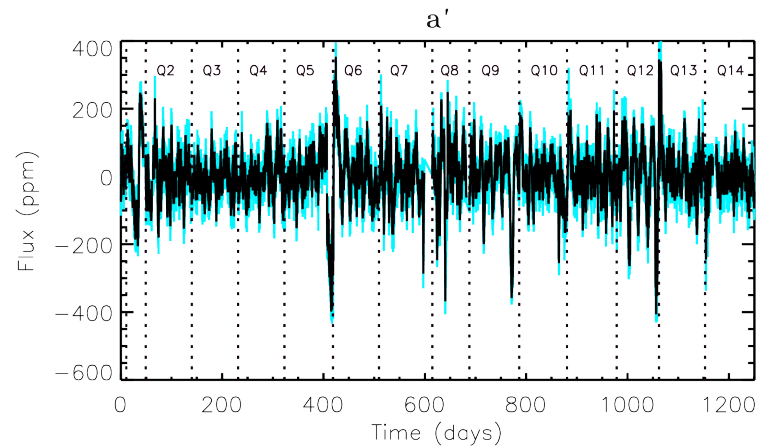
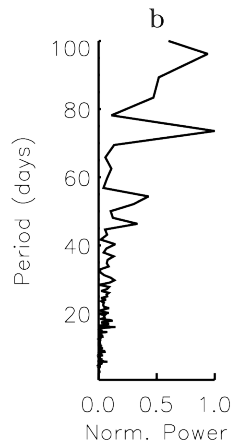
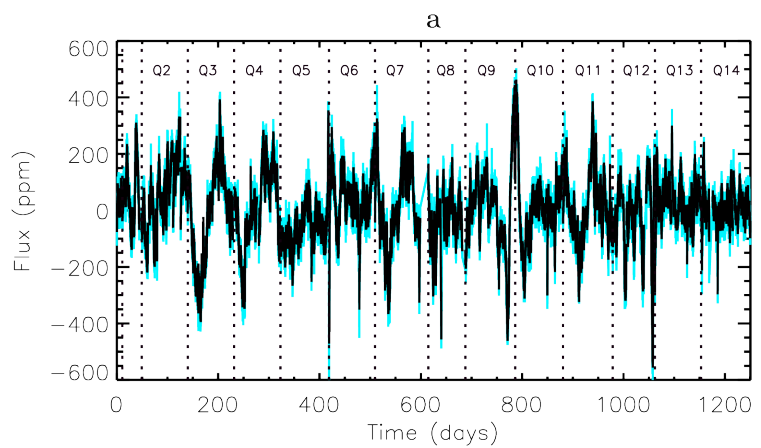


KIC 3656476

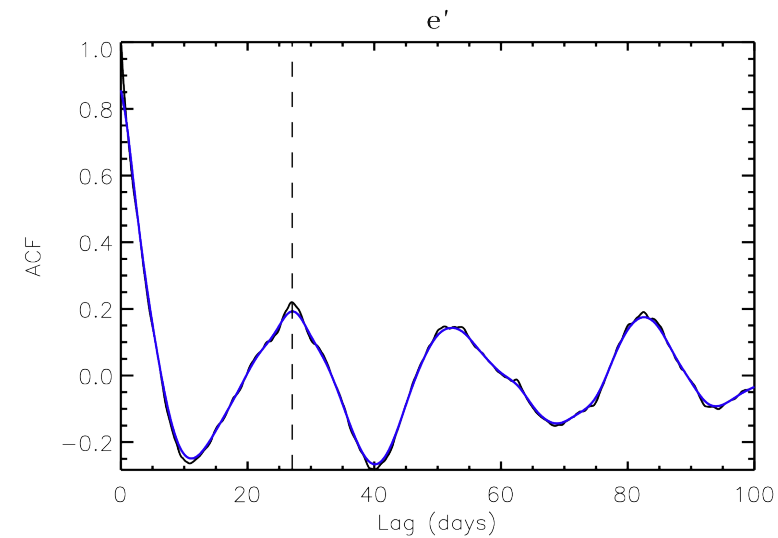
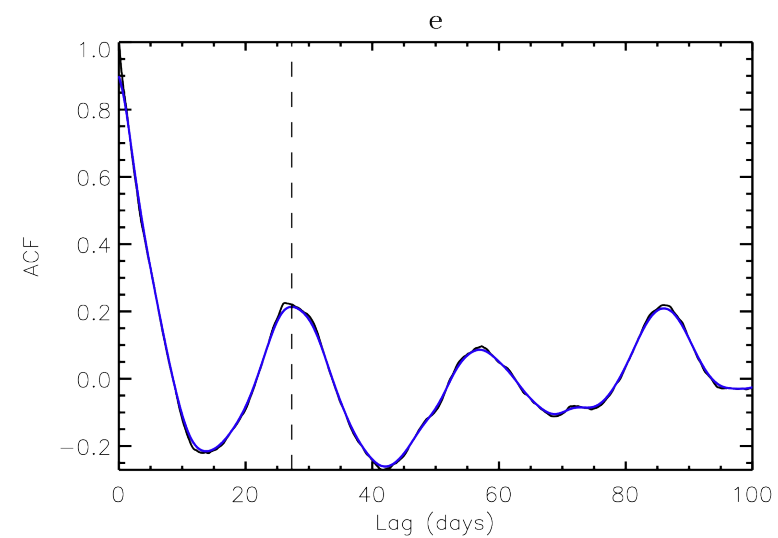
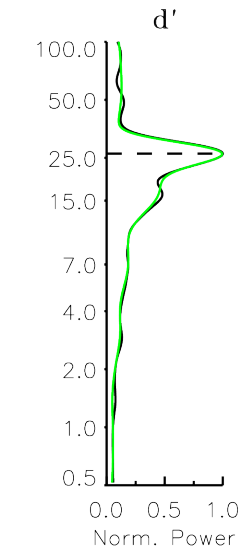
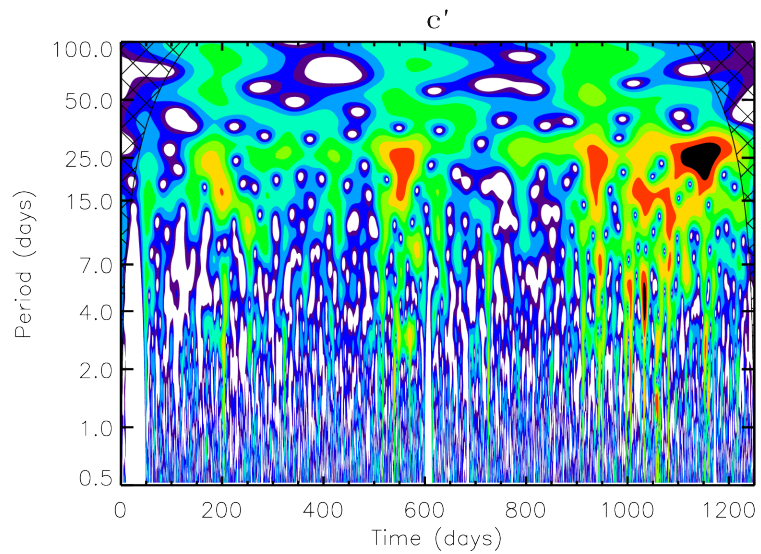
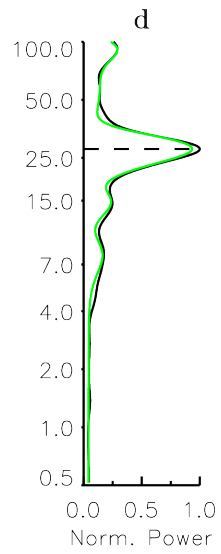
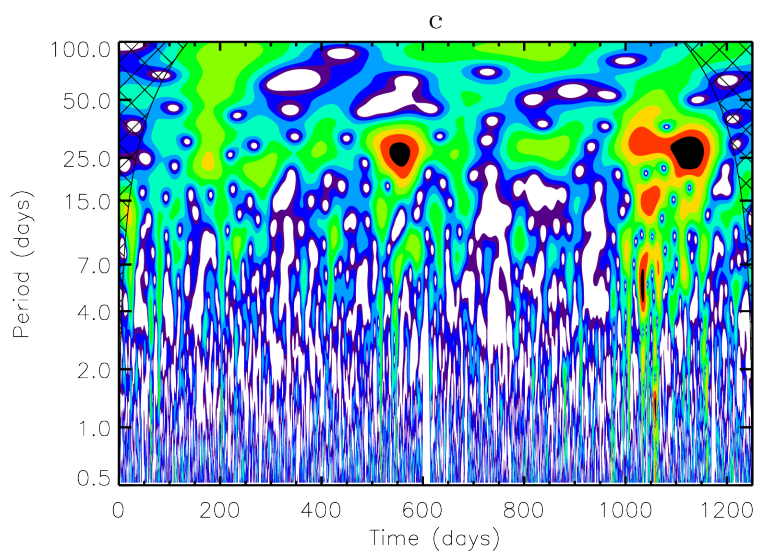
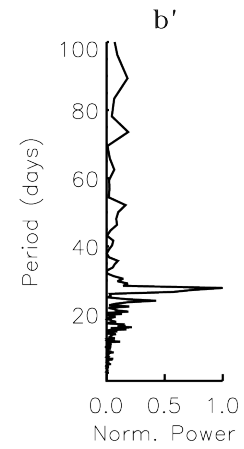
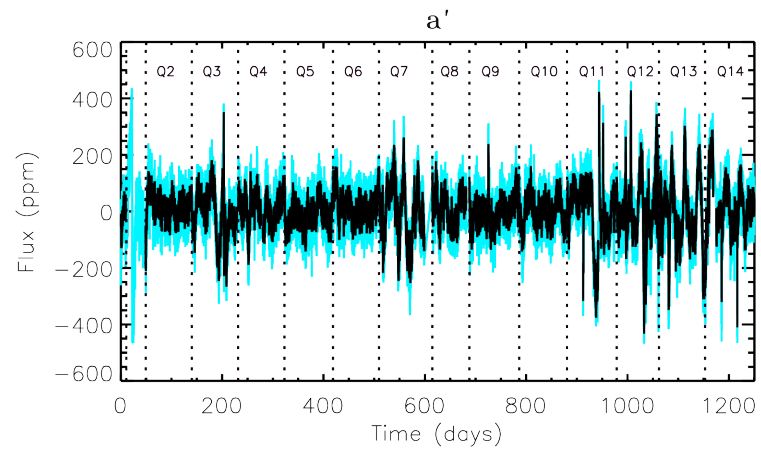
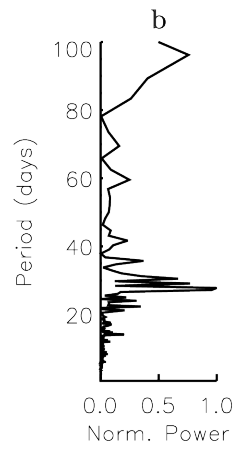
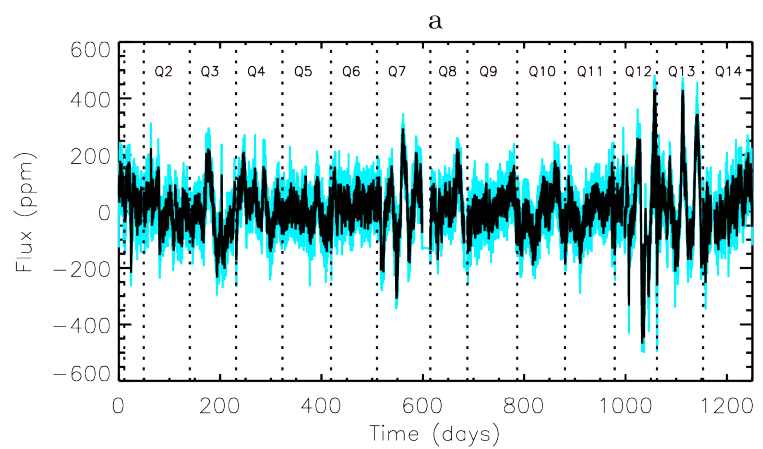




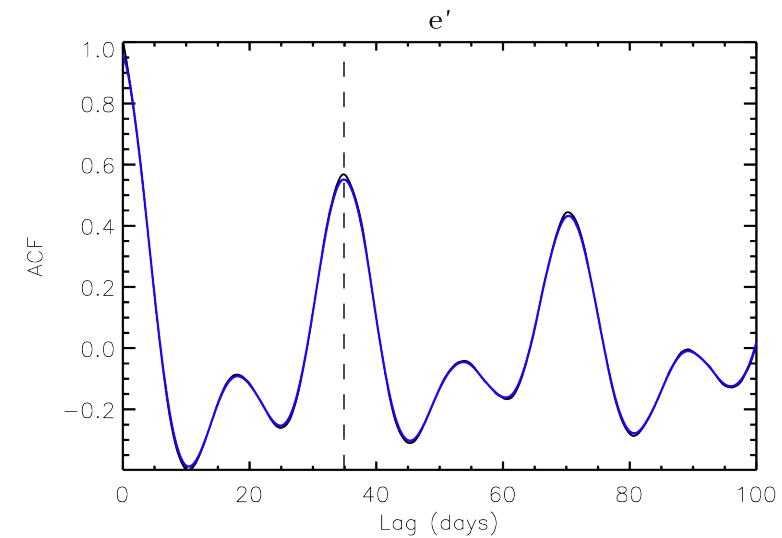
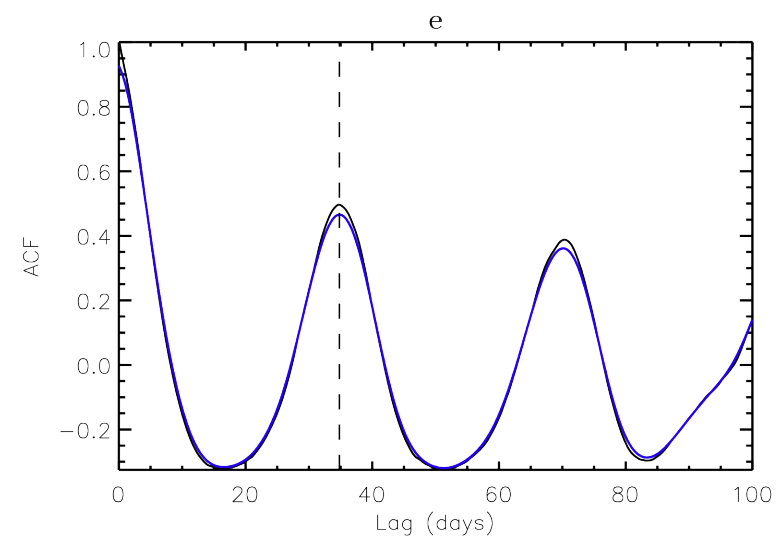
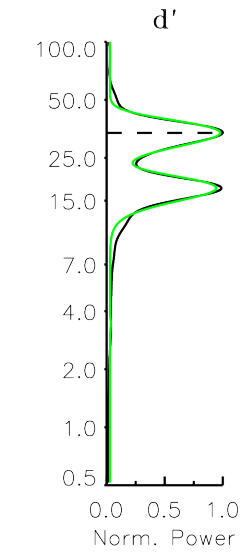
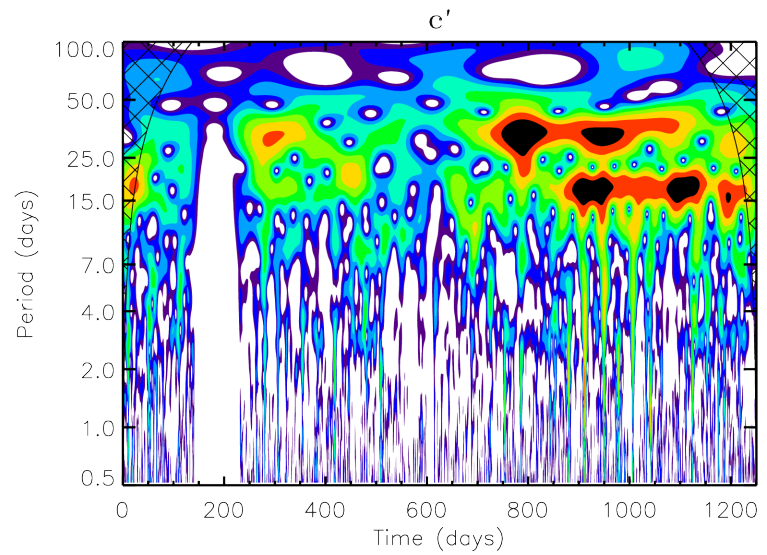
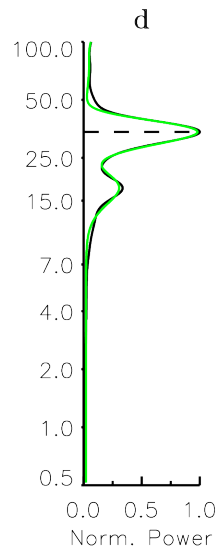
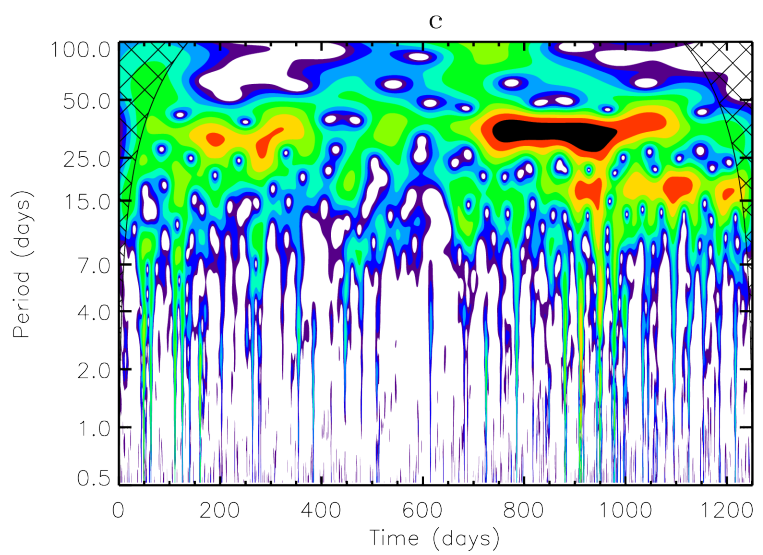
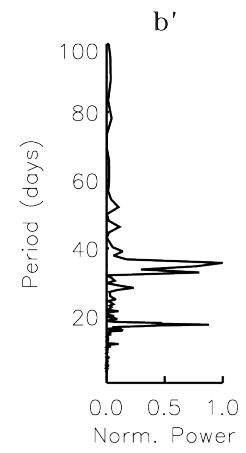
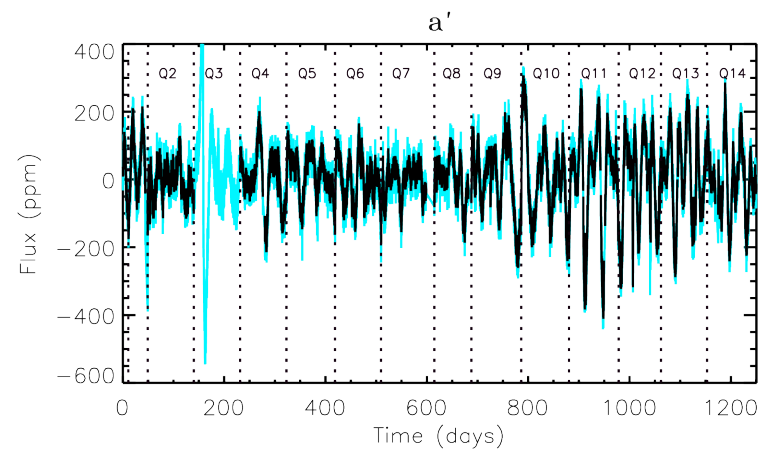
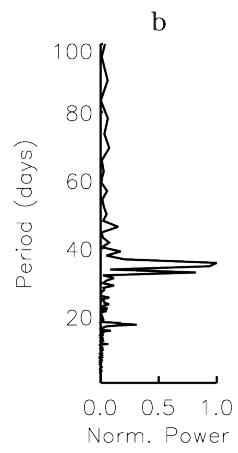
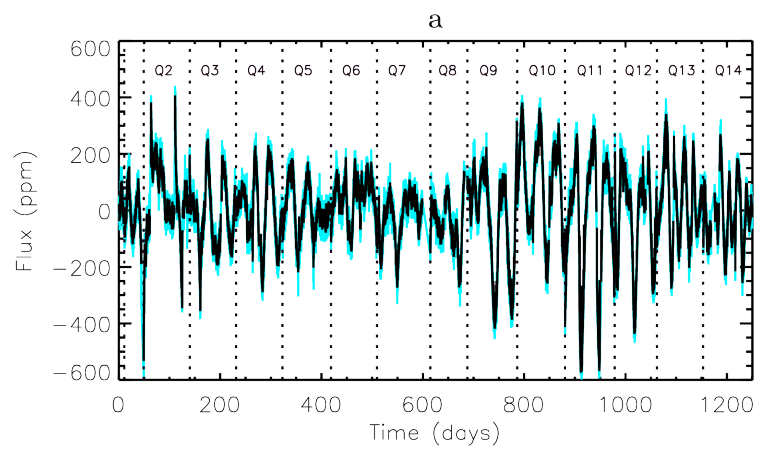
KIC 6116048



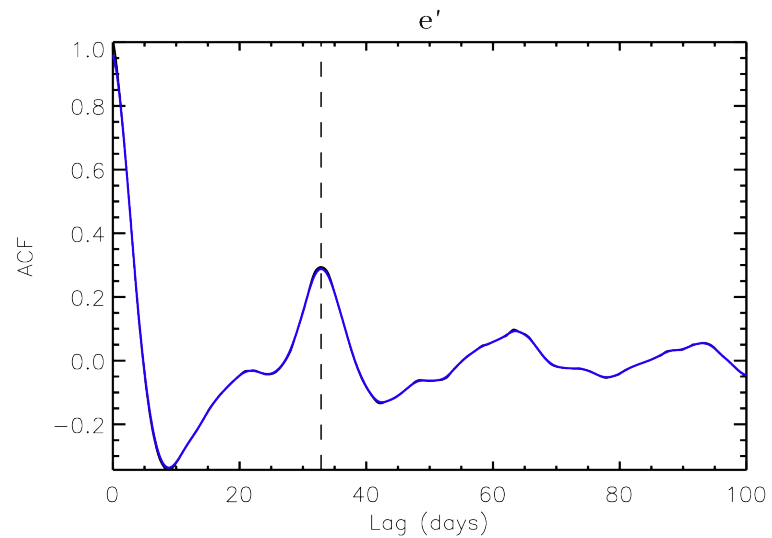
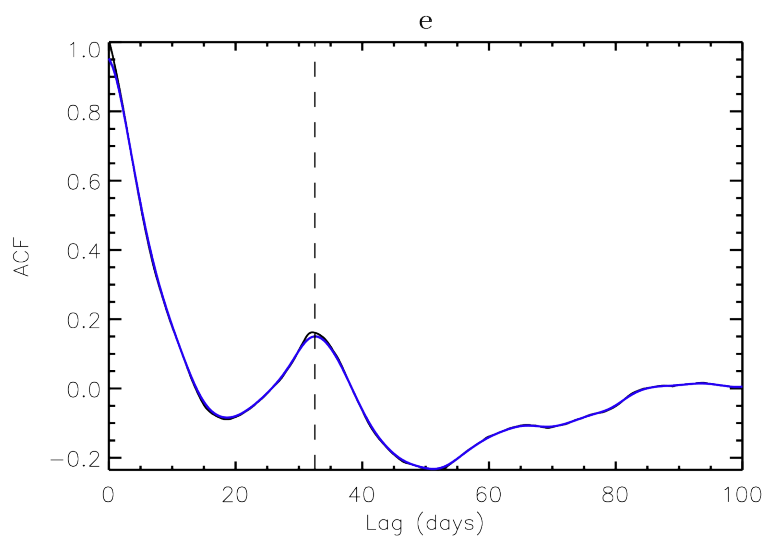
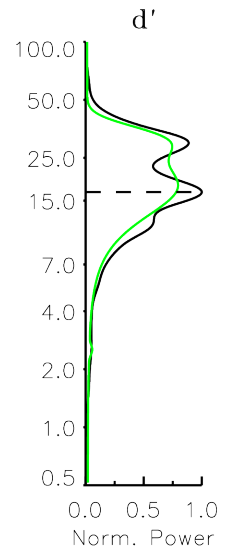
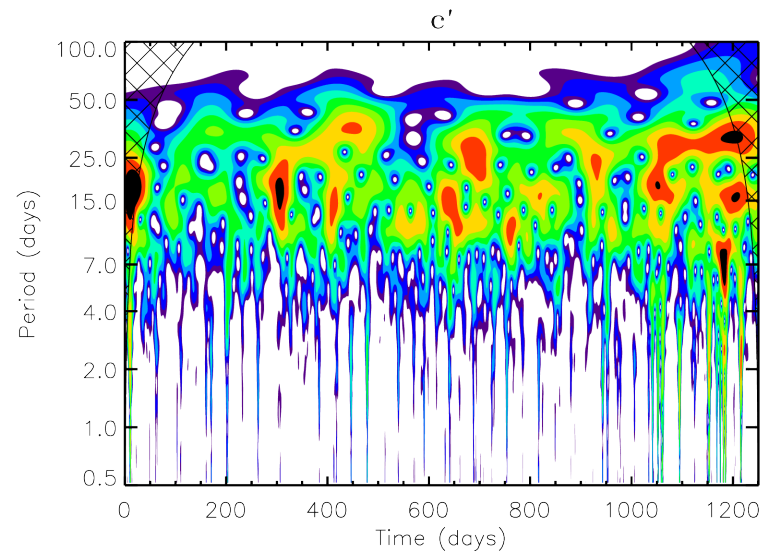
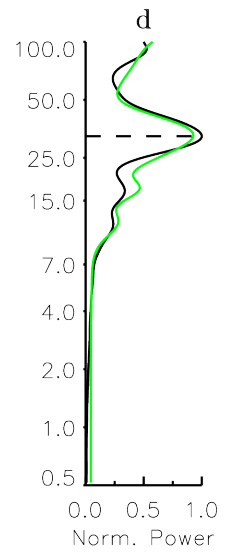
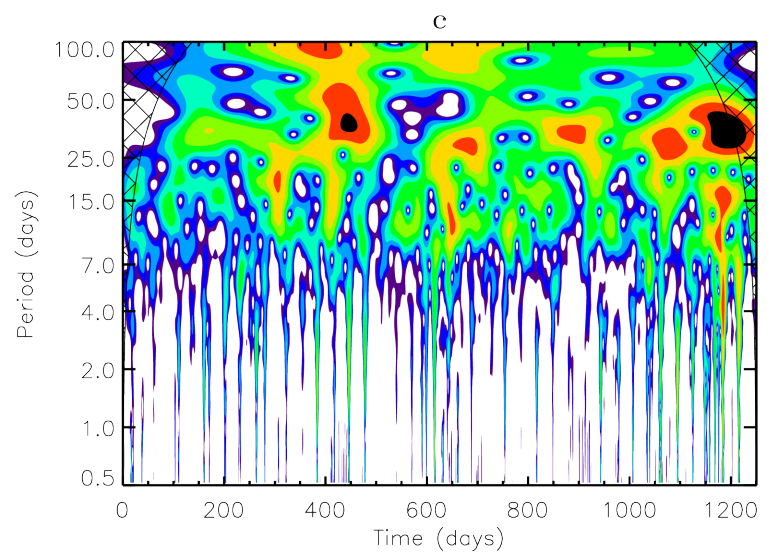
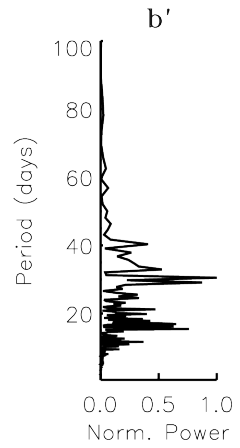
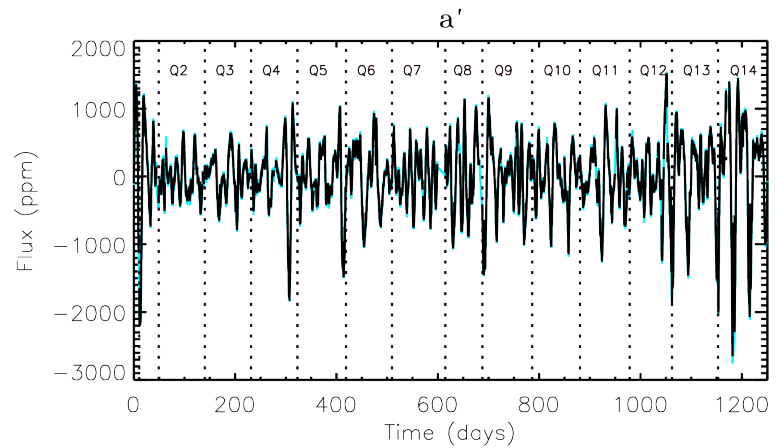
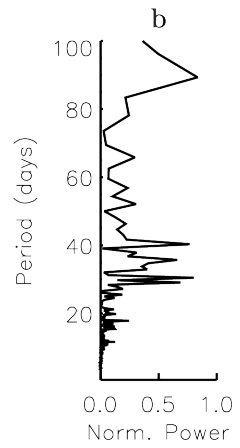
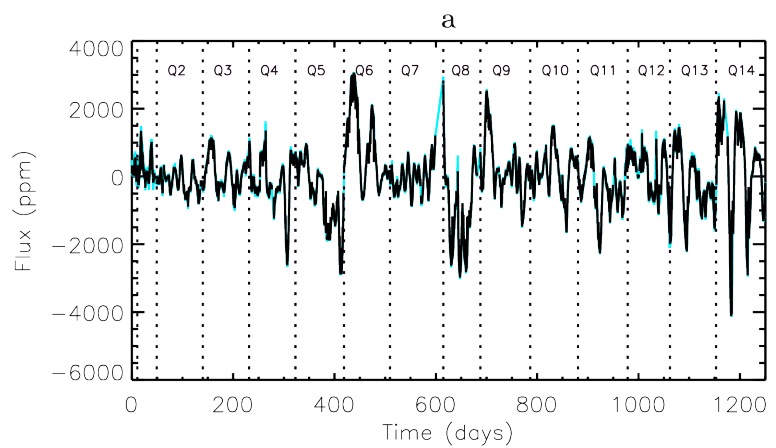
KIC 7680114



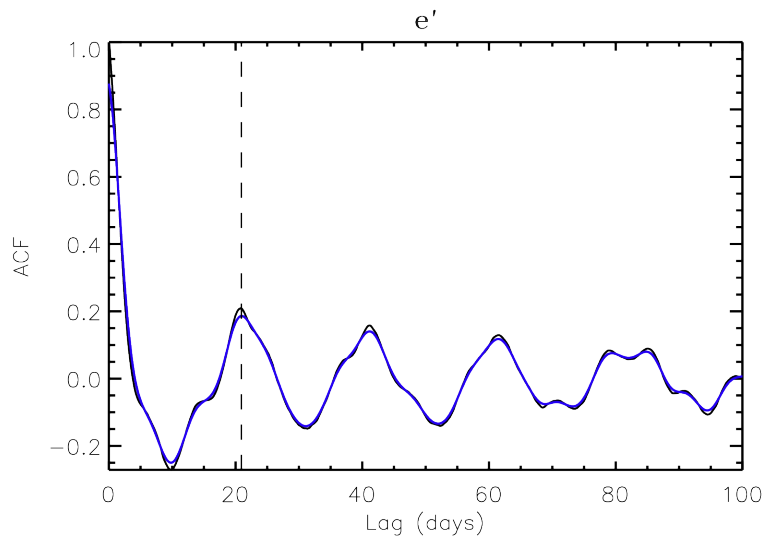
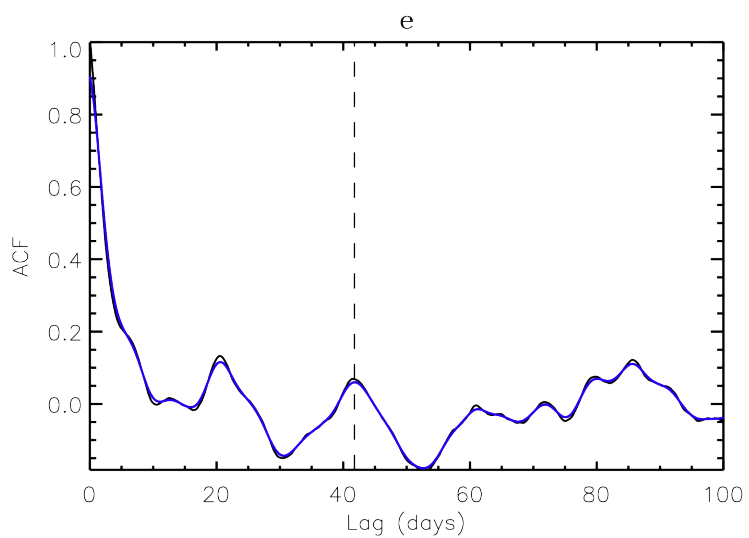
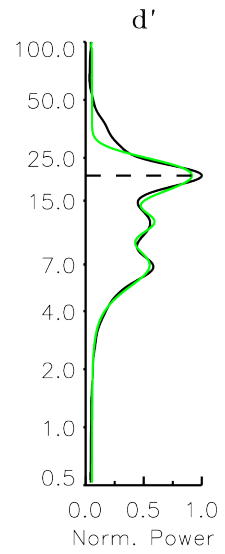
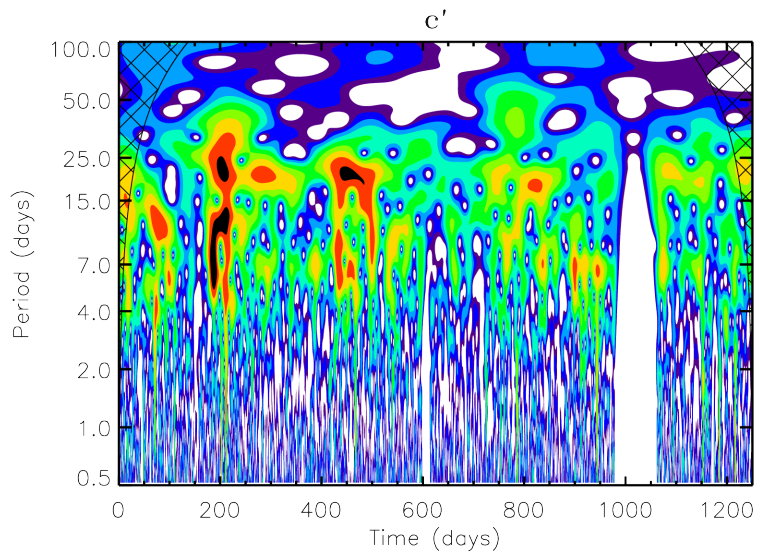
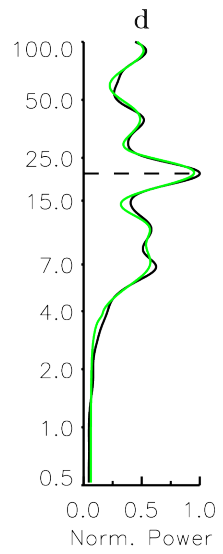
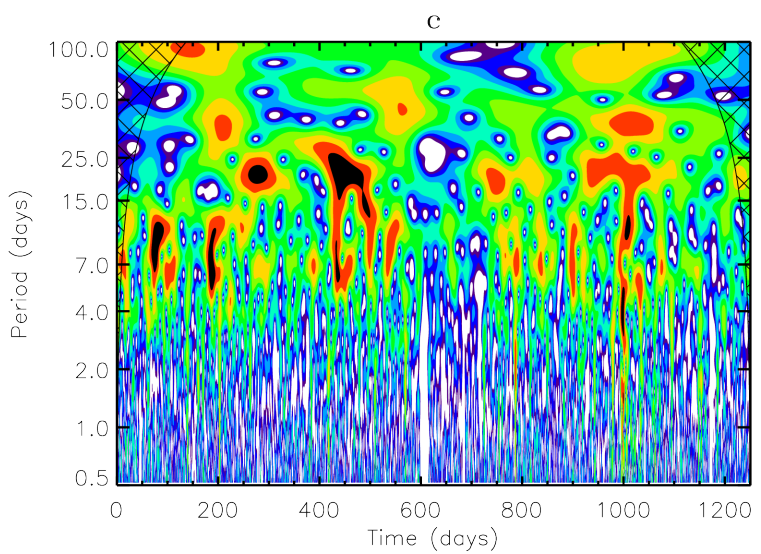
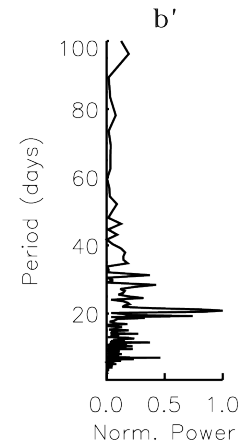
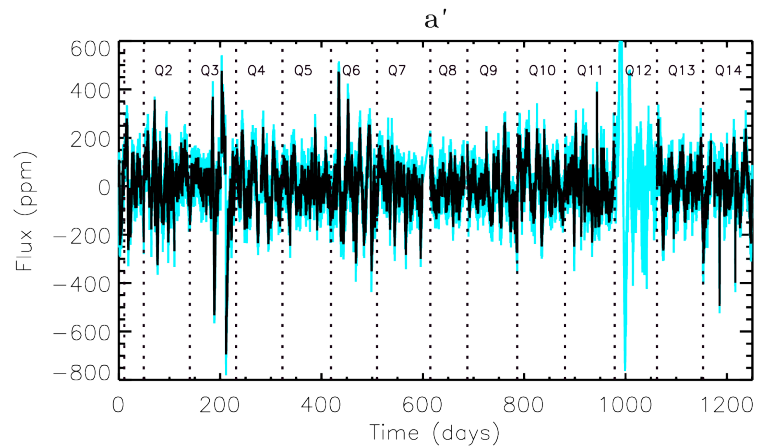
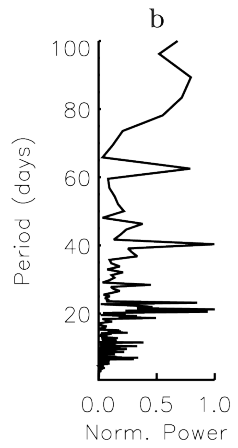
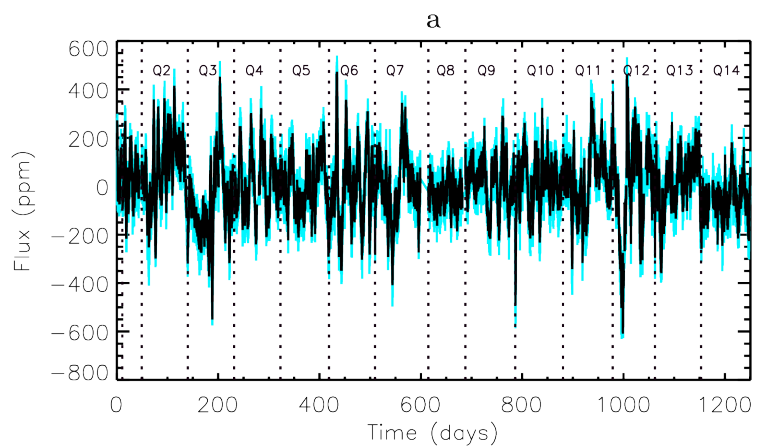
KIC 7871531



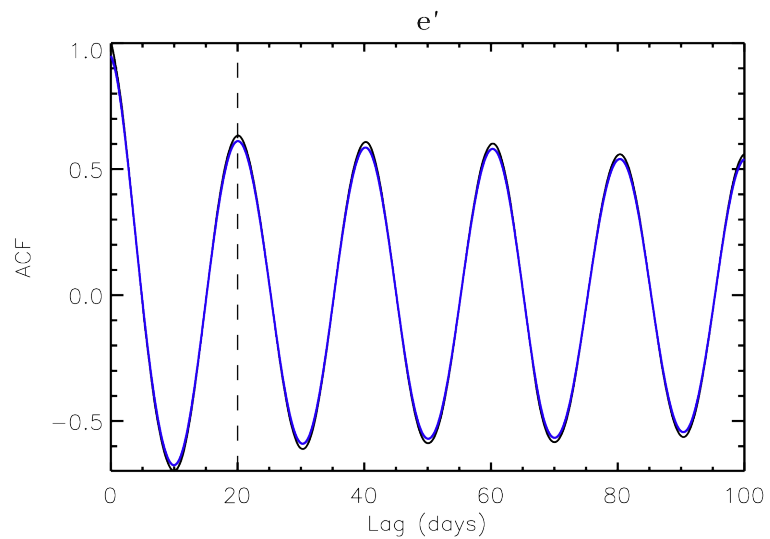
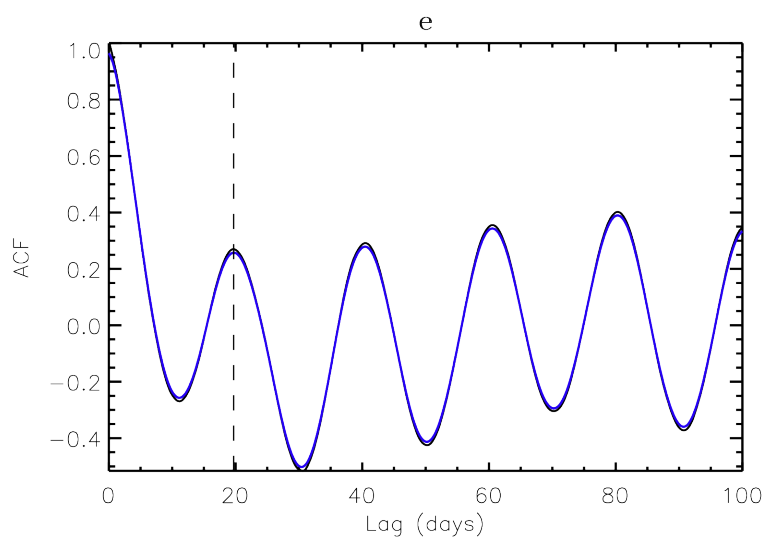
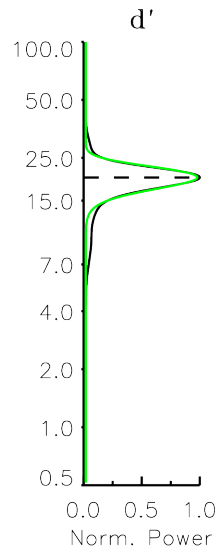
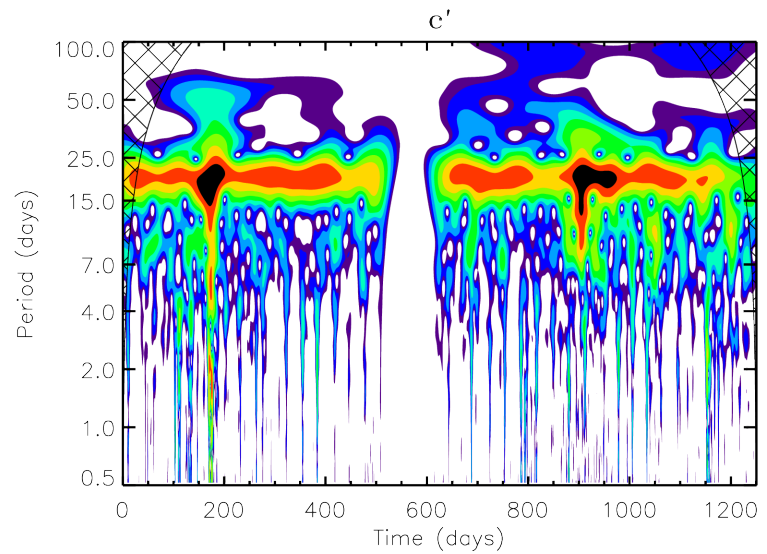
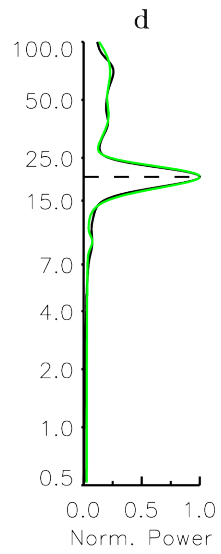
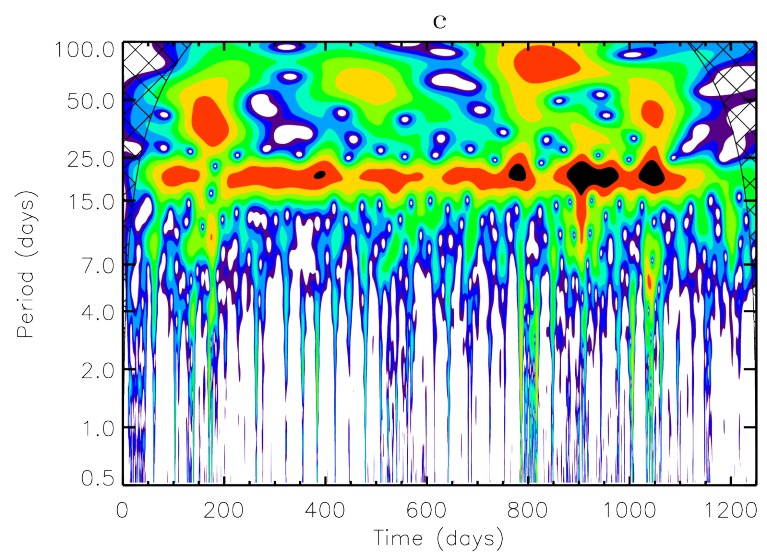
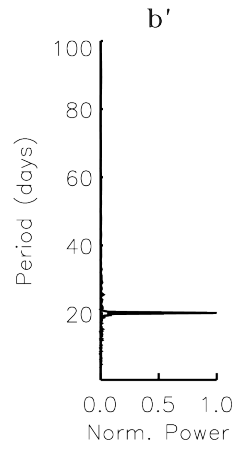
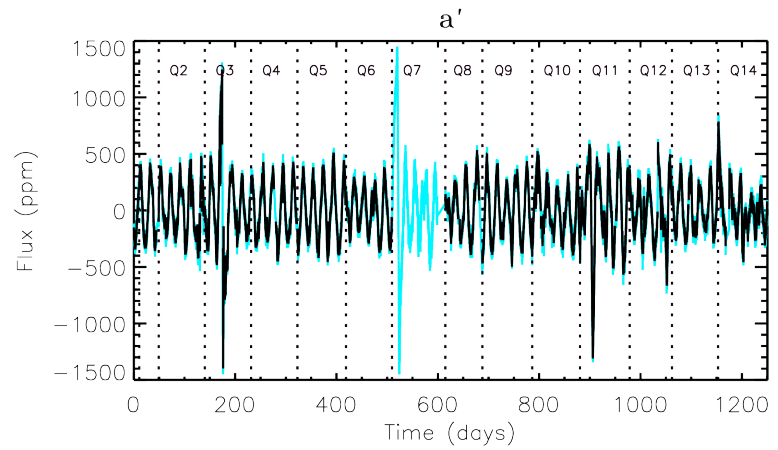
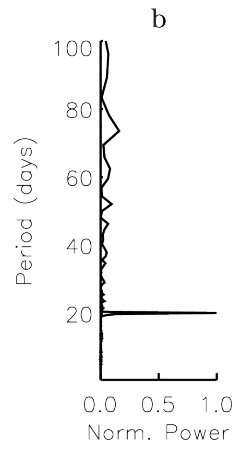
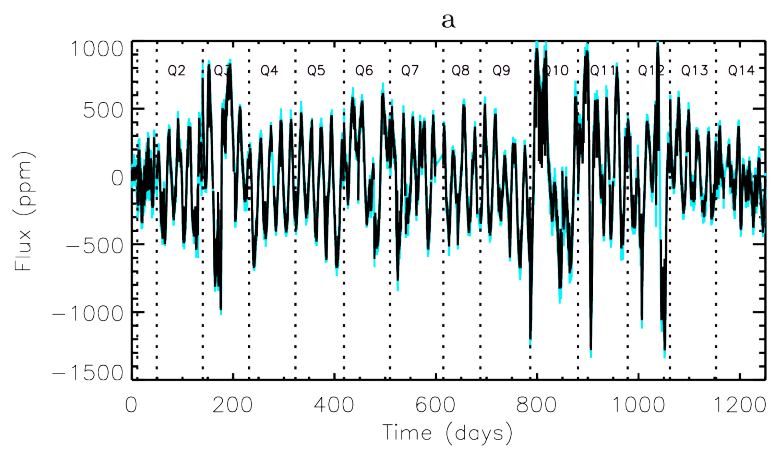
KIC 8006161



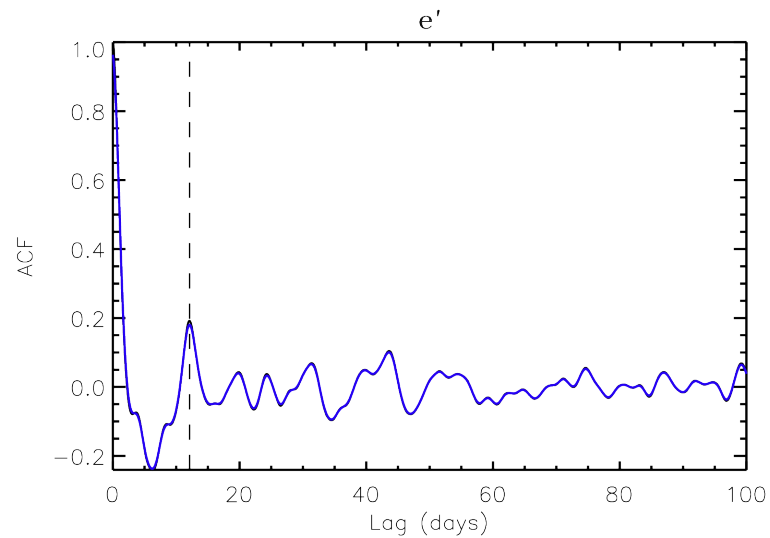
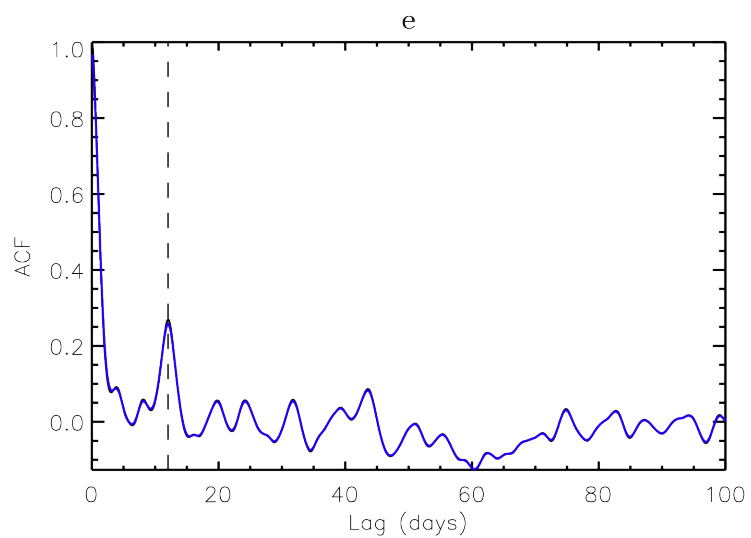
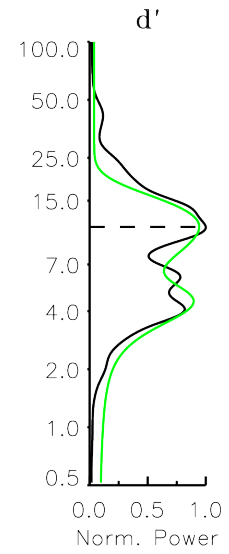
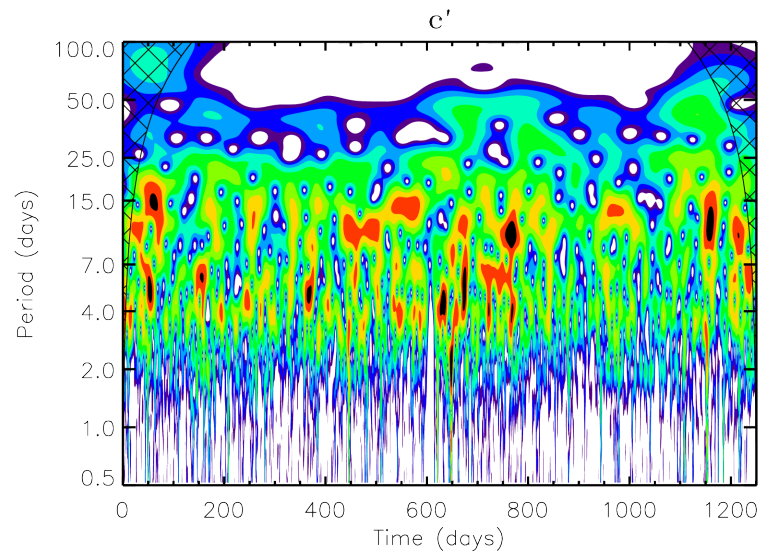
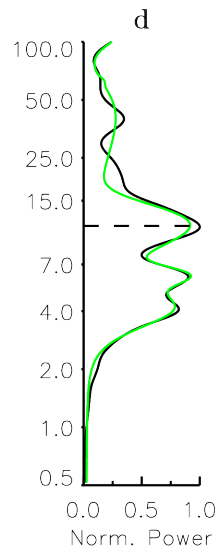
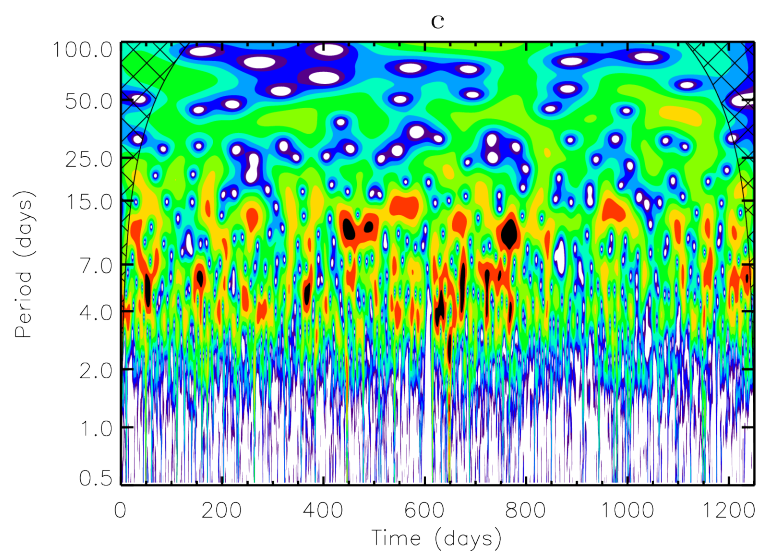
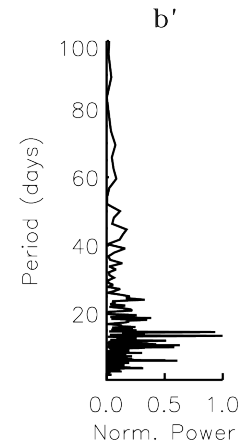
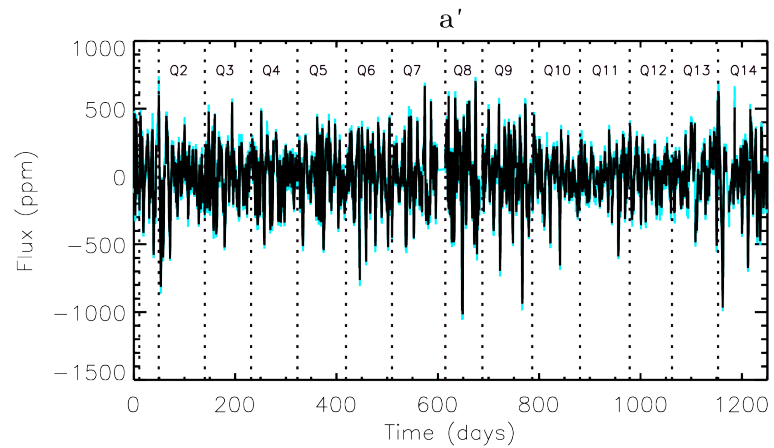
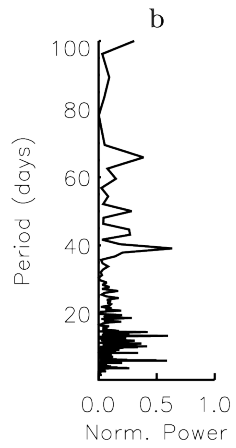
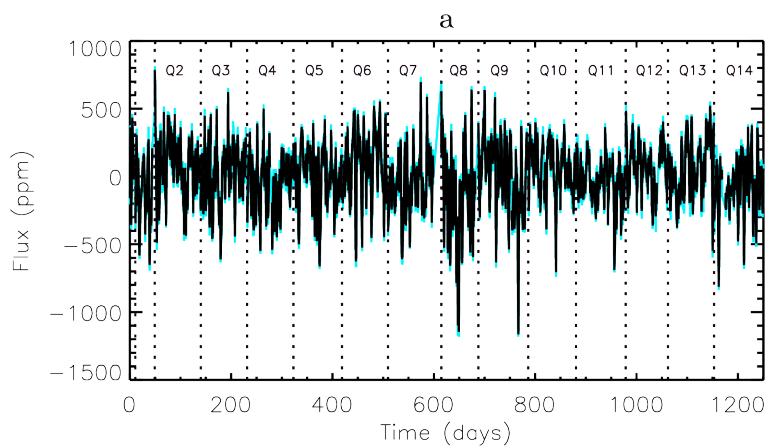
KIC 8228742



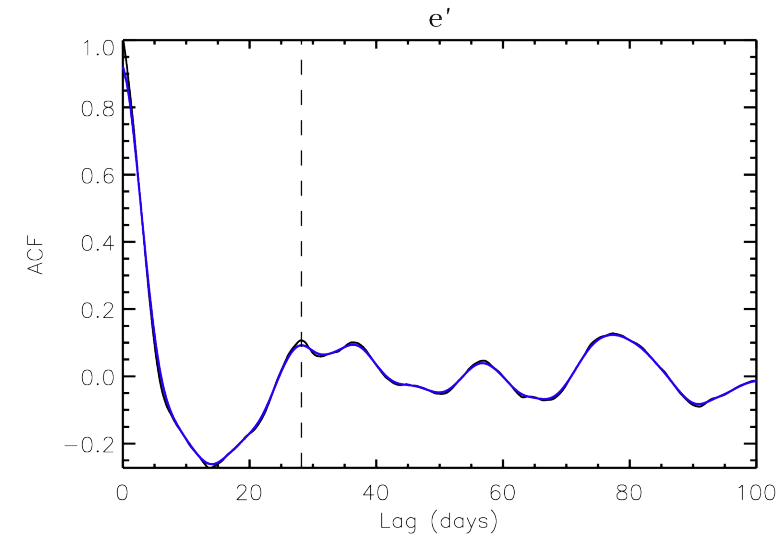
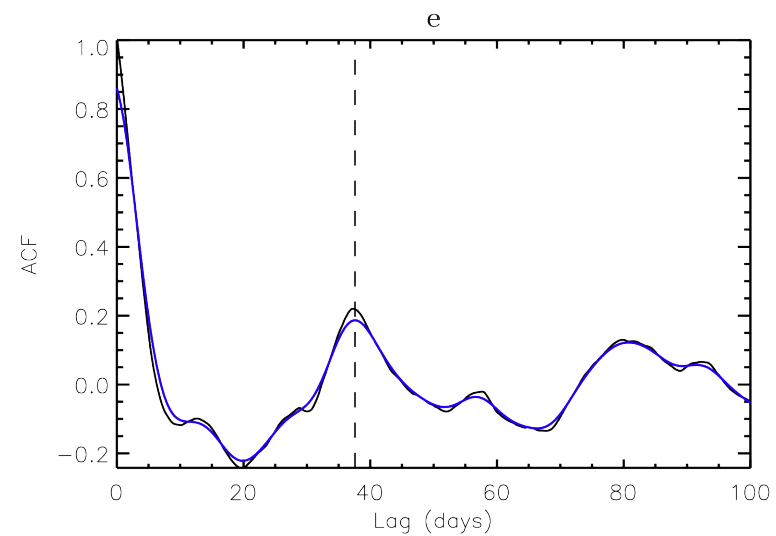
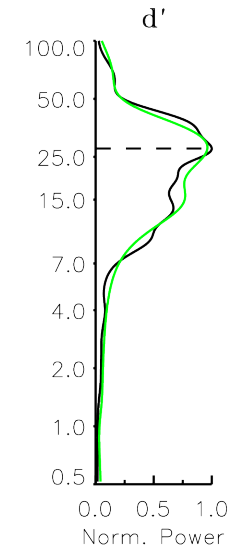
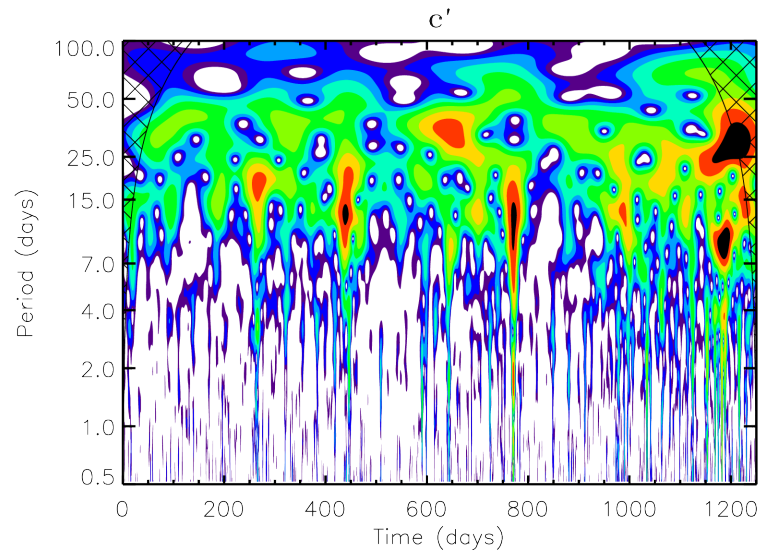
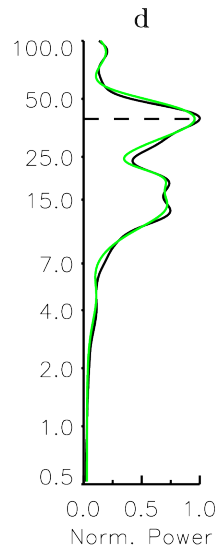
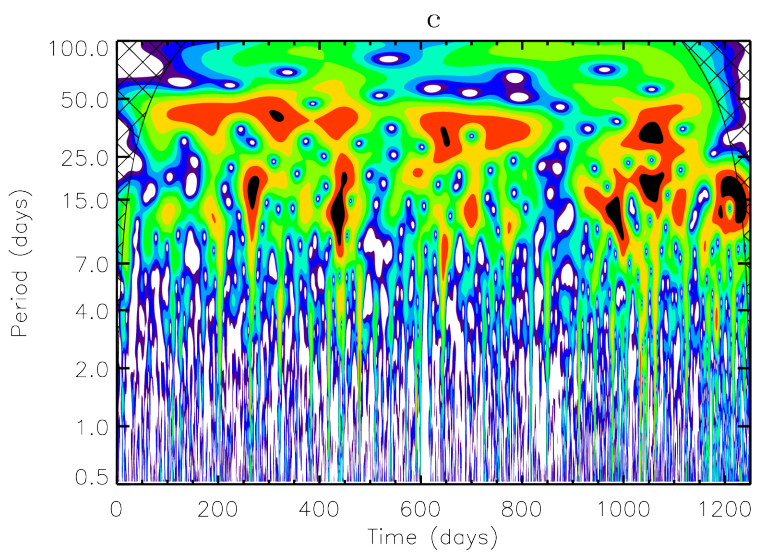
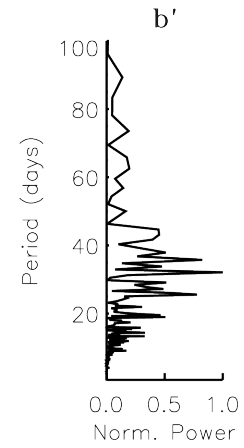
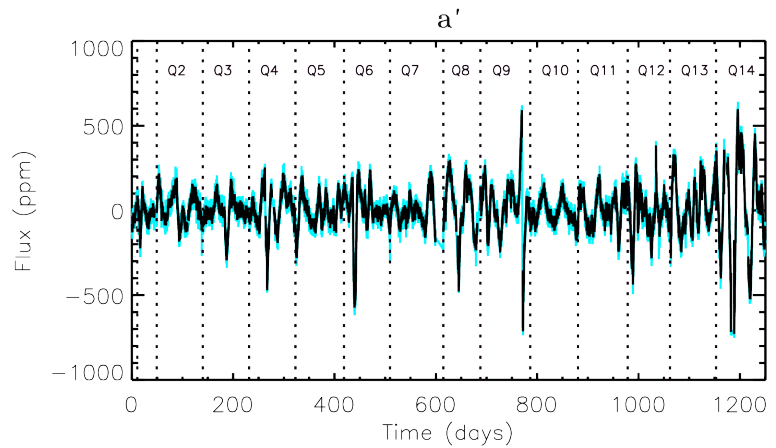
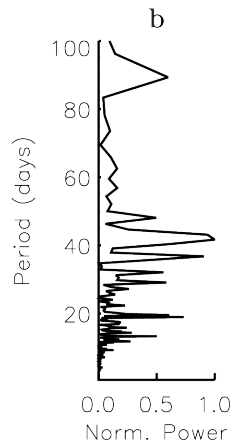
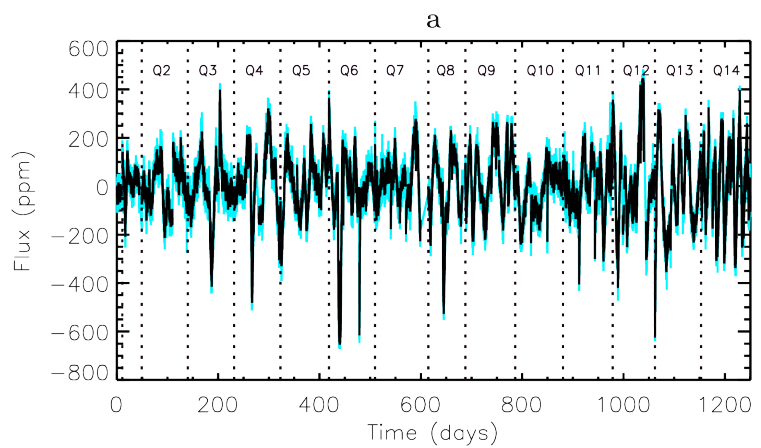
KIC 9098294



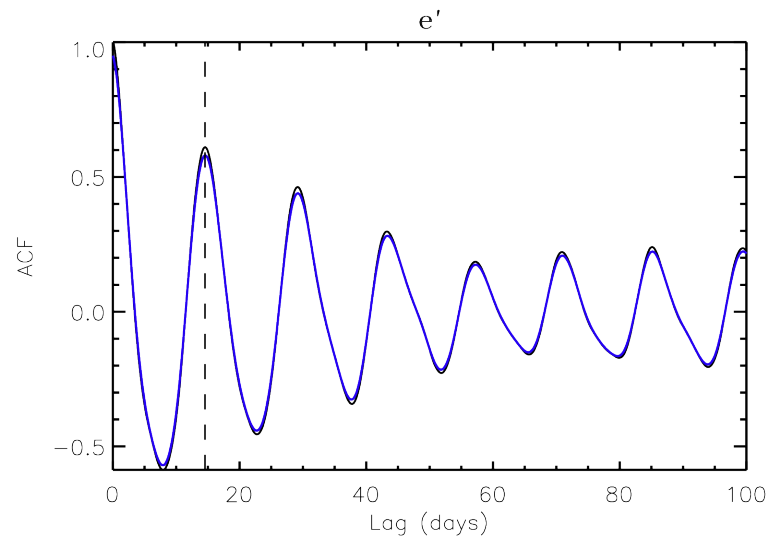
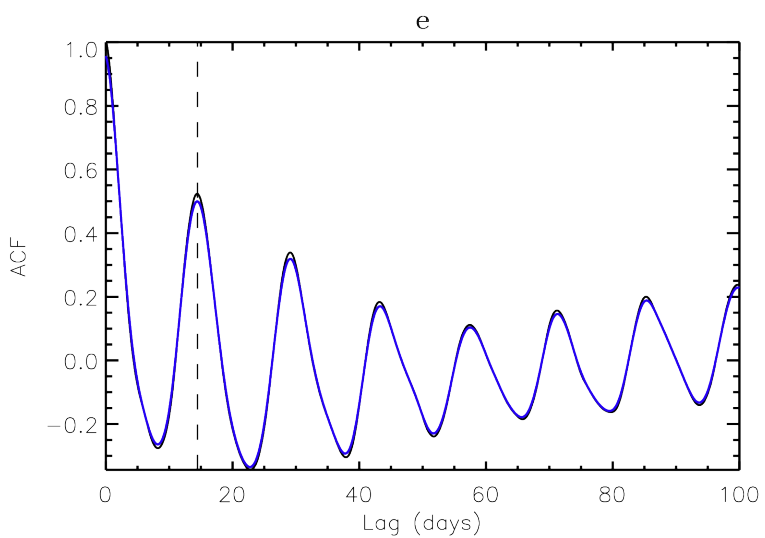
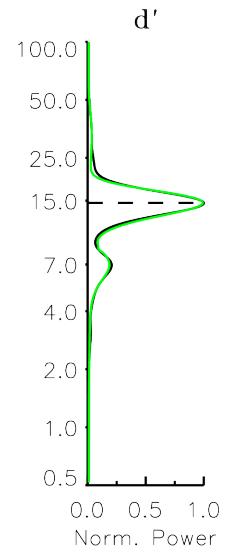
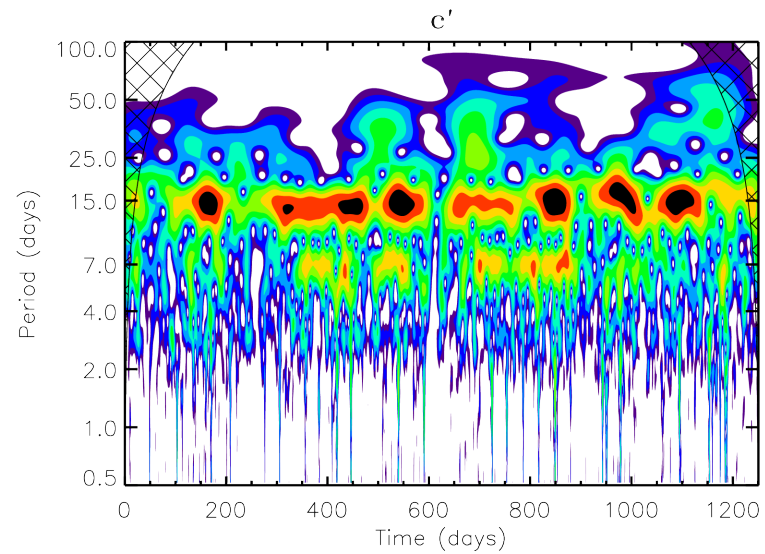
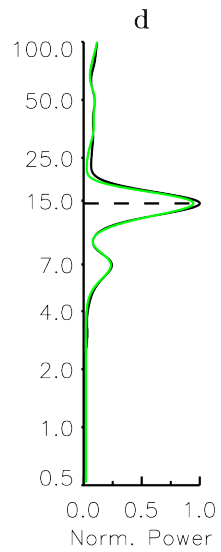
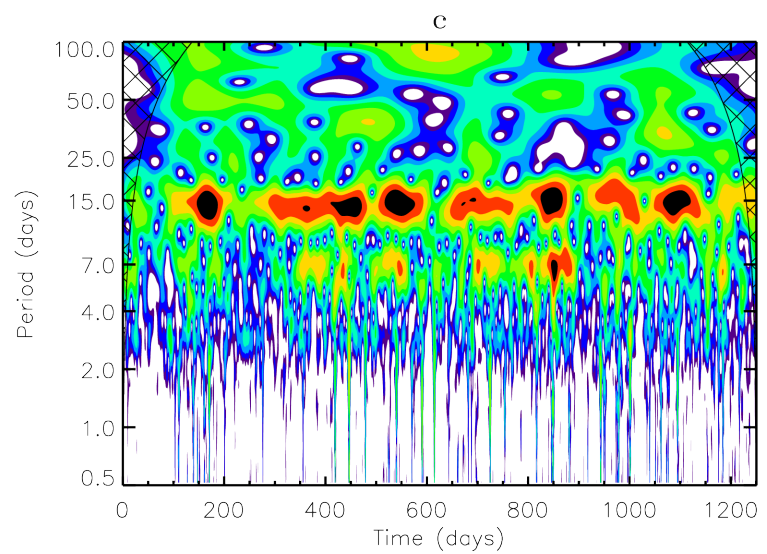
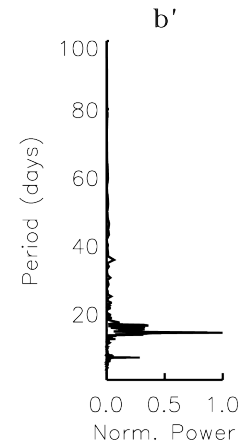
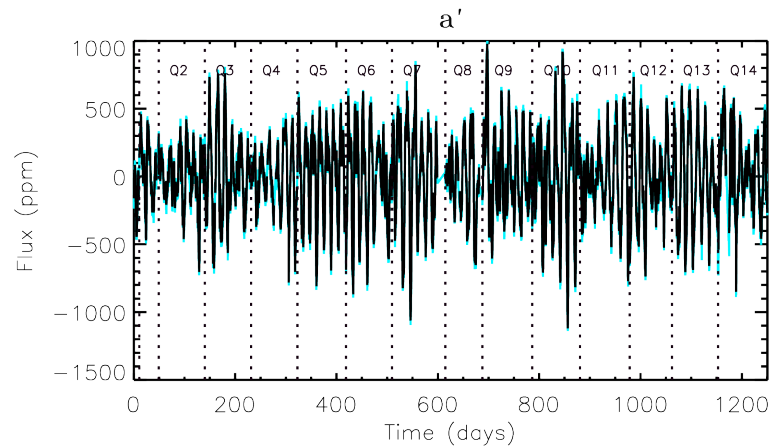
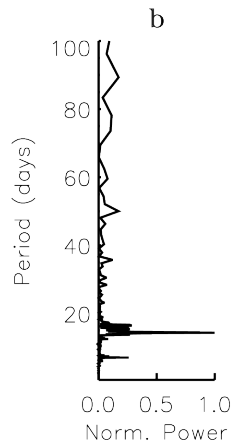
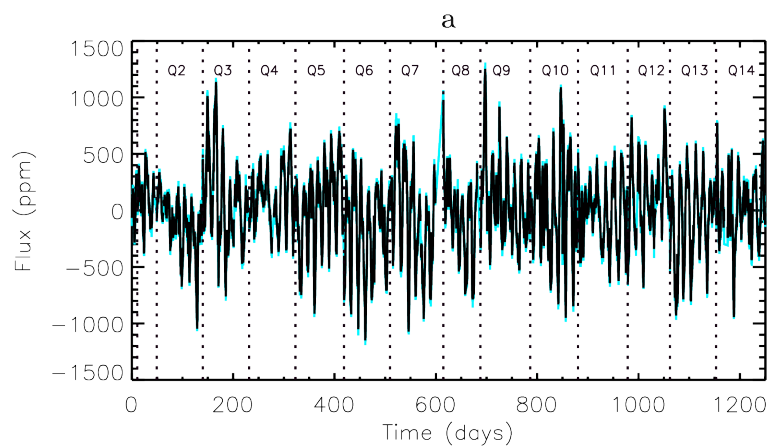
KIC 9139151



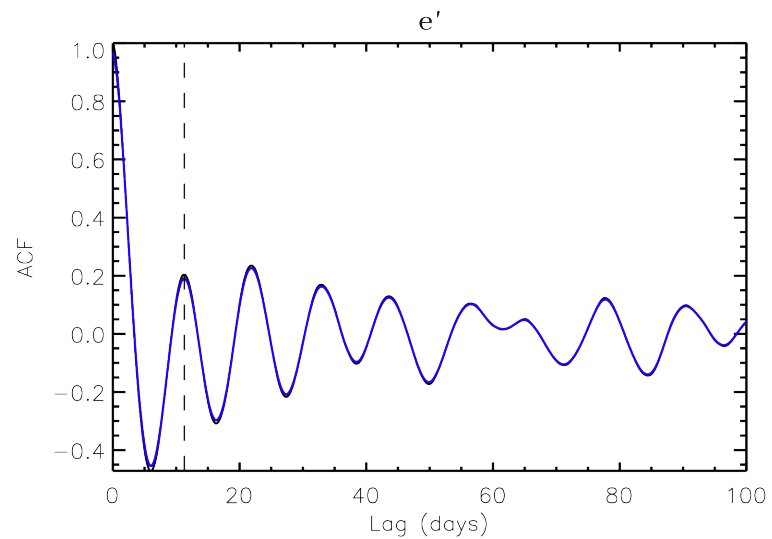
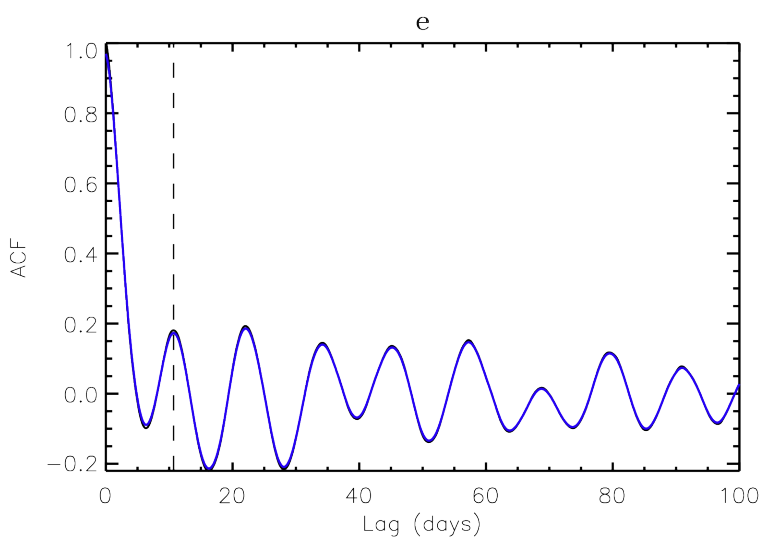
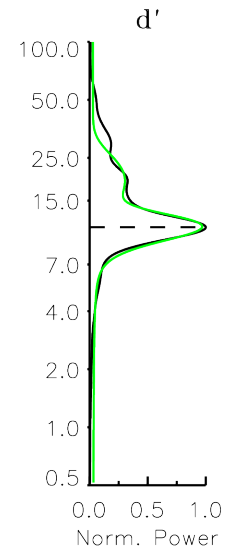
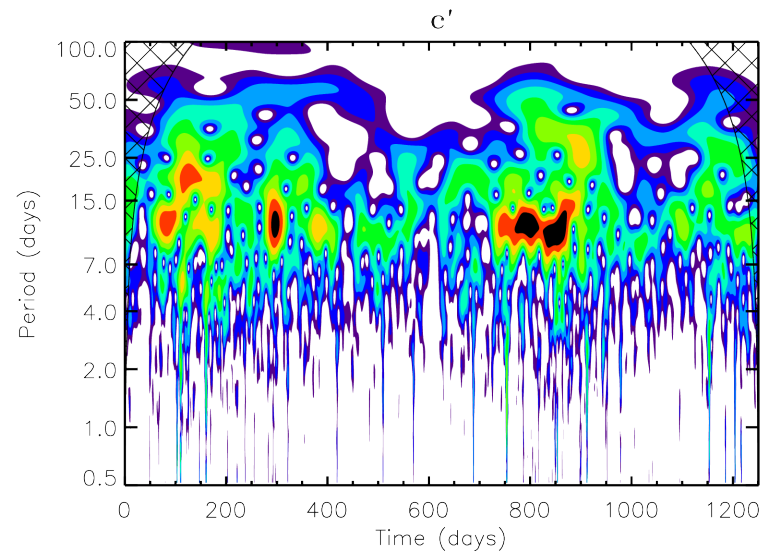
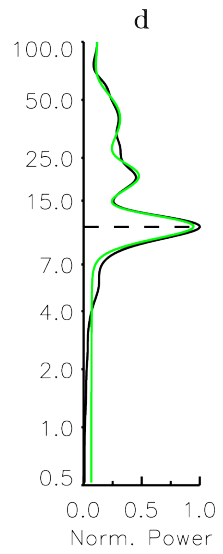
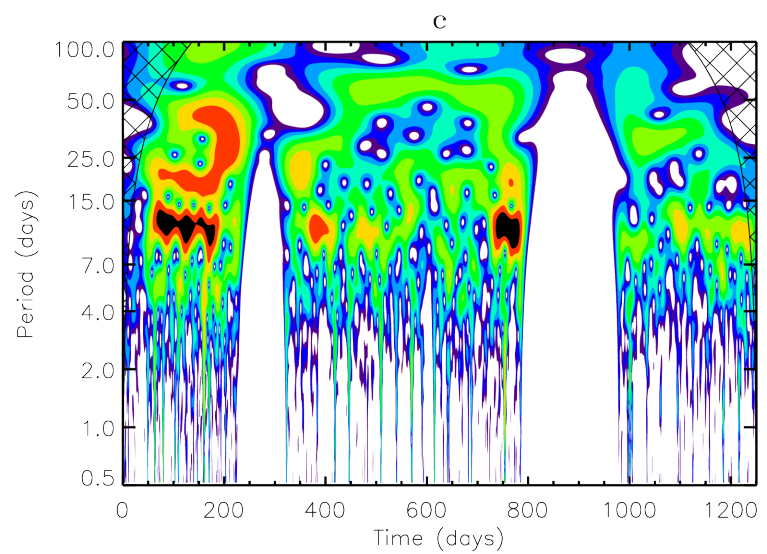
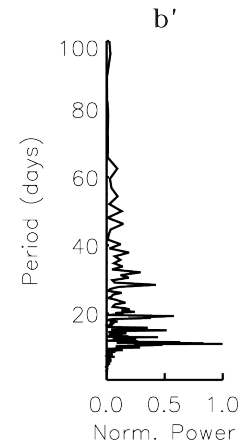
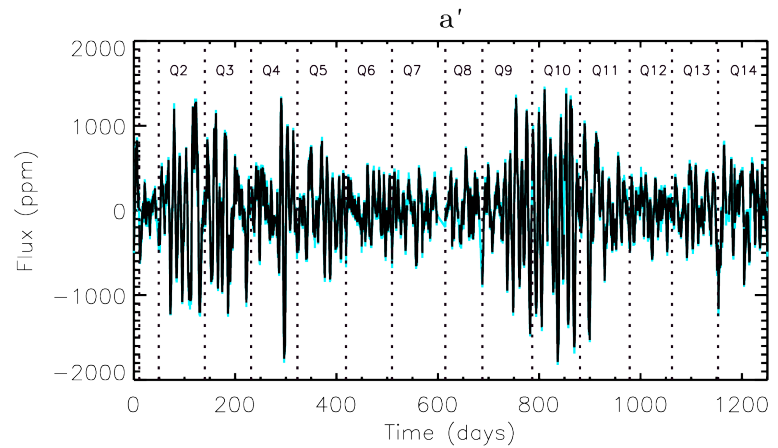
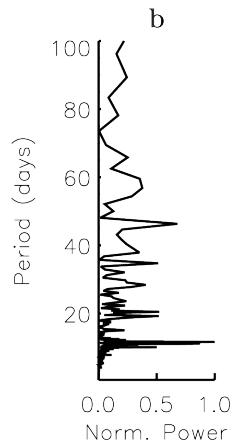
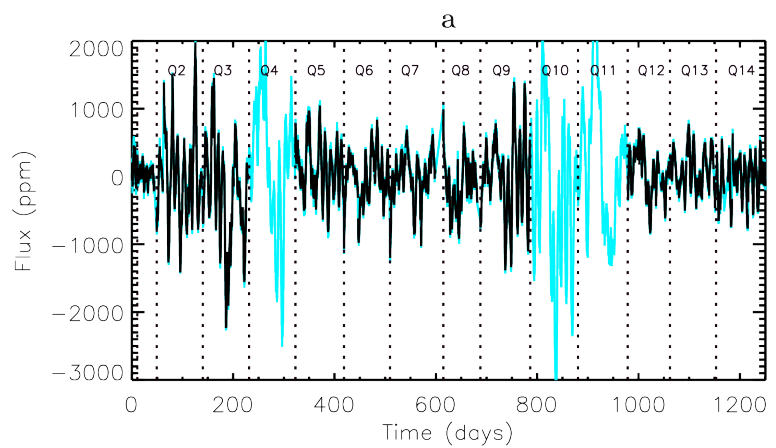
KIC 9955598



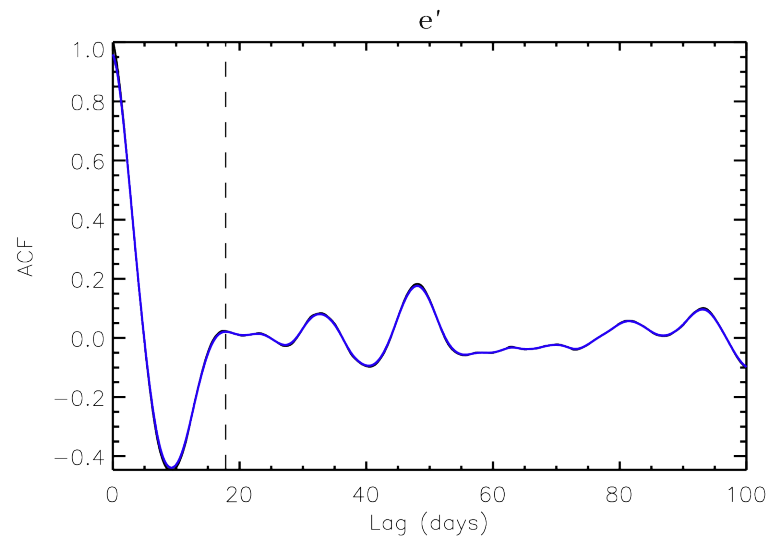
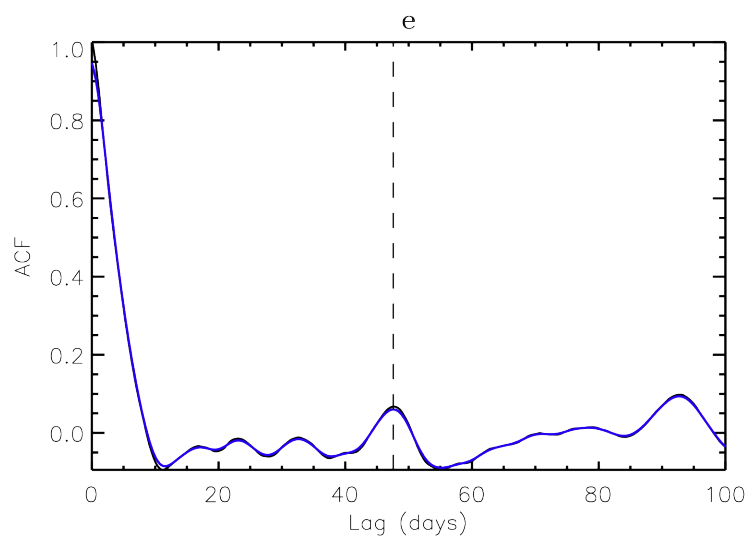
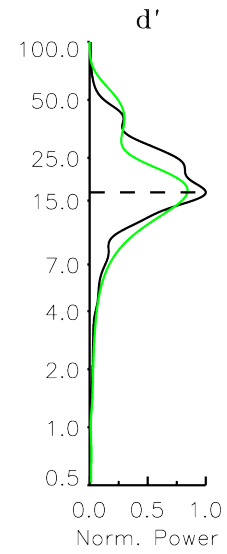
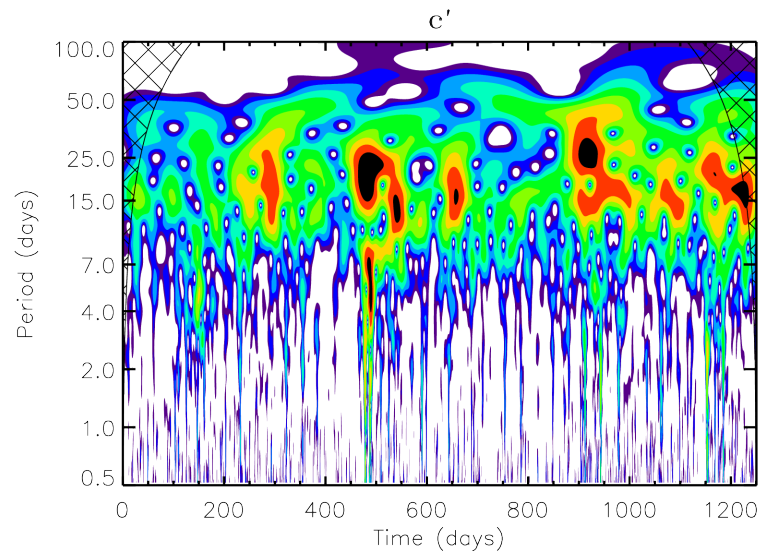
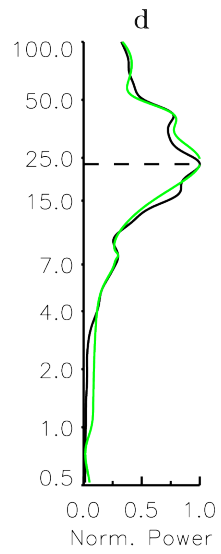
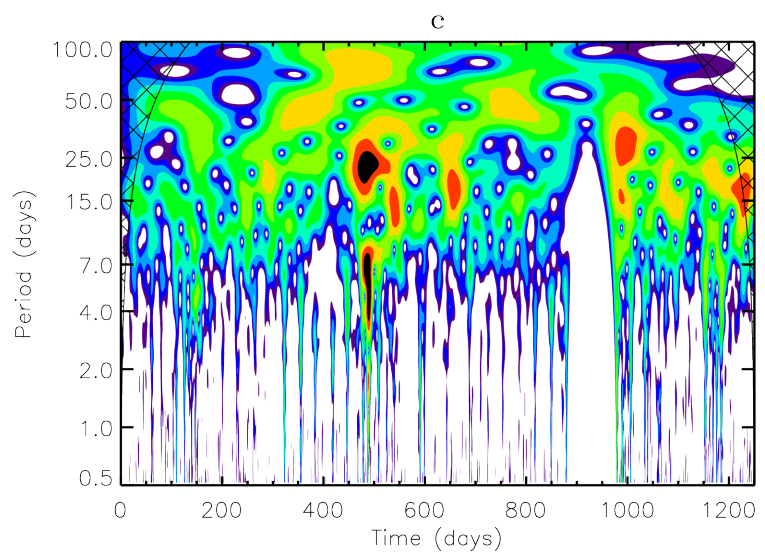
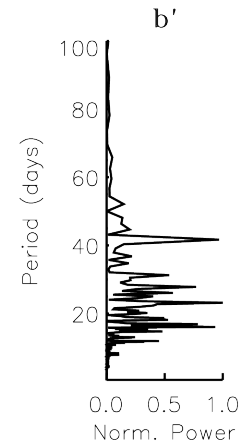
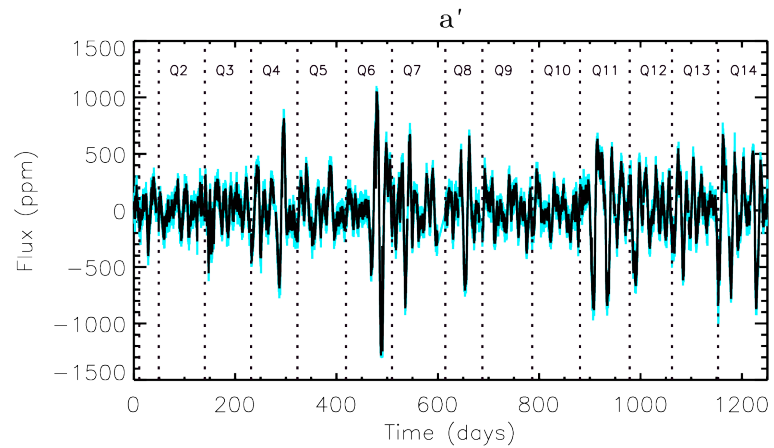
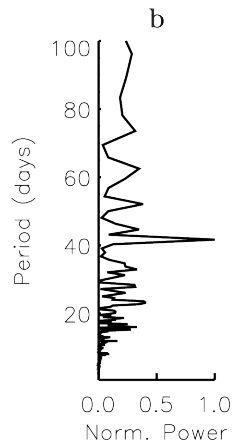
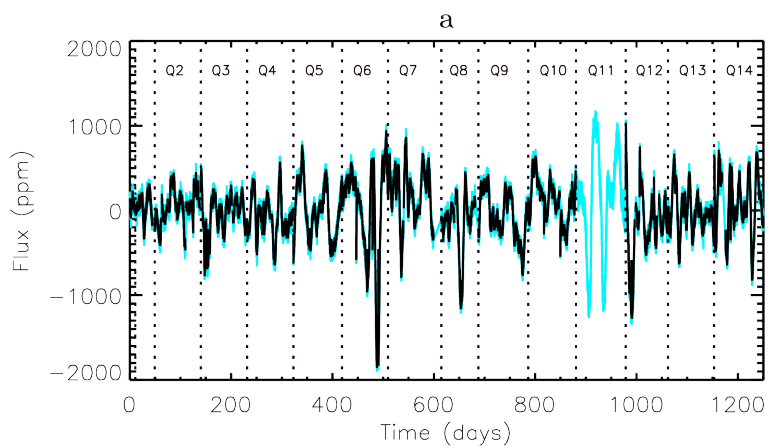
KIC 10454113



KIC 10644253



KIC 11244118



KIC 12258514

